

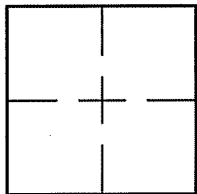
CORNER RECORD

Document Number A.P. 023-013-34

City of GREENBRAE

County of MARIN, California

Brief Legal Description LANDS OF HITCHCOCK PER 2006 M 108



CORNER TYPE **COORDINATES (Optional)**

Government Corner Control
Meander Property
Rancho Other
Date of Survey 12/16/09

N. _____
E. _____
Zone _____ NAD27 NAD83
NAD83 Epoch _____
Elev. _____
Vert. Datum: NGVD29 NAVD88
Meas. Units: Metric Imperial

Corner- Left as found Found and tagged Established Reestablished Rebuilt

Identification and type of corner found: Evidence used to identify or procedure used to establish or reestablish the corner:
ESTABLISHED LANDS OF HITCHCOCK USING FOUND 2" PIPES DESCRIBED AS MONUMENTS 3 AND 4 PER
2 O.S. 93 AND 2006 M 108 AND AS SHOWN ON SHEET 2.

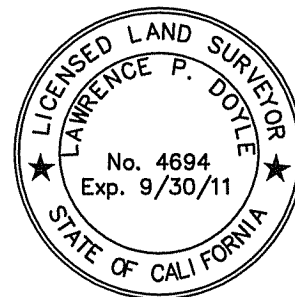
A description of the physical condition of the monument as found and as set or reset: SEE SHEET 2.

SURVEYOR'S STATEMENT

This Corner Record was prepared by me or under my direction in conformance with

the Land Surveyor's Act on APRIL 2, 2010

Signed Lawrence P Doyle P.L.S. or R.C.E. No. P.L.S. 4694



COUNTY SURVEYOR'S STATEMENT

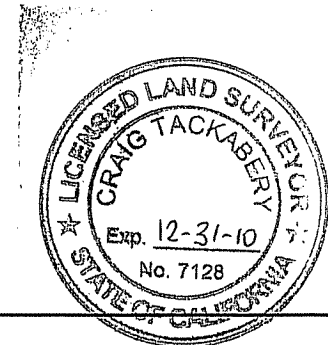
This Corner Record was received APRIL 1, 2010

and examined and filed APRIL 19, 2010

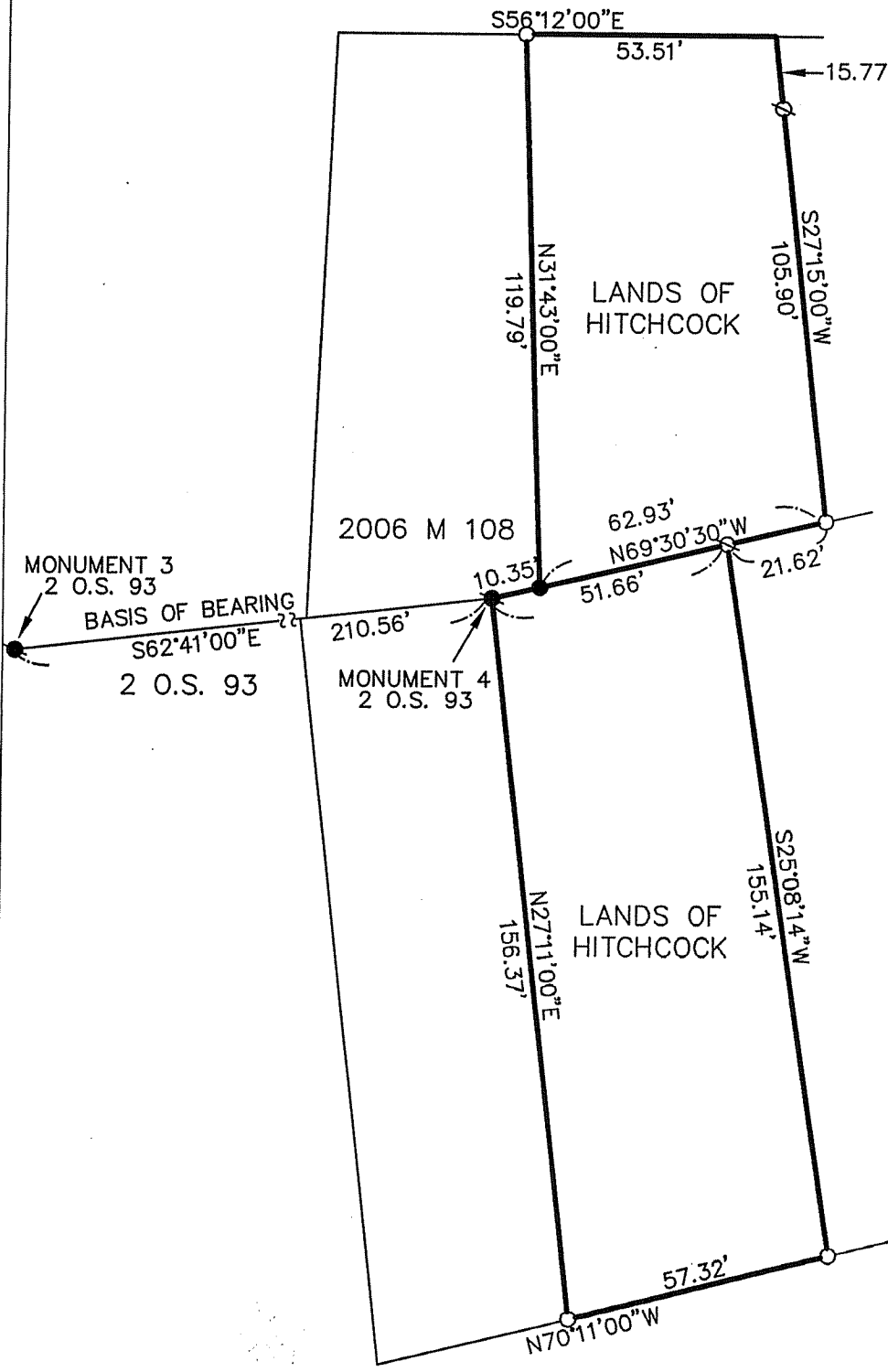
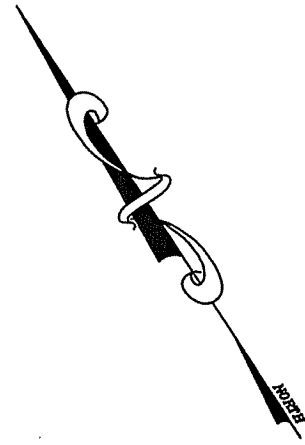
Signed [Signature] P.L.S. or R.C.E. No. 7128

Title COUNTY SURVEYOR

County Surveyor's Comment _____



CORTE MADERA CREEK

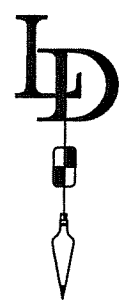


LEGEND

- ⊗ SET NAIL/TAG L.S. 4694 IN WOOD DECK
- SET PIPE/PLUG L.S. 4694
- FOUND PIPE/PLUG L.S. 4694 PER 2006 M 108
- FOUND 2" PIPE PER 2 O.S. 93

BASIS OF BEARING

THE BASIS OF BEARING IS N62°41'00"W BETWEEN MONUMENT 3 & MONUMENT 4 2" IRON PIPES RE 3230 PER 2 O.S. 93



| | | | |
|---|--------------------------|------------|--------------|
| CORNER RECORD | | | |
| 2006 M 108 | | | |
| GREENBRAE | MARIN COUNTY | CALIFORNIA | |
| SCALE: 1"=40' | DRAWN BY: | | |
| DATE: 12/16/09 | LAWRENCE P. DOYLE | | SHEET 2 OF 2 |
| LAND SURVEYOR/CIVIL ENGINEER | | | |
| 100 HELENS LANE MILL VALLEY CA 94941 (415-388-9585) | | | |
| DRAWING NO. | | | 1950 |