

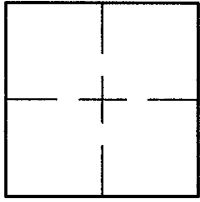
CORNER RECORD

Document Number A.P. 22-490

City of GREENBRAE

County of MARIN, California

Brief Legal Description 16 R.M. 17



CORNER TYPE

COORDINATES (Optional)

Government Corner Control

Meander Property

Rancho Other

Date of Survey 7/9/13

N. _____
 E. _____
 Zone _____ NAD27 NAD83
 NAD83 Epoch _____
 Elev. _____
 Vert. Datum: NGVD29 NAVD88
 Meas. Units: Metric Imperial

Corner- Left as found Found and tagged Established Reestablished Rebuilt

Identification and type of corner found: Evidence used to identify or procedure used to establish or reestablish the corner:

REESTABLISHED THE WESTERLY LINE OF 16 R.M. 17 USING STREET MONUMENTS ON VIA CASITAS AND ON S. ELISEO DRIVE PER 13 R.M. 46 AND 14 R.M. 56 AND AS SHOWN ON SHEET 2.

A description of the physical condition of the monument as found and as set or reset: SEE SHEET 2.

SURVEYOR'S STATEMENT

This Corner Record was prepared by me or under my direction in conformance with

the Land Surveyor's Act on JULY 10, 2013

Signed Lawrence P Doyle P.L.S. or R.C.E. No. P.L.S. 4694



COUNTY SURVEYOR'S STATEMENT

This Corner Record was received JULY 15, 2013

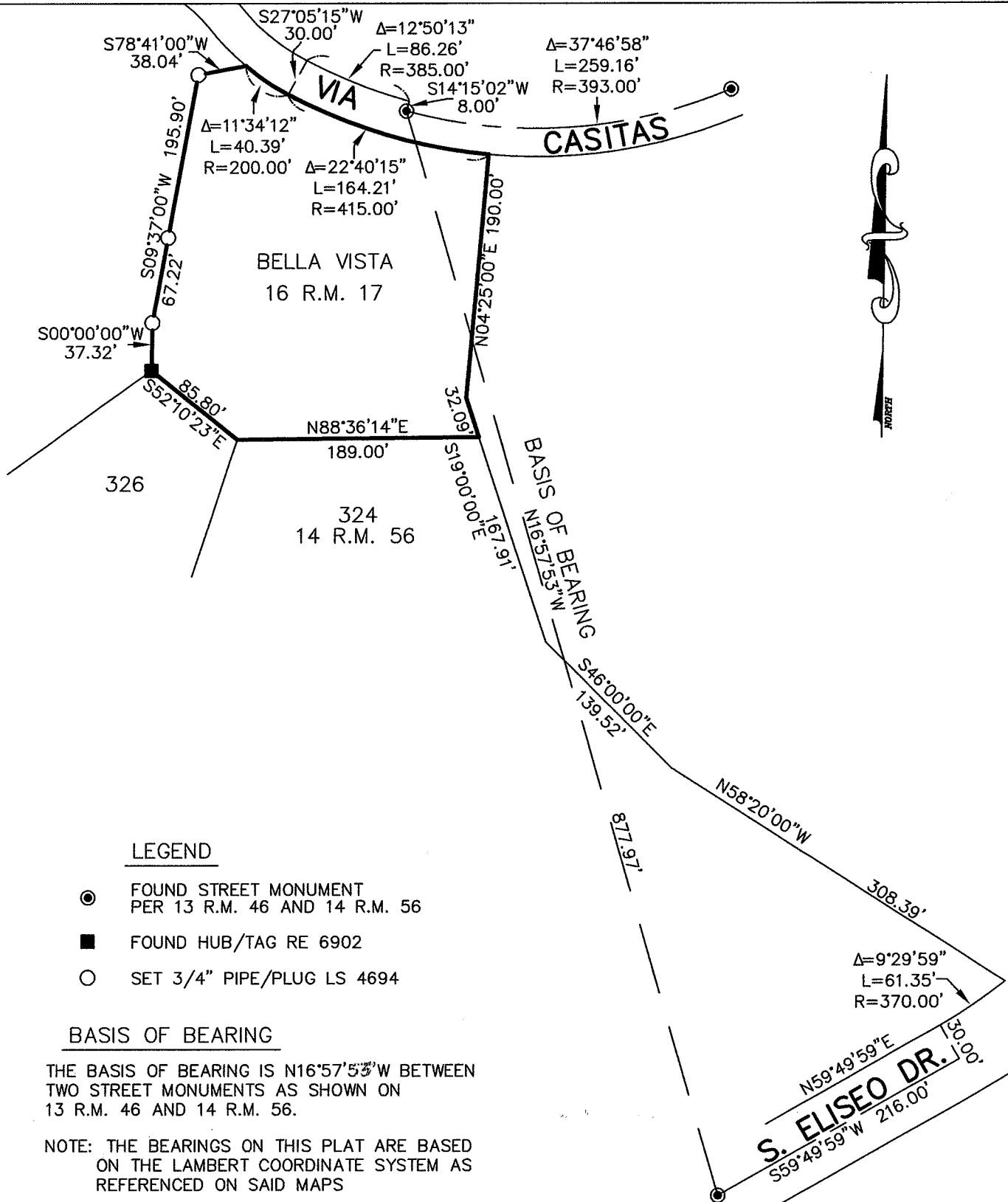
and examined and filed AUGUST 23, 2013

Signed Richard G. Simonitch P.L.S. or R.C.E. No. 7821

Title DEPUTY CO. SURVEYOR



County Surveyor's Comment _____



CORNER RECORD		
16 R.M. 17		
GREENBRAE	MARIN COUNTY	CALIFORNIA
SCALE: 1" = 110'	LAWRENCE P. DOYLE	DRAWN BY:
DATE: 7/9/13		SHEET 2 OF 2
LAND SURVEYOR/CIVIL ENGINEER		
100 HELENS LANE MILL VALLEY CA 94941 (415-388-9585)		
		DRAWING NO. 2393