

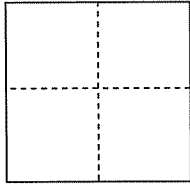
CORNER RECORD

Document Number _____

City of LARKSPUR

County of MARIN, California

Brief Legal Description CENTERLINE MONUMENT, SOUTH ELISIO DRIVE (1)



CORNER TYPE

Government Corner Control
 Meander Property
 Rancho Other

COORDINATES(Optional)

N. _____
 E. _____
 Zone _____ NAD27 NAD83
 NAD83 Epoch _____
 Elevation _____
 Vert. Datum: NADV88
 Meas. Units: Metric Imperial

Date of Survey AUGUST 3, 2010

Corner- Left as found Found and tagged Established Reestablished Rebuilt

Identification and type of corner found: Evidence used to identify or procedure used to establish or reestablish the corner:

Standard street monument @ centerline E.C. opposite Lot 312 (14 M 56). Monument was referenced with four cut "+"s, measured angle and distance, as well as angle and distance ties to adjoining monuments.

SEE PLAT ON REVERSE SIDE

A description of the physical condition of the monument as found and as set or reset: Found tag in concrete, RCE 6902, Good condition

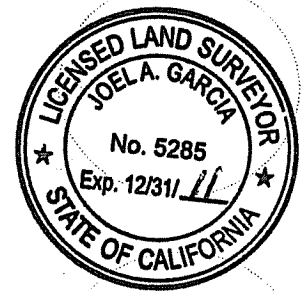
SEE PLAT ON REVERSE SIDE

SURVEYOR'S STATEMENT

This Corner Record was prepared by me or under my direction in conformance with

the Land Surveyor's Act on AUGUST 12, 2010

Signed [Signature] P.L.S. or R.C.E. No.: LS 5285



COUNTY SURVEYOR'S STATEMENT

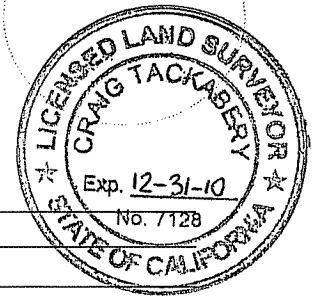
This Corner Record was received AUGUST 18, 2010 and examined

and filed SEPTEMBER 7, 2010

Signed [Signature] P.L.S. or R.C.E. No.: 7128

Title COUNTY SURVEYOR

County Surveyor's Comment _____



CORTE REAL

BEARING: SET"+1-2 N88°02'10"E
 BEARING: SET"+3-4 N23°43'10"E

LOT 320
 14 M 56

S. ELISEO DR.

LOT 333
 14 M 56
 APN 022-285-002

CITY MON

CITY MON

N56°07'32"W
 112.99

SET"+4

N59°49'59"E
 216.00

SET"+1

80.31

CITY MON

SET"+2

LOT 312
 14 M 56

N61°45'46"E
 150.72

SET"+3

LOT 311
 14 M 56

FD SRVY SPK



GRAPHIC SCALE



BASIS OF BEARINGS

"BON AIR SUB. NO. EIGHT" (14 M 56)
 MARIN COUNTY RECORDS

LEGEND

- "+" CUT CROSS IN CURB
- SRVY SPK SURVEY SPIKE
- FD FOUND
- MON MONUMENT

CORNER RECORD #1
 STREET MONUMENTS— SOUTH ELISEO DRIVE
 LARKSPUR, MARIN COUNTY, CALIFORNIA



MARK THOMAS & COMPANY, INC.
 Providing Engineering, Surveying, and Planning Services
 1243 Alpine Road
 Walnut Creek, CA 94596
 (925) 938-0383

DRAWN. BY KW
 CKD. BY JG
 DATE 08/09/10
 SCALE 1"=40 FEET

APPROVED ON 08/10/10
 BY J. Garcia
 LS NO. 5285 12/31/11

JOB NO. 58-0225B
 PAGE 2 OF 2