

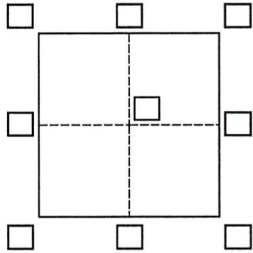
# CORNER RECORD

Agency Index DPW#19-059

Document Number AP#022-273-26

City of Larkspur County of Marin, California

Brief Legal Description Lot 260, 14 RM 29



### CORNER TYPE

Government Corner  Control   
 Meander  Property   
 Rancho  Other

Date of Survey May 31, 2019

### COORDINATES (Optional)

N. \_\_\_\_\_ E. \_\_\_\_\_

Elevation \_\_\_\_\_

Units  Metric  U.S. Survey Foot

Horizontal Datum \_\_\_\_\_

Zone \_\_\_\_\_ Epoch Date \_\_\_\_\_

Vertical Datum \_\_\_\_\_

Complies with Public Resources Code §§8801-8819

Complies with Public Resources Code §§8890-8902

PLS Act Ref.:  8765(d)  8771  8773  Other:

Corner/Monument:  Left as found  Established  Rebuilt  Pre-Construction  
 Found and tagged  Reestablished  Referenced  Post-Construction

Narrative of corner identified and monument as found, set, reset, replaced, or removed:

See sheet #2 for description(s):

Nail & Tags set in curb are sideline extensions.

### SURVEYOR'S STATEMENT

This Corner Record was prepared by me or under my direction in conformance with

the Professional Land Surveyors' Act on June 3, 2019

Signed Jay G. H. P.L.S. or R.C.E. No. 30465



### COUNTY SURVEYOR'S STATEMENT

This Corner Record was received JUNE 13, 2019

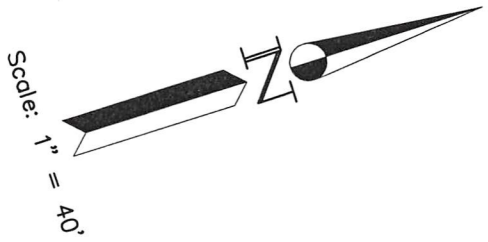
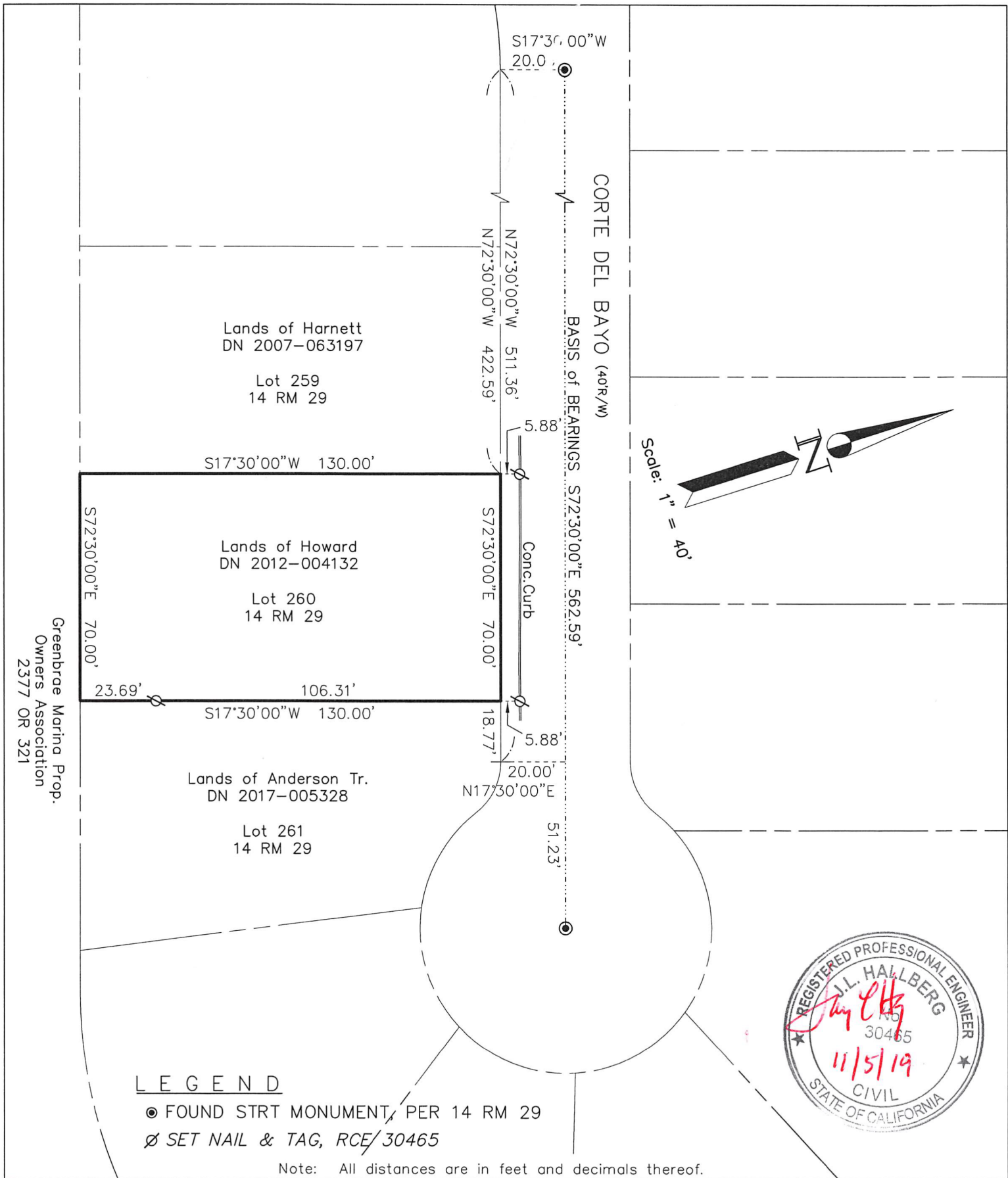
and examined and filed APR. 22, 2020

Signed J.R. Semerad P.L.S. or R.C.E. No. 9292

Title DEPUTY C.S.

County Surveyor's Comment





**LEGEND**

- FOUND STRT MONUMENT, PER 14 RM 29
- ∅ SET NAIL & TAG, RCE/30465

Note: All distances are in feet and decimals thereof.



Linetype Legend	
	Subject parcel
	Parcel boundary
	Old boundary, easement
	Boundary tie
	Right of Way center-line
	Fence
	Basis of Bearings

Date: May 2019 Scale: 1" = 40'

**J.L. ENGINEERING**  
 1539 4th ST.  
 San Rafael, CA. 94901  
 (415) 457-6647

2019-032\DWG\2019-032-BASE.CREC

**Corner Record**

Lands of Howard - 60 Cortes del Bayo  
 APN 022-273-26, Larkspur, Marin County, CA  
 Sheet: 1 of 2