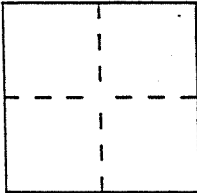


**CORNER RECORD**

Assessor's Parcel Number 022-263-09

City of Larkspur County of Marin, California

Brief Legal Description Lot 43, Book 15, Maps, Page 35, Marin Co. Records



**CORNER TYPE**

- Government Corner
- Meander
- Rancho
- Date of Survey \_\_\_\_\_
- Control
- Property
- Other

**COORDINATES (Optional)**

N. \_\_\_\_\_  
 E. \_\_\_\_\_  
 Zone \_\_\_\_\_ Datum \_\_\_\_\_  
 Elev. \_\_\_\_\_

Corner — Left as found  Found and tagged  Established  Reestablished  Rebuilt

Identification and type of corner found: Evidence used to identify or procedure used to establish or reestablish the corner:  
No Lot Corners Found. Calculated Lot Corners and Street monuments based on Sub. Map. Set N'Wly & N'Ely Lot Corners based on Found Street Monuments

A description of the physical condition of the monument as found and as set or reset: Set 3/4" Iron pipe & tag LS 4397

**SURVEYOR'S STATEMENT**

This Corner Record was prepared by me or under my direction in conformance with the Land Surveyors' Act on Oct. 12 192006

Signed Dale White L.S. or R.C.E. Number 4397

**COUNTY SURVEYOR'S STATEMENT**

This Corner Record was received OCTOBER 16, 2006 and examined and filed NOVEMBER 15, 192006

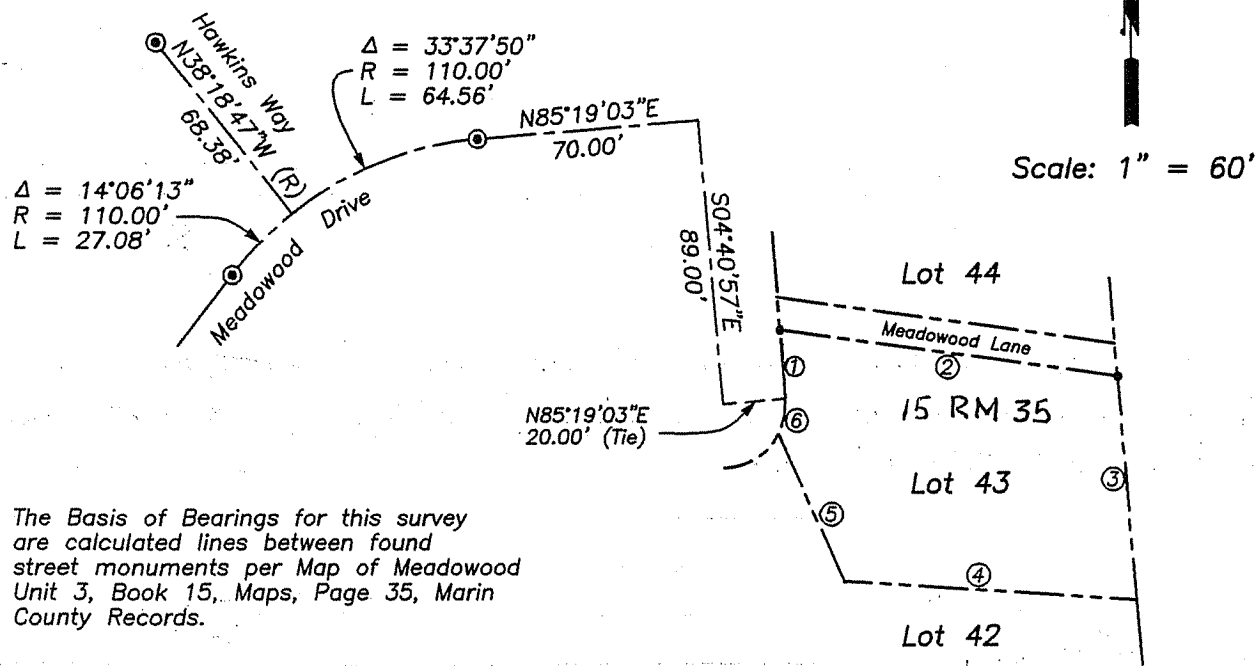
Signed \_\_\_\_\_ Title COUNTY SURVEYOR

County Surveyor's Comment \_\_\_\_\_



*Dale White*  
10-12-06





The Basis of Bearings for this survey are calculated lines between found street monuments per Map of Meadowood Unit 3, Book 15, Maps, Page 35, Marin County Records.

Course Table

Course No., or Curve No.	Bearing or Curve Delta	Radius	Distance or Curve Length
1	N04°40'57"W		21.59'
2	S82°10'25"E		107.04'
3	S04°40'57"E		70.15'
4	N86°16'42"W		91.53'
5	N24°29'10"W		50.55'
6	32°42'13"	20.00'	11.42'

Legend

- Found Street Monument Per 15, RM, 35
- Set 3/4 Inch Iron Pipe and Tag LS 4397
- See Course Table for Lot Line Dimensions

Corner Record

Lot 43, Book 15, Maps, Page 35  
 Marin County Records