

CORNER RECORD

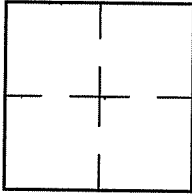
Document Number A.P. 022-263-08

City of LARKSPUR

County of MARIN, California

Brief Legal Description LOT 42, 15 R.M. 35

CORNER TYPE COORDINATES (Optional)



Government Corner  Control   
Meander  Property   
Rancho  Other

N. \_\_\_\_\_  
E. \_\_\_\_\_  
Zone \_\_\_\_\_ NAD27  NAD83   
NAD83 Epoch \_\_\_\_\_  
Elev. \_\_\_\_\_  
Vert. Datum: NGVD29  NAVD88   
Meas. Units: Metric  Imperial

Date of Survey 08/04/09

Corner- Left as found  Found and tagged  Established  Reestablished  Rebuilt

Identification and type of corner found: Evidence used to identify or procedure used to establish or reestablish the corner:  
REESTABLISHED NORTHERLY CORNER AND NORTHEASTERLY LINE OF LOT 42 PER STREET MONUMENTS  
PER 15 R.M. 35 AS SHOWN ON SHEET 2.

A description of the physical condition of the monument as found and as set or reset: SEE SHEET 2.

SURVEYOR'S STATEMENT

This Corner Record was prepared by me or under my direction in conformance with

the Land Surveyor's Act on AUGUST 4 2009

Signed Lawrence P. Doyle P.L.S. or R.C.E. No. P.L.S. 4694



COUNTY SURVEYOR'S STATEMENT

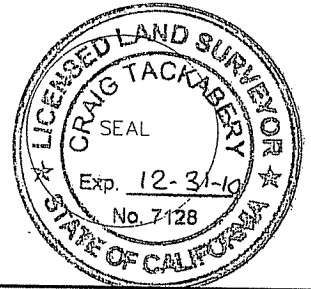
This Corner Record was received SEPTEMBER 1, 2009

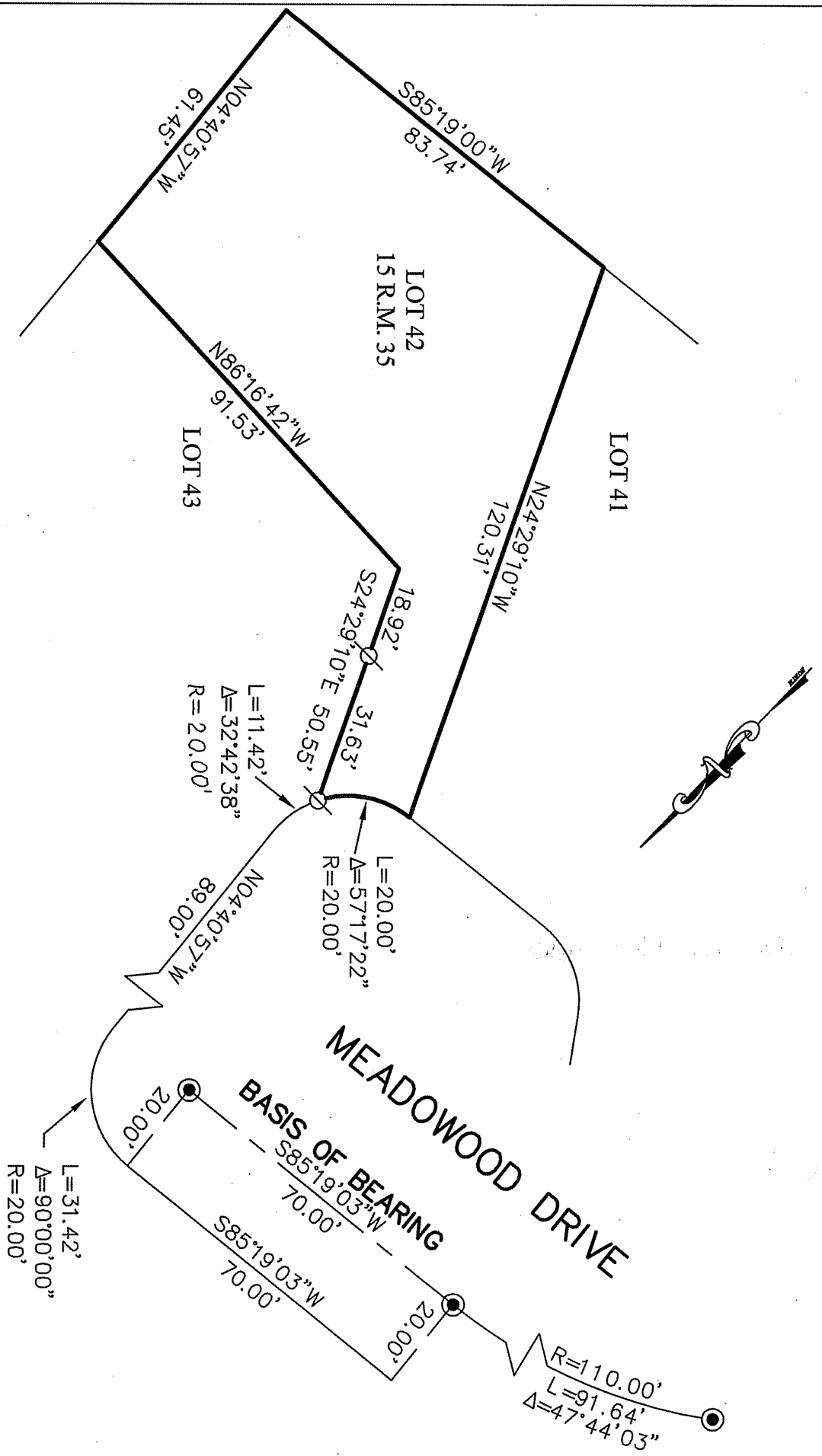
and examined and filed SEPTEMBER 16, 2009

Signed [Signature] P.L.S. or R.C.E. No. 7128

Title COUNTY SURVEYOR

County Surveyor's Comment \_\_\_\_\_





**BASIS OF BEARING**

THE BASIS OF BEARING FOR THIS SURVEY IS S85°19'03"W BETWEEN FOUND MONUMENTS IN MEADOWOOD DRIVE PER 15 R.M. 35.

**LEGEND**

- FOUND STREET MONUMENT
- SET NAIL & TAG, L.S. 4694



CORNER RECORD LOT 42, 15 R.M. 35	
LARKSPUR MARIN COUNTY CALIFORNIA	
SCALE: 1" = 30'	DRAWN BY:
DATE: 08/04/09	SHEET 1 OF 1
<b>LAWRENCE P. DOYLE</b> LAND SURVEYOR/CIVIL ENGINEER 100 HELENS LANE MILL VALLEY CA 94941 (415-388-9585)	
	DRAWING NO. 1592-CR