

# CORNER RECORD

Document Number A.P. 22-262-20

City of LARKSPUR

County of MARIN, California

Legal Description LOT 48 15 R.M. 35

### CORNER TYPE

Government Corner  Control   
 Meander  Property   
 Rancho  Other

Date of Survey 12/21/01

### COORDINATES (Optional)

N. \_\_\_\_\_  
 E. \_\_\_\_\_  
 Zone \_\_\_\_\_ NAD27  NAD83   
 NAD83 Epoch \_\_\_\_\_  
 Elev. \_\_\_\_\_  
 Vert. Datum: NGVD29  NAVD88   
 Meas. Units: Metric  Imperial

Corner- Left as found  Found and tagged  Established  Reestablished  Rebuilt

Identification and type of corner found: Evidence used to identify or procedure used to establish or reestablish the corner:

ESTABLISHED THE PROPERTY CORNER FROM THE MONUMENTS PER 15 R.M. 35

(SEE PAGE 2).

A description of the physical condition of the monument as found and as set or reset:

SEE PAGE 2

### SURVEYOR'S STATEMENT

This Corner Record was prepared by me or under my direction in conformance with

the Land Surveyor's Act on DECEMBER 2001

Signed Lawrence P. Doyle P.L.S. or R.C.E. No. PLS 4694



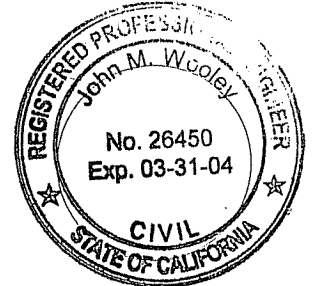
### COUNTY SURVEYOR'S STATEMENT

This Corner Record was received FEBRUARY 11, 2002

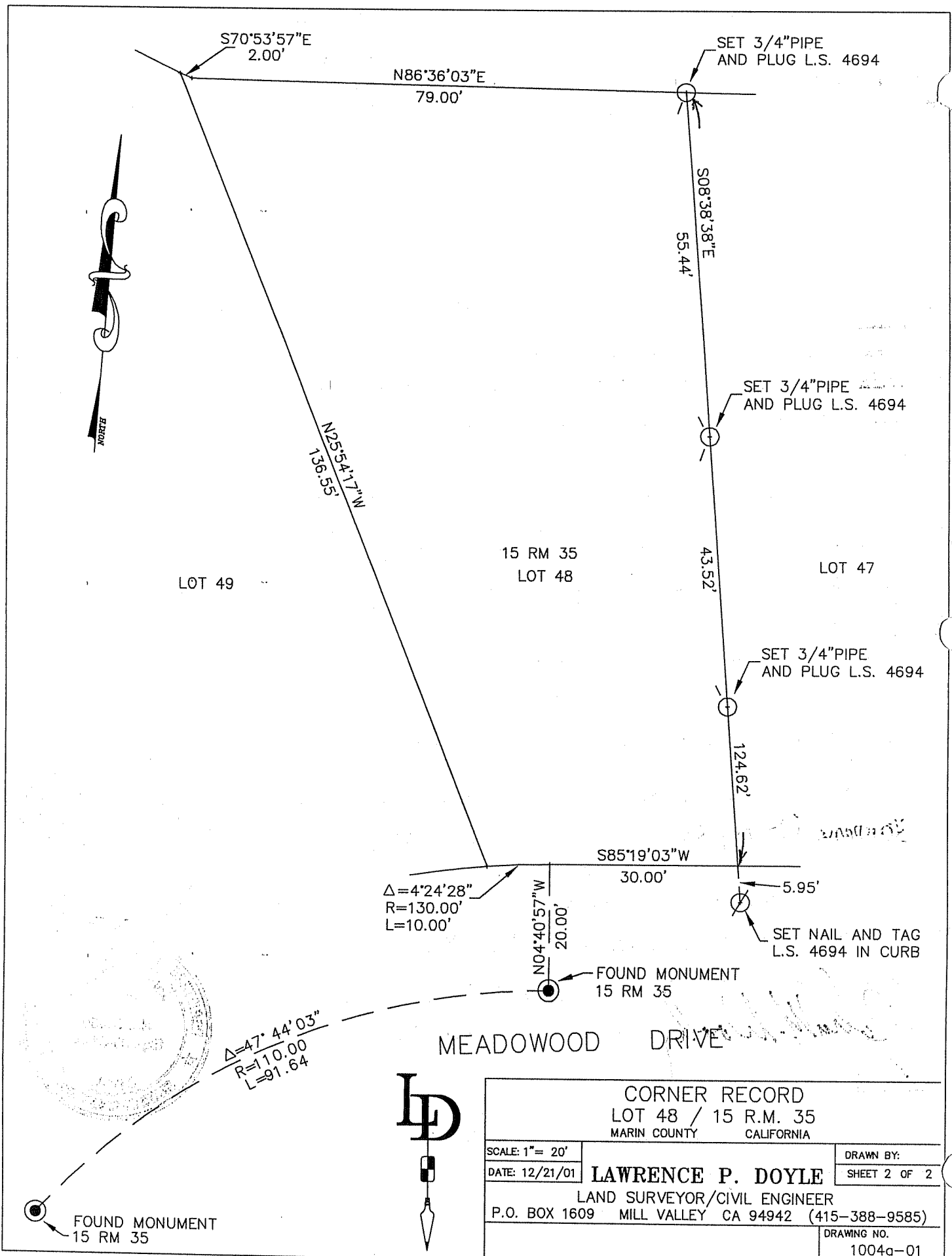
and examined and filed FEBRUARY 12, 2002

Signed John M. Wooley P.L.S. or R.C.E. No. 26450

Title DEPUTY



County Surveyor's Comment \_\_\_\_\_



<b>CORNER RECORD</b> LOT 48 / 15 R.M. 35 MARIN COUNTY CALIFORNIA		
SCALE: 1" = 20'	<b>LAWRENCE P. DOYLE</b> LAND SURVEYOR/CIVIL ENGINEER P.O. BOX 1609 MILL VALLEY CA 94942 (415-388-9585)	DRAWN BY:
DATE: 12/21/01		SHEET 2 OF 2
		DRAWING NO. 1004a-01