

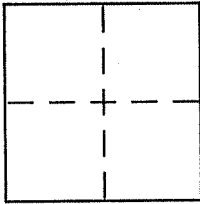
**CORNER RECORD**

Document Number APN 022-261-2D

City of Larkspur

County of Marin, California

Brief Legal Description Lot 7 of 014 RM 032



**CORNER TYPE**

Government Corner  Control   
Meander  Property   
Rancho  Other   
Date of Survey MAY 23, 2012

**COORDINATES (Optional)**

N. \_\_\_\_\_  
E. \_\_\_\_\_  
Zone \_\_\_\_\_ NAD27  NAD83   
NAD83 Epoch \_\_\_\_\_  
Elev. \_\_\_\_\_  
Vert. Datum: NGVD29  NAVD88   
Meas. Units: Metric  Imperial

Corner - Left as found  Found and tagged  Established  Reestablished  Rebuilt

Identification and type of corner found: Evidence used to identify or procedure used to establish or reestablish the corner:

See page 2 of 2.

A description of the physical condition of the monument as found and as set or reset:

See page 2 of 2.

**SURVEYOR'S STATEMENT**

This Corner Record was prepared by me or under my direction in conformance with the Land Surveyor's Act on 6/12/12

Signed [Signature] P.L.S or R.C.E. No. 6784



**COUNTY SURVEYOR'S STATEMENT**

This Corner Record was received JUNE 28, 2012

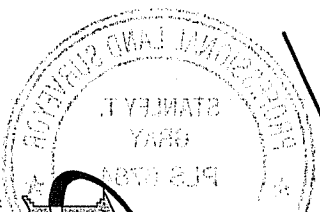
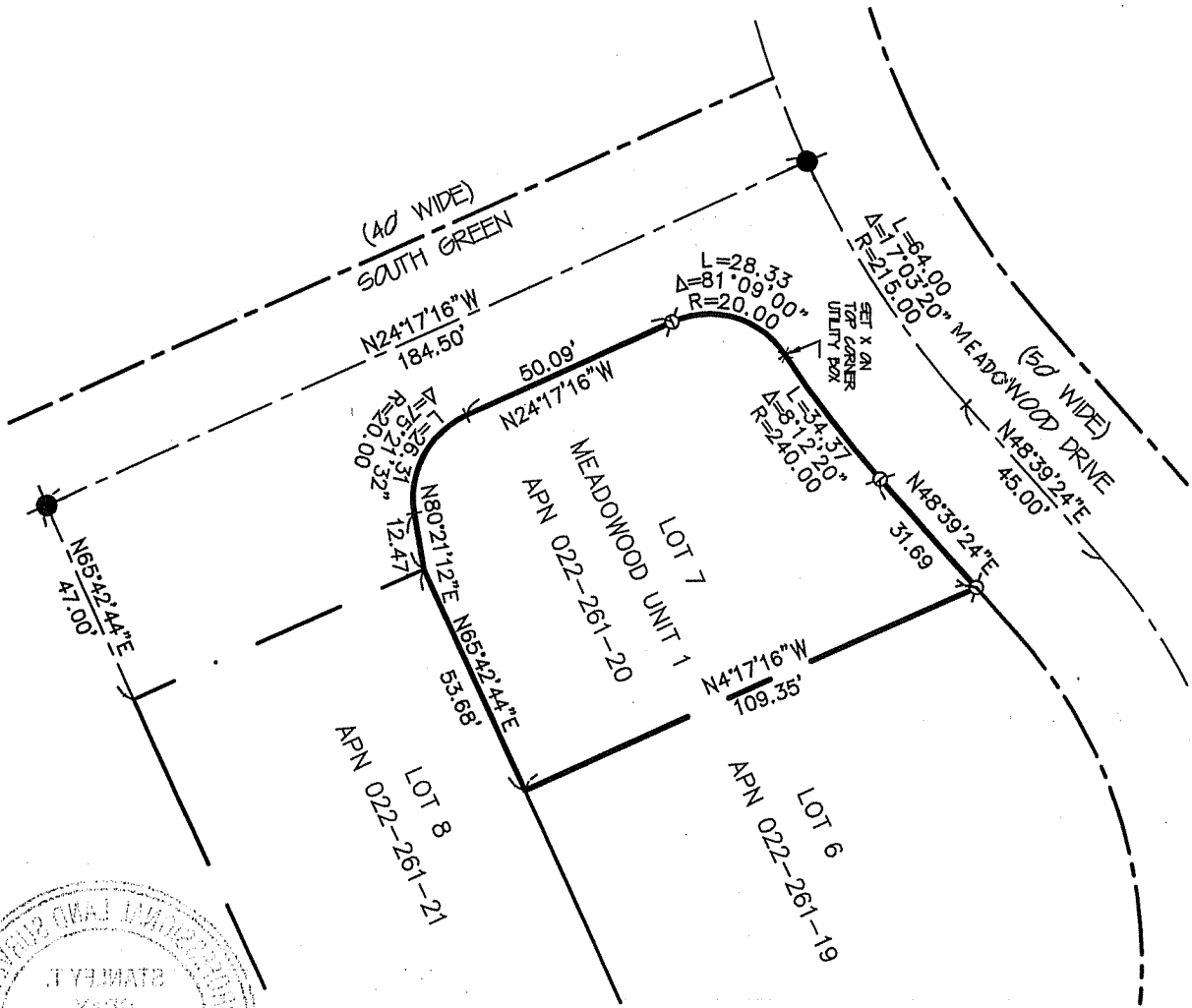
and examined and filed JULY 23, 2012

Signed [Signature] P.L.S or R.C.E. No. 7128

Title COUNTY SURVEYOR



County Surveyor's Comment \_\_\_\_\_



**Meridian Surveying**  
 CORNER RECORD  
 1812 UNION STREET  
 SAN FRANCISCO, CA 94123  
 (415) 440-4131  
 info@meridiansurvey.com  
 12040  
 777 GRAND AVENUE, SUITE 202  
 SAN RAFAEL, CA 94901  
 (415) 456-6450

- LEGEND**
- ⊙ FOUND CITY MONUMENT
  - ⊙ SET 5/8" REBAR WITH CAP, PLS 6784
  - ✕ SET SCRIBED X
- NOTE  
RECORD=MEASURED

**REFERENCE**  
 "MAP OF MEADOWWOOD UNIT ONE"  
 FILED FOR RECORD JULY 1ST, 1968  
 IN VOLUME 14 OF MAPS, AT PAGE  
 32, MARIN COUNTY RECORDS.

