

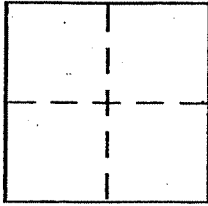
# CORNER RECORD

Document Number A.P.N. 22-261-18

City of Larkspur

County of Marin, California

Brief Legal Description Lot 5 Meadowood Unit One 14 RM 32



### CORNER TYPE

Government Corner  Control   
 Meander  Property   
 Rancho  Other   
 Date of Survey \_\_\_\_\_

### COORDINATES (Optional)

N. \_\_\_\_\_  
 E. \_\_\_\_\_  
 Zone \_\_\_\_\_ NAD27  NAD83   
 NAD83 Epoch \_\_\_\_\_  
 Elev. \_\_\_\_\_  
 Vert. Datum: NGVD29  NAVD88   
 Meas. Units: Metric  Imperial

Corner - Left as found  Found and tagged  Established  Reestablished  Rebuilt

Identification and type of corner found: Evidence used to identify or procedure used to establish or reestablish the corner:

Found standard street monuments on the centerline of Meadowood

Drive per 14 RM 32.

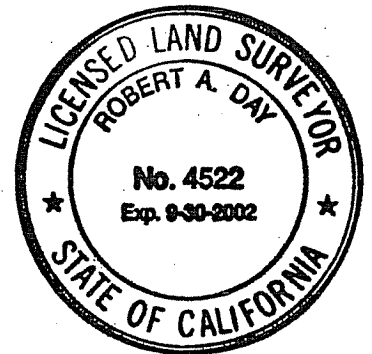
A description of the physical condition of the monument as found and as set or reset:

Set 3/4" iron pipe and plastic cap stamped "RCE 18221" on the  
property line 0.27' NE of southwesterly corner as shown on page two.

### SURVEYOR'S STATEMENT

This Corner Record was prepared by me or under my direction in conformance with the Land Surveyor's Act on APRIL 23, 2002

Signed [Signature] P.L.S. or ~~R.C.E.~~ No. 4522



### COUNTY SURVEYOR'S STATEMENT

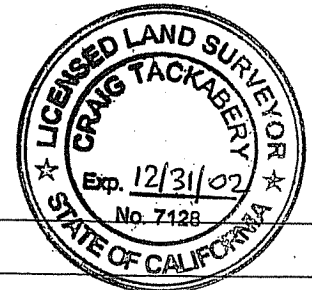
This Corner Record was received APRIL 25, 2002

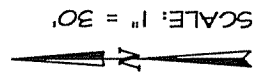
and examined and filed APRIL 26, 2002

Signed [Signature] P.L.S. or R.C.E. No. 7128

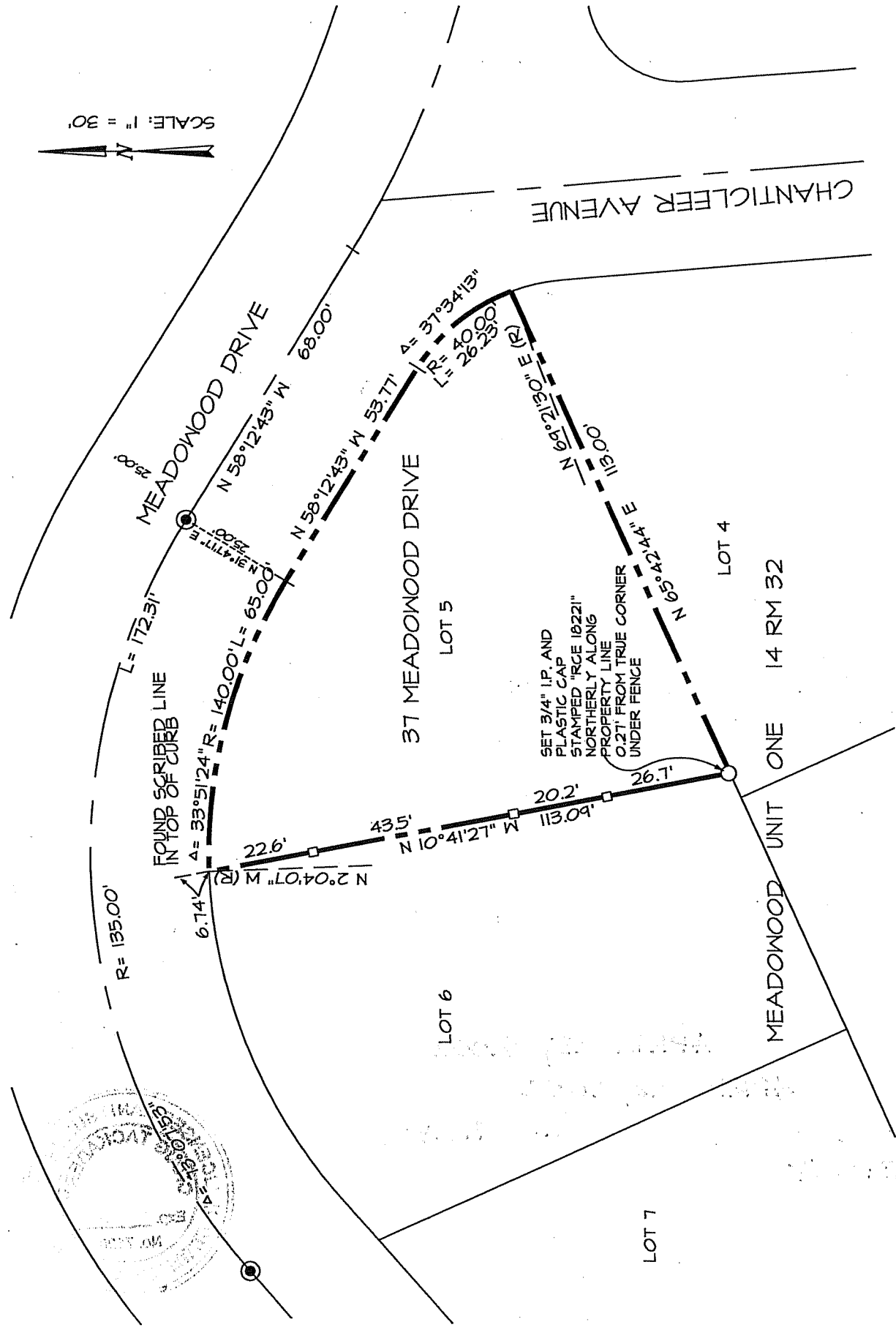
Title DEPUTY

County Surveyor's Comment \_\_\_\_\_





SCALE: 1" = 30'



**EXHIBIT "A"**

**IL. SCHWARTZ ASSOCIATES, INC.®**  
 CIVIL ENGINEERING AND LAND SURVEYING



79 GALLI DRIVE NOVATO, CA 94949 (415)883-9200 FAX 883-2763

**NOTE:**  
 ALL DIMENSIONS SHOWN HEREON ARE PER  
 14 RM 32 UNLESS OTHERWISE NOTED.

- LEGEND**
- FOUND STANDARD STREET MONUMENT
  - SET 3/4" IRON PIPE & TAG R.C.E. 19221"
  - SET WOOD GINNY ON PROPERTY LINE

DATE: 04/18/02  
 FILE: 7378REC.DWG

A.P.N. 22-261-18