

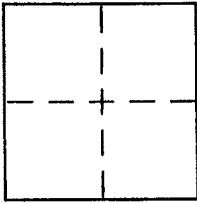
CORNER RECORD

Document Number APN: 022-212-29

City of GREENBRAE

County of MARIN, California

Brief Legal Description LOTS 122 AND PORTION OF LOT 122 BON AIR SUB. NO. 91X 12M60



CORNER TYPE

Government Corner Control
Meander Property
Rancho Other
Date of Survey _____

COORDINATES (Optional)

N. _____
E. _____
Zone _____ NAD27 NAD83
NAD83 Epoch _____
Elev. _____
Vert. Datum: NGVD29 NAVD88
Meas. Units: Metric Imperial

Corner - Left as found Found and tagged Established Reestablished Rebuilt

Identification and type of corner found: Evidence used to identify or procedure used to establish or reestablish the corner:

SEE REVERSE

A description of the physical condition of the monument as found and as set or reset:

SEE REVERSE

SURVEYOR'S STATEMENT

This Corner Record was prepared by me or under my direction in conformance with the Land Surveyor's Act on 5/15 2013

Signed [Signature] P.L.S or R.C.E. No. 6784



COUNTY SURVEYOR'S STATEMENT

This Corner Record was received 5-22-2013

and examined and filed JUNE 3, 2013

Signed [Signature] P.L.S or R.C.E. No. 7821

Title DEPUTY CO. SURVEYOR



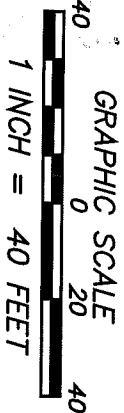
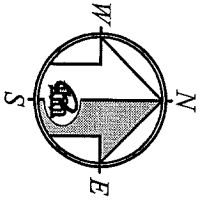
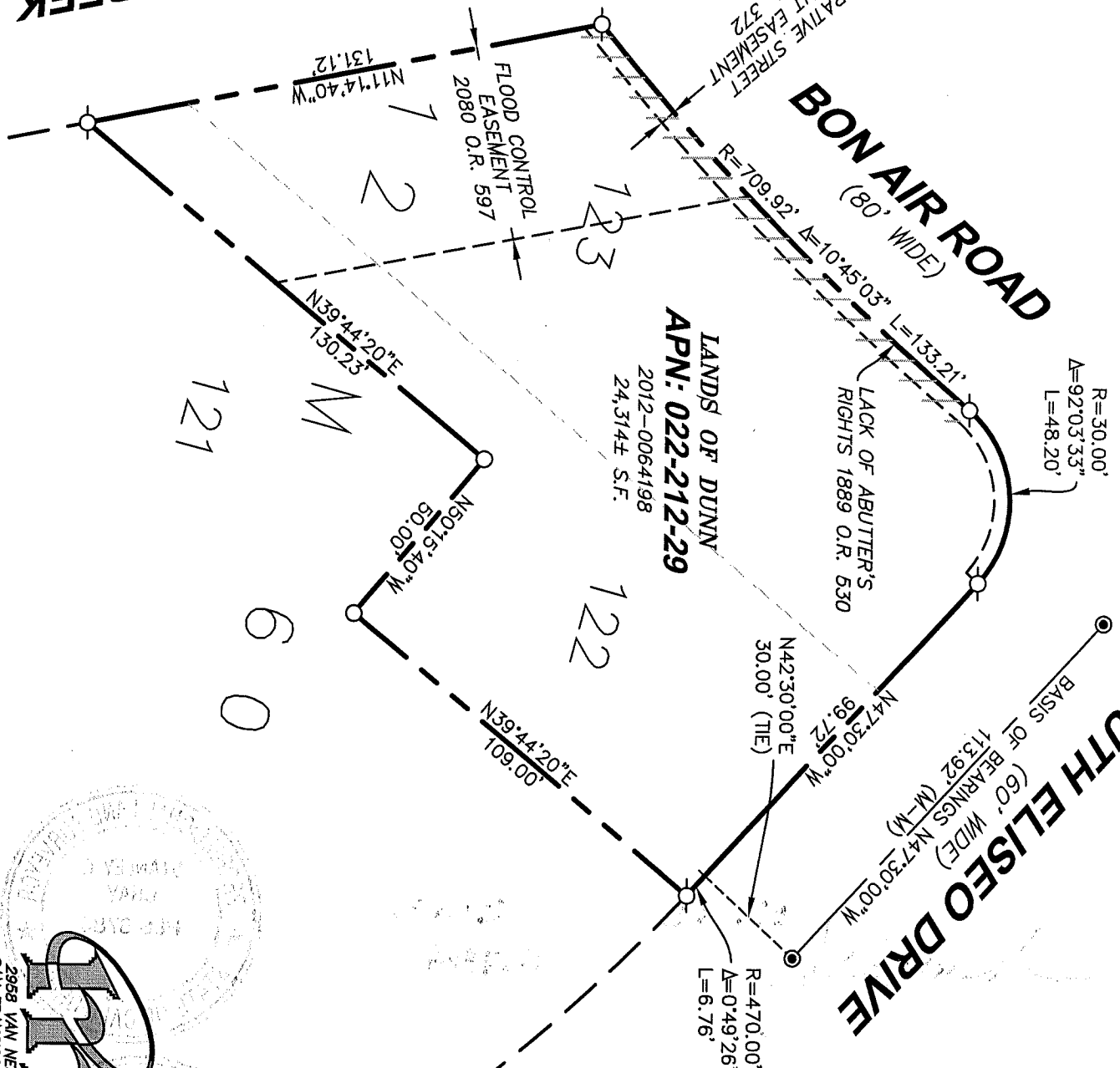
County Surveyor's Comment _____

CORTE MADERA CREEK

BON AIR ROAD
(80' WIDE)

SOUTH ELISEO DRIVE
(60' WIDE)
BASIS OF BEARINGS (M-M)
N47°30'00"W
N47°30'00"W
N47°30'00"W

LANDS OF DUNN
APN: 022-212-29
2012-0064198
24,314± S.F.



REFERENCE

"BON AIR SUB. NO. SIX" FILED FOR RECORD FEBRUARY 4, 1964 IN VOLUME 12 OF MAPS, AT PAGE 60, MARIN COUNTY RECORDS.

LEGEND

- FOUND STREET MONUMENT
- SET 5/8" REBAR WITH CAP, PLS 6784
- SET TACK WITH BRASS TAG, PLS 6784

NOTE:
RECORD=MEASURED.

CORNER RECORD

MERIDIAN SURVEYING
ENGINEERING, INC.

2968 VAN NESS AVENUE 15025 777 GRAND AVENUE #202
SAN FRANCISCO, CA 94109 SAN RAFAEL, CA 94901
(415) 440-4151 surveyrequest@meridiansurvey.com (415) 456-5460

