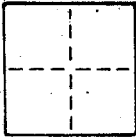


# CORNER RECORD

COUNTY OF MARIN T. \_\_\_\_\_ R. \_\_\_\_\_ MERIDIAN \_\_\_\_\_ CALIFORNIA  
 CORNER TYPE: GOVT. CORNER ☐ MEANDER ☐ RANCHO ☐ CONTROL ☐ OTHER ☒  
 CORNER IDENTIFICATION — DATE OF VISIT \_\_\_\_\_ 19\_\_\_\_



CORNER — LEFT AS FOUND ☐ FOUND AND TAGGED ☐ REESTABLISHED OBLITERATED CORNER ☐ REBUILT ☐

PHYSICAL DESCRIPTION OF CORNER FOUND; EVIDENCE AND METHOD USED TO IDENTIFY OR REESTABLISH

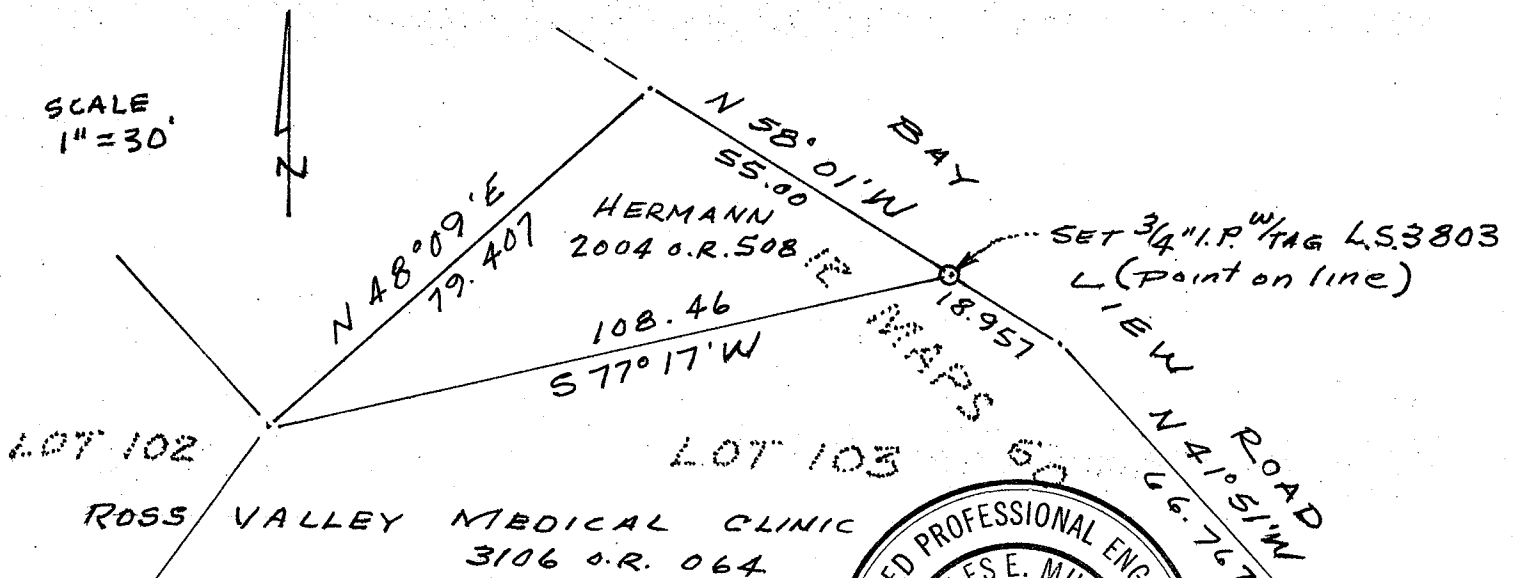
AP# 22-211-11

PHYSICAL DESCRIPTION OF MONUMENTS, REBUILT OR PERPETUATED

Set a 3/4" I.P. on northerly line of Lot 103, Map of Bon Air Subd. No. Six, filed in book 12 of maps page 60, Marin Co. Records, (Larkspur)

CALIFORNIA COORDINATE SYSTEM ORDER: FIRST ☐ SECOND ☐ THIRD ☐  
 STATIONS USED: NGS (USC & GS) ☐ STATE ☐ COUNTY ☐ OTHER ☐ STATION \_\_\_\_\_ STATION \_\_\_\_\_  
 ZONE \_\_\_\_\_ ELEVATION \_\_\_\_\_ NORTHINGS (Y) \_\_\_\_\_ EASTINGS (X) \_\_\_\_\_

SKETCH: (Include reference tie or witness points, remarks and topo of area)

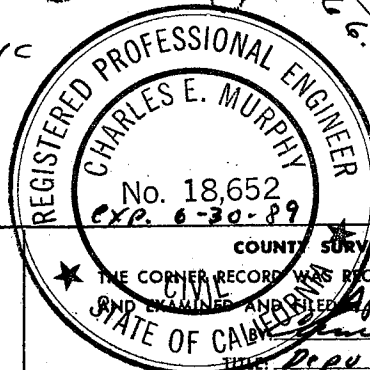


## SURVEYOR'S CERTIFICATE

THIS CORNER RECORD WAS PREPARED BY ME OR UNDER MY DIRECTION IN CONFORMANCE WITH THE LAND SURVEYORS ACT  
 MARCH 31 1986

SIGNED: D. M. Waag

L.S. or R.C.E. No.: L.S. 3803



## COUNTY SURVEYOR'S CERTIFICATE

THE CORNER RECORD WAS RECEIVED April 1 1986  
 AND EXAMINED AND ENTERED April 2 1986

STATE OF CALIFORNIA  
 TITLE: Deputy County Surveyor

DOCUMENT No. \_\_\_\_\_

STATEMENT ON BACK OF SHEET

YES ☐ NO ☒

SEAL