

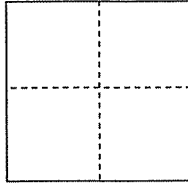
# CORNER RECORD

Document Number \_\_\_\_\_

City of LARKSPUR

County of MARIN, California

Brief Legal Description CENTERLINE MONUMENT, SOUTH ELISIO DRIVE (3)



### CORNER TYPE

Government Corner  Control   
 Meander  Property   
 Rancho  Other

### COORDINATES(Optional)

N. \_\_\_\_\_  
 E. \_\_\_\_\_

Zone \_\_\_\_\_ NAD27  NAD83

NAD83 Epoch \_\_\_\_\_

Elevation \_\_\_\_\_

Date of Survey AUGUST 3, 2010

Vert. Datum:  NADV88

Meas. Units: Metric  Imperial

Corner- Left as found  Found and tagged  Established  Reestablished  Rebuilt

Identification and type of corner found: Evidence used to identify or procedure used to establish or reestablish the corner:

Standard street monument @ centerline intersection South Elisio and Via Belardo. Monument was referenced with four cut "+"s, measured angle and distance, as well as angle and distance ties to adjoining monuments.

SEE PLAT ON REVERSE SIDE

A description of the physical condition of the monument as found and as set or reset: Found tag in concrete, RE 1812, Good condition

SEE PLAT ON REVERSE SIDE

### SURVEYOR'S STATEMENT

This Corner Record was prepared by me or under my direction in conformance with the Land Surveyor's Act on AUGUST 12, 2010

Signed Joel Garcia P.L.S. or R.C.E. No.: LS 5285



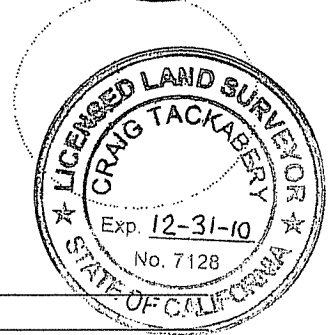
### COUNTY SURVEYOR'S STATEMENT

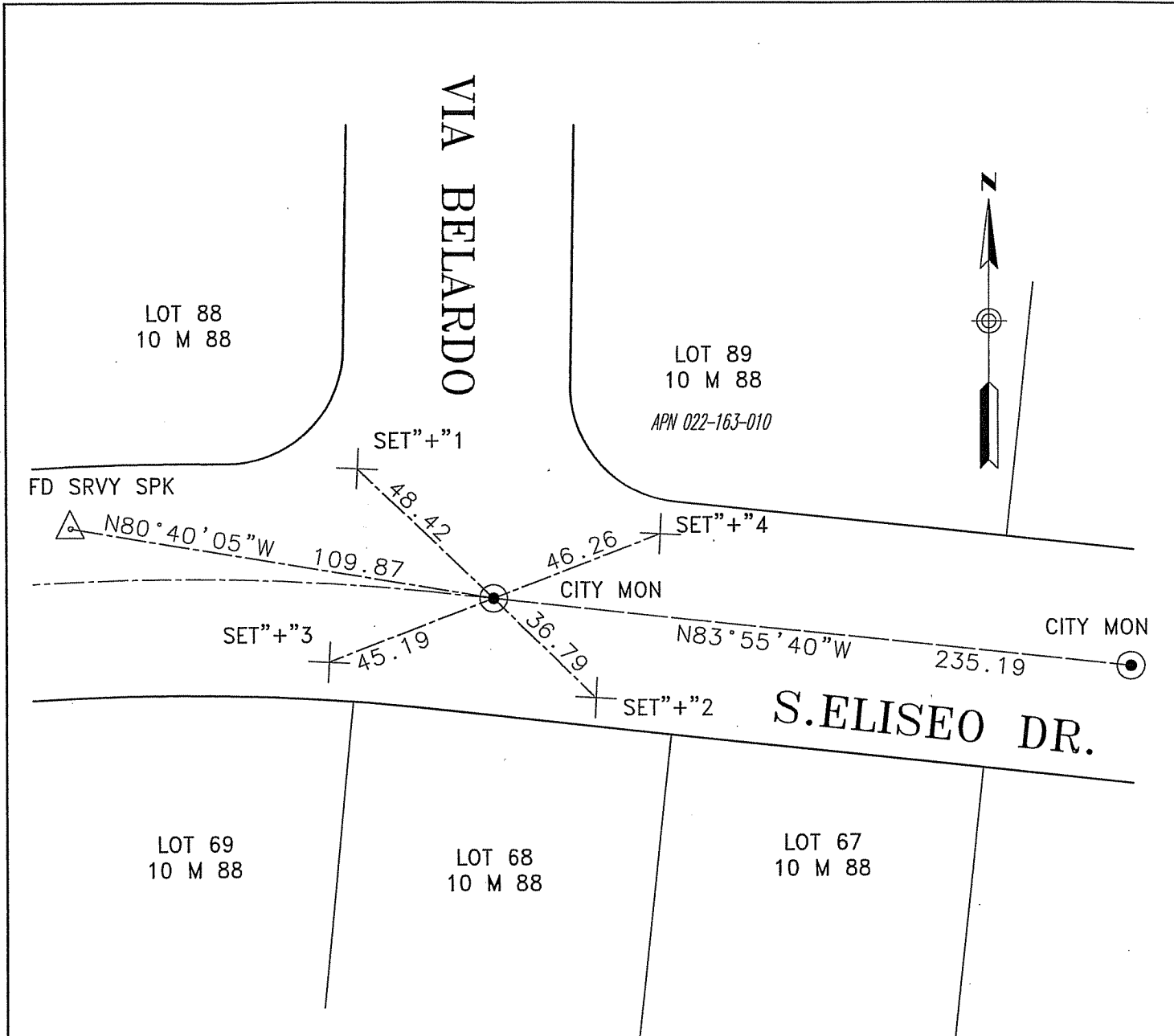
This Corner Record was received AUGUST 18, 2010 and examined and filed SEPTEMBER 7, 2010

Signed [Signature] P.L.S. or R.C.E. No.: 7128

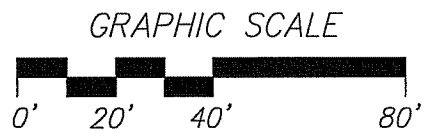
Title COUNTY SURVEYOR

County Surveyor's Comment \_\_\_\_\_





BEARING: SET"+1-2 N46°07'59"W  
 BEARING: SET"+3-4 N68°26'30"E



BASIS OF BEARINGS  
 "BON AIR SUB. NO. EIGHT" (14 M 56)  
 MARIN COUNTY RECORDS

LEGEND

"+"	CUT CROSS IN CURB
SRVY SPK	SURVEY SPIKE
FD	FOUND
MON	MONUMENT

CORNER RECORD #3  
 STREET MONUMENTS— SOUTH ELISEO DRIVE  
 LARKSPUR, MARIN COUNTY, CALIFORNIA



**MARK THOMAS & COMPANY, INC.**  
 Providing Engineering, Surveying, and Planning Services  
 1243 Alpine Road  
 Walnut Creek, CA 94596  
 (925) 938-0383

DRAWN. BY <u>KW</u>	APPROVED ON <u>08/10/10</u>	JOB NO. <b>58-0225B</b>	PAGE <b>2</b> OF <b>2</b>
CKD. BY <u>JG</u>	BY <u>J. Garcia</u>		
DATE <u>08/09/10</u>	SCALE <u>1"=40 FEET</u>	LS NO. 5285	12/31/11