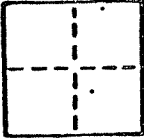


CORNER RECORD

COUNTY OF Marin T. 7 R. 8 MERIDIAN CALIFORNIA

CORNER TYPE: GOVT. CORNER MEANDER RANCHO CONTROL OTHER

CORNER IDENTIFICATION - DATE OF VISIT December 31 1987



AP# 22-161-07

CORNER - LEFT AS FOUND FOUND AND TAGGED REESTABLISHED OBLITERATED CORNER REBUILT

PHYSICAL DESCRIPTION OF CORNER FOUND; EVIDENCE AND METHOD USED TO IDENTIFY OR REESTABLISH

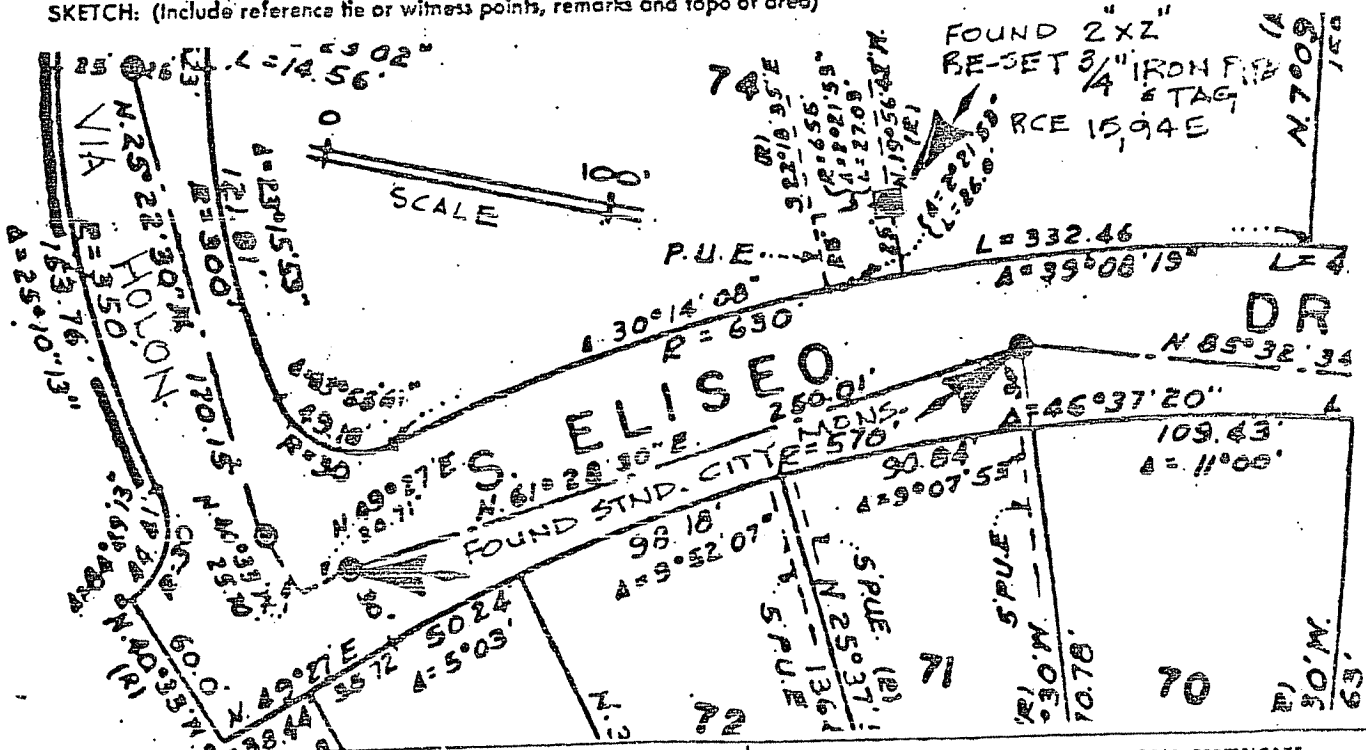
Found standard street monuments as shown on Recorded Map (10 RM 88)

PHYSICAL DESCRIPTION OF MONUMENTS REBUILT OR PERPETUATED

Found 2" x 2" Re-set 3/4" iron pipe and tag RCE 15945

CALIFORNIA COORDINATE SYSTEM ORDER: FIRST SECOND THIRD
STATIONS USED: NGS (USC & GS) STATE COUNTY OTHER STATION _____ STATION _____
ZONE _____ ELEVATION _____ NORTHINGS (N) _____ EASTINGS (E) _____

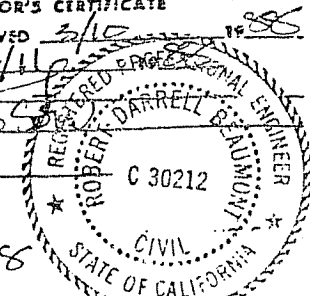
SKETCH: (Include reference tie or witness points, remarks and topo of area)



SURVEYOR'S CERTIFICATE
THIS CORNER RECORD WAS PREPARED BY ME OR UNDER MY DIRECTION IN CONFORMANCE WITH THE LEGISLATION ON Jan 11
SIGNED: W.S. [Signature]
L.S. or R.C.E. No.: 15945



COUNTY SURVEYOR'S CERTIFICATE
THE CORNER RECORD WAS RECEIVED 3/10 AND EXAMINED AND FILED 3/11
BY: [Signature]
TITLE: DEPCO
DOCUMENT No. _____
STATEMENT ON BACK OF SHEET



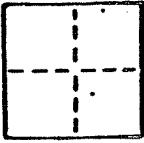
EX-3-31-88

CORNER RECORD

COUNTY OF Marin T. _____ R. _____ MERIDIAN _____ CALIFORNIA

CORNER TYPE: GOVT. CORNER MEANDER RANCHO CONTROL OTHER

CORNER IDENTIFICATION - DATE OF VISIT December 31 1987



AP# 22-161-07

CORNER - LEFT AS FOUND FOUND AND TAGGED REESTABLISHED OBLITERATED CORNER REBUILT

PHYSICAL DESCRIPTION OF CORNER FOUND; EVIDENCE AND METHOD USED TO IDENTIFY OR REESTABLISH

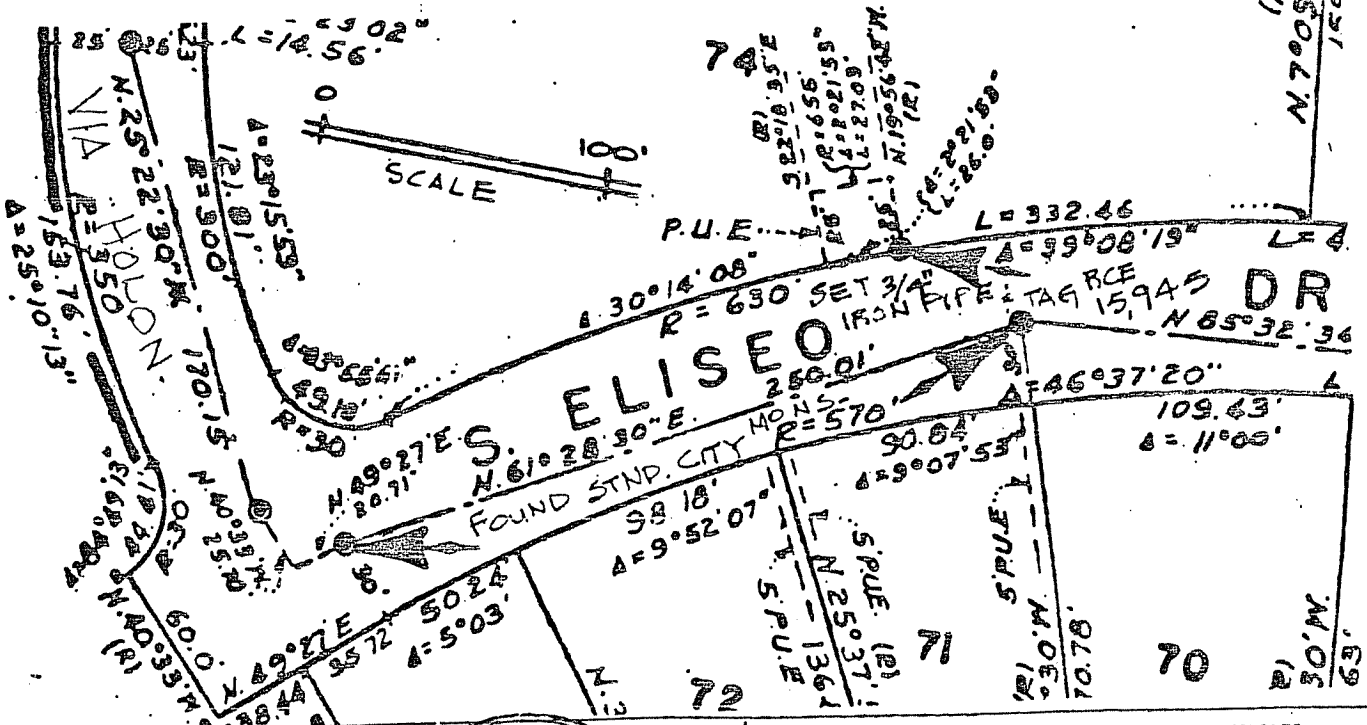
Found standard street monuments as shown on Recorded Map (10 RM 88)

PHYSICAL DESCRIPTION OF MONUMENTS REBUILT OR PERPETUATED

Set 3/4" iron pipe and tag RCE 15945

CALIFORNIA COORDINATE SYSTEM ORDER: FIRST SECOND THIRD
STATIONS USED: NGS (USC & GS) STATE COUNTY OTHER STATION _____ STATION _____
ZONE _____ ELEVATION _____ NORTHINGS (Y) _____ EASTINGS (X) _____

SKETCH: (Include reference tie or witness points, remarks and topo of area)



SURVEYOR'S CERTIFICATE: THIS CORNER RECORD WAS PREPARED BY W. S. ELISEO UNDER MY DIRECTION IN CONFORMANCE WITH THE LAND SURVEYING ACT ON Dec 11 1987

SIGNED: W. S. ELISEO
L.S. or R.C.E. No.: 15945

PROFESSIONAL ENGINEER
REGISTERED PROFESSIONAL ENGINEER
No. 15945
STATE OF CALIFORNIA
CIVIL

COUNTY SURVEYOR'S CERTIFICATE: THE CORNER RECORD WAS RECEIVED AND EXAMINED AND FILED BY DEPT. OF PUBLIC WORKS TITLE: DEPT. OF PUBLIC WORKS

DOCUMENT No. _____
STATEMENT ON BACK OF SHEET EX. 3-31-88

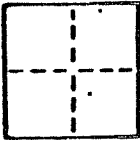
REGISTERED PROFESSIONAL ENGINEER
ROBERT BARRELL BAUMGART
C 30212
STATE OF CALIFORNIA
CIVIL

CORNER RECORD

COUNTY OF Marin T. _____ R. _____ MERIDIAN _____ CALIFORNIA

CORNER TYPE: GOVT. CORNER MEANDER RANCHO CONTROL OTHER

CORNER IDENTIFICATION - DATE OF VISIT December 31 19 87



AP# 22-161-07

CORNER - LEFT AS FOUND FOUND AND TAGGED REESTABLISHED OBLITERATED CORNER RESULT

PHYSICAL DESCRIPTION OF CORNER FOUND; EVIDENCE AND METHOD USED TO IDENTIFY OR REESTABLISH

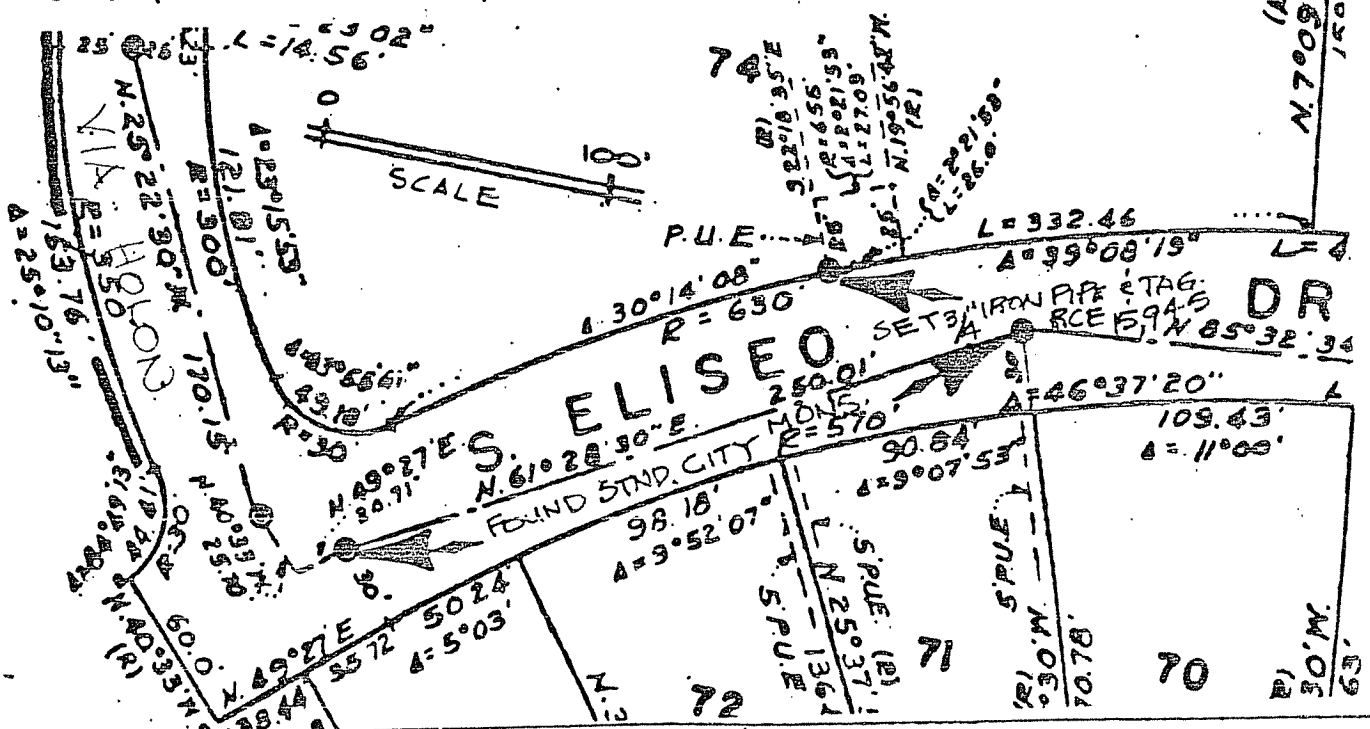
Found standard street monuments as shown on Recorded Map (10 RM 88)

PHYSICAL DESCRIPTION OF MONUMENTS RESULT OR PERPETUATED

Set 3/4" iron pipe and tag RCE 15945

CALIFORNIA COORDINATE SYSTEM ORDER: FIRST SECOND THIRD
STATIONS USED: NGS (USC & GS) STATE COUNTY OTHER STATION _____ STATION _____
ZONE _____ ELEVATION _____ NORTHINGS (N) _____ EASTINGS (E) _____

SKETCH: (Include reference tie or witness points, remarks and topo of area)

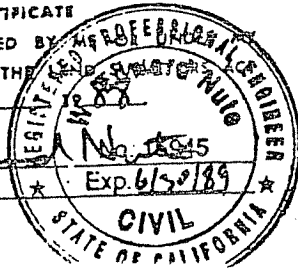


SURVEYOR'S CERTIFICATE

THIS CORNER RECORD WAS PREPARED BY _____ IN CONFORMANCE WITH THE _____ ON Jan 11

SIGNED: W. S. [Signature]

L.S. or R.C.E. No.: 15945



COUNTY SURVEYOR'S CERTIFICATE

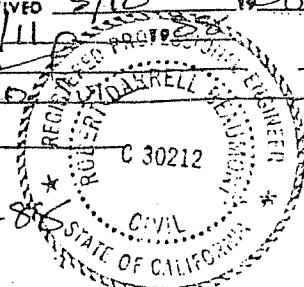
THE CORNER RECORD WAS RECEIVED 3/10 AND EXAMINED AND FILED 3/11

BY: RDB TITLE: Dep Co

DOCUMENT No. _____

STATEMENT ON BACK OF SHEET

EX. 3-31-86

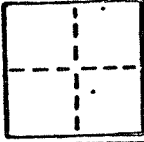


CORNER RECORD

COUNTY OF Marin T. _____ R. _____ MERIDIAN _____ CALIFORNIA

CORNER TYPE: GOVT. CORNER MEANDER RANCHO CONTROL OTHER

CORNER IDENTIFICATION — DATE OF VISIT December 31 1987



AP# 22-161-07

CORNER — LEFT AS FOUND FOUND AND TAGGED REESTABLISHED OBLITERATED CORNER RESULT

PHYSICAL DESCRIPTION OF CORNER FOUND; EVIDENCE AND METHOD USED TO IDENTIFY OR REESTABLISH

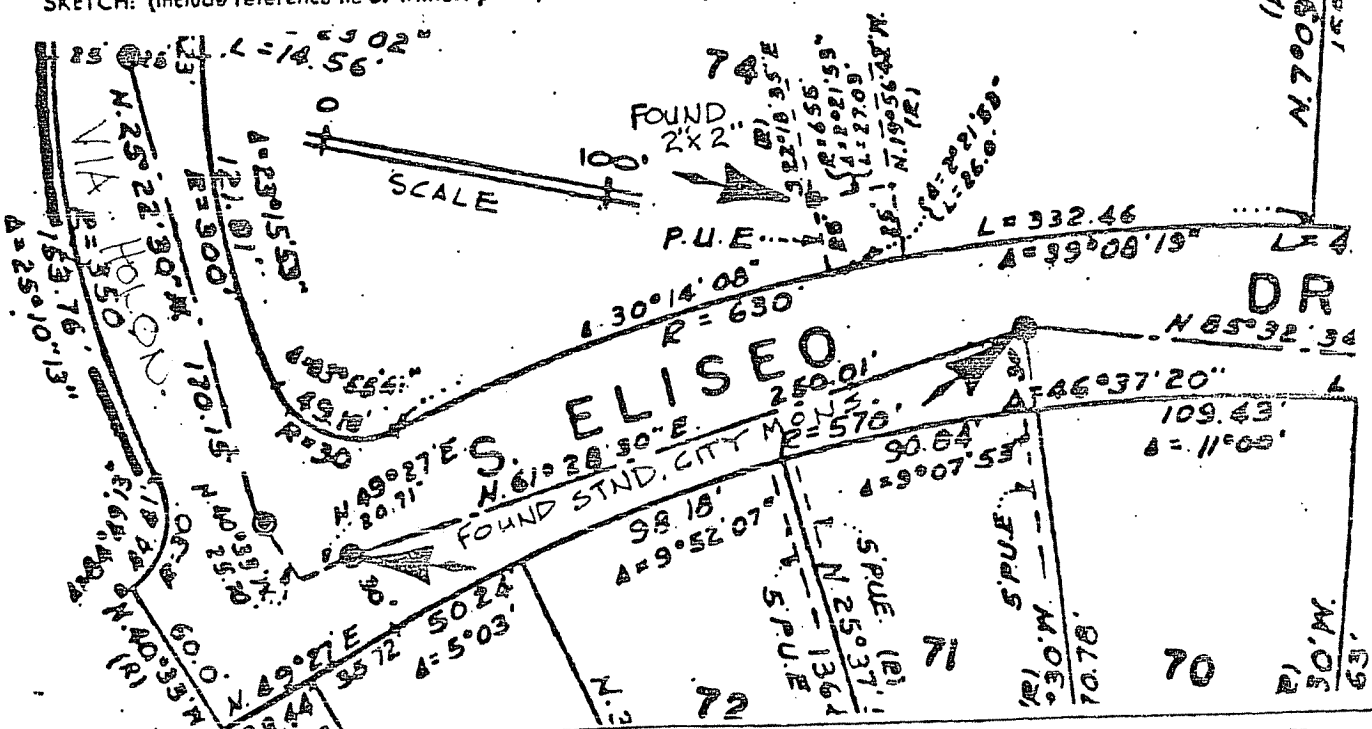
Found standard street monuments as shown on Recorded Map (10 RM 88)

PHYSICAL DESCRIPTION OF MONUMENTS RESULT OR PERPETUATED

Found 2" x 2"
Left in tact

CALIFORNIA COORDINATE SYSTEM ORDER: FIRST SECOND THIRD STATION _____ STATION _____
STATIONS USED: NGS (USC & GS) STATE COUNTY OTHER EASTINGS (X) _____
ZONE _____ ELEVATION _____ NORTHINGS (Y) _____

SKETCH: (Include reference tie or witness points, remarks and topo of area)



SURVEYOR'S CERTIFICATE
THIS CORNER RECORD WAS PREPARED BY _____
DIRECTION IN CONFORMANCE WITH THE _____
ON Jan 11

SIGNED: W. S. [Signature]
L.S. or R.C.E. No.: 15945



COUNTY SURVEYOR'S CERTIFICATE
THE CORNER RECORD WAS RECEIVED 2/10 1988
AND EXAMINED AND FILED 2/11
BY: [Signature]
TITLE: Depl...

DOCUMENT No. _____
STATEMENT ON BACK OF SHEET

EX-3-31-88

