

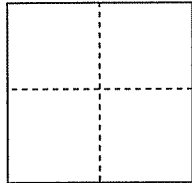
# CORNER RECORD

Document Number \_\_\_\_\_

City of LARKSPUR

County of MARIN, California

Brief Legal Description CENTERLINE MONUMENT, SOUTH ELISIO DRIVE (6)



### CORNER TYPE

Government Corner  Control

Meander  Property

Rancho  Other

### COORDINATES(Optional)

N. \_\_\_\_\_

E. \_\_\_\_\_

Zone  NAD27  NAD83

NAD83 Epoch \_\_\_\_\_

Elevation \_\_\_\_\_

Vert. Datum:  NADV88

Meas. Units: Metric  Imperial

Date of Survey AUGUST 3, 2010

Corner- Left as found  Found and tagged  Established  Reestablished  Rebuilt

### Identification and type of corner found: Evidence used to identify or procedure used to establish or reestablish the corner:

Standard street monument @ centerline intersection South Elisio and Lower Via Casitas. Monument was referenced with four cut "+", measured angle and distance, as well as angle and distance ties to adjoining monuments.

SEE PLAT ON REVERSE SIDE

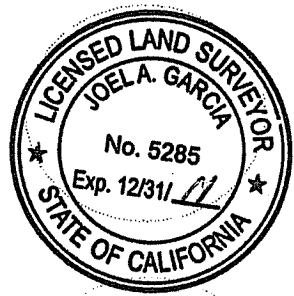
A description of the physical condition of the monument as found and as set or reset: Found tag in concrete, RE 1812,  
Good condition

SEE PLAT ON REVERSE SIDE

### SURVEYOR'S STATEMENT

This Corner Record was prepared by me or under my direction in conformance with  
 the Land Surveyor's Act on AUGUST 12, 2010

Signed *Joel Garcia* P.L.S. or R.C.E. No.: LS 5285



### COUNTY SURVEYOR'S STATEMENT

This Corner Record was received AUGUST 18, 2010 and examined  
 and filed SEPTEMBER 7, 2010

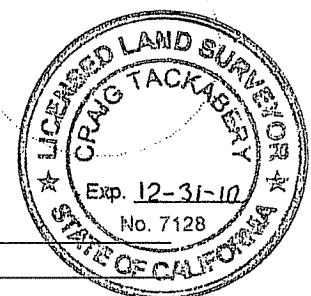
Signed *[Signature]* P.L.S. or R.C.E. No.: 7128

Title COUNTY SURVEYOR

County Surveyor's Comment \_\_\_\_\_

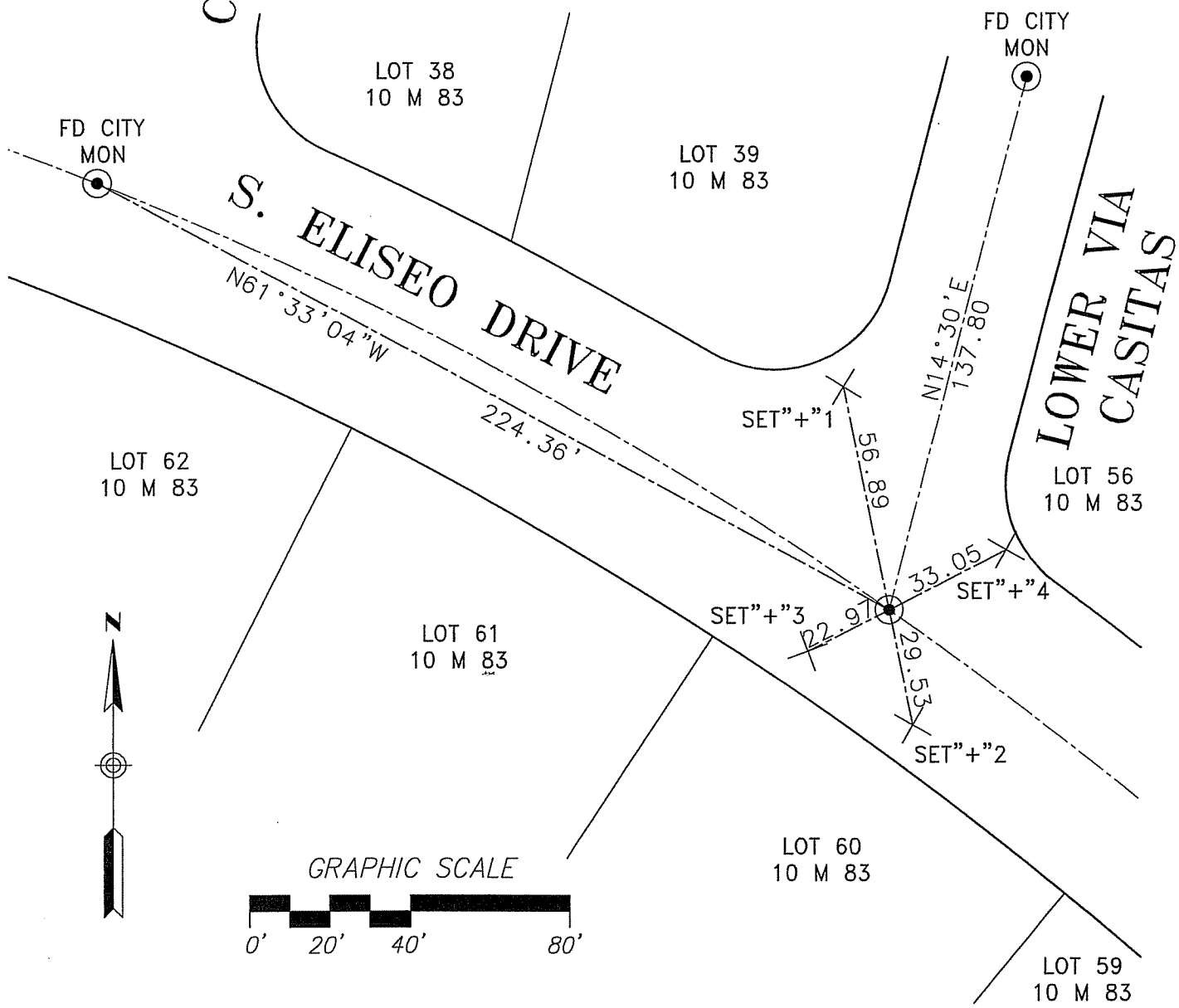
\_\_\_\_\_

\_\_\_\_\_



UPPER  
VIA  
CASITAS

BEARING: SET"+1-2 N11°40'34"W  
 BEARING: SET"+3-4 N63°04'18"E



BASIS OF BEARINGS

"BON AIR SUB. NO. EIGHT" (14 M 56)  
 MARIN COUNTY RECORDS

LEGEND

- "+" CUT CROSS IN CURB
- SRVY SPK SURVEY SPIKE
- FD FOUND
- MON MONUMENT

CORNER RECORD #6  
 STREET MONUMENTS- SOUTH ELISEO DRIVE  
 LARKSPUR, MARIN COUNTY, CALIFORNIA



**MARK THOMAS & COMPANY, INC.**  
 Providing Engineering, Surveying, and Planning Services  
 1243 Alpine Road  
 Walnut Creek, CA 94596  
 (925) 938-0383

DRAWN. BY <u>KW</u> CKD. BY <u>JG</u> DATE <u>08/09/10</u> SCALE <u>1"=40 FEET</u>	APPROVED ON <u>08/10/10</u> BY <u>J. Garcia</u> LS NO.5285 12/31/11	JOB NO. <b>58-0225B</b>	PAGE <b>2</b> OF <b>2</b>
---	---	----------------------------	------------------------------------