

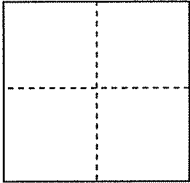
# CORNER RECORD

Document Number \_\_\_\_\_

City of LARKSPUR

County of MARIN, California

Brief Legal Description CENTERLINE MONUMENT, SOUTH ELISIO DRIVE (5)

	CORNER TYPE	COORDINATES(Optional)
	Government Corner <input type="checkbox"/> Control <input type="checkbox"/>	N. _____
	Meander <input type="checkbox"/> Property <input type="checkbox"/>	E. _____
	Rancho <input type="checkbox"/> Other <input checked="" type="checkbox"/>	Zone _____ NAD27 <input type="checkbox"/> NAD83 <input type="checkbox"/>
		NAD83 Epoch _____
		Elevation _____
		Vert. Datum: <input type="checkbox"/> NADV88 <input type="checkbox"/>
		Meas. Units: Metric <input type="checkbox"/> Imperial <input type="checkbox"/>

Date of Survey AUGUST 3, 2010

Corner- Left as found  Found and tagged  Established  Reestablished  Rebuilt

**Identification and type of corner found: Evidence used to identify or procedure used to establish or reestablish the corner:**

Standard street monument @ centerline intersection South Elisio and Upper Via Casitas. Monument was referenced with four cut "+"'s, measured angle and distance, as well as angle and distance ties to adjoining monuments.

SEE PLAT ON REVERSE SIDE

A description of the physical condition of the monument as found and as set or reset: Found tag in concrete, RE 1812,

Good condition

SEE PLAT ON REVERSE SIDE

### SURVEYOR'S STATEMENT

This Corner Record was prepared by me or under my direction in conformance with

the Land Surveyor's Act on AUGUST 12, 2010

Signed *Joel Garcia* P.L.S. or R.C.E. No.: LS 5285



### COUNTY SURVEYOR'S STATEMENT

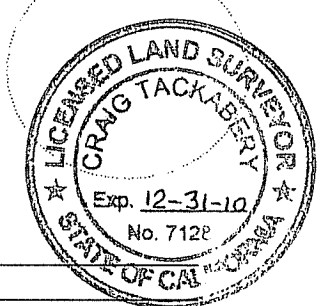
This Corner Record was received AUGUST 18, 2010 and examined

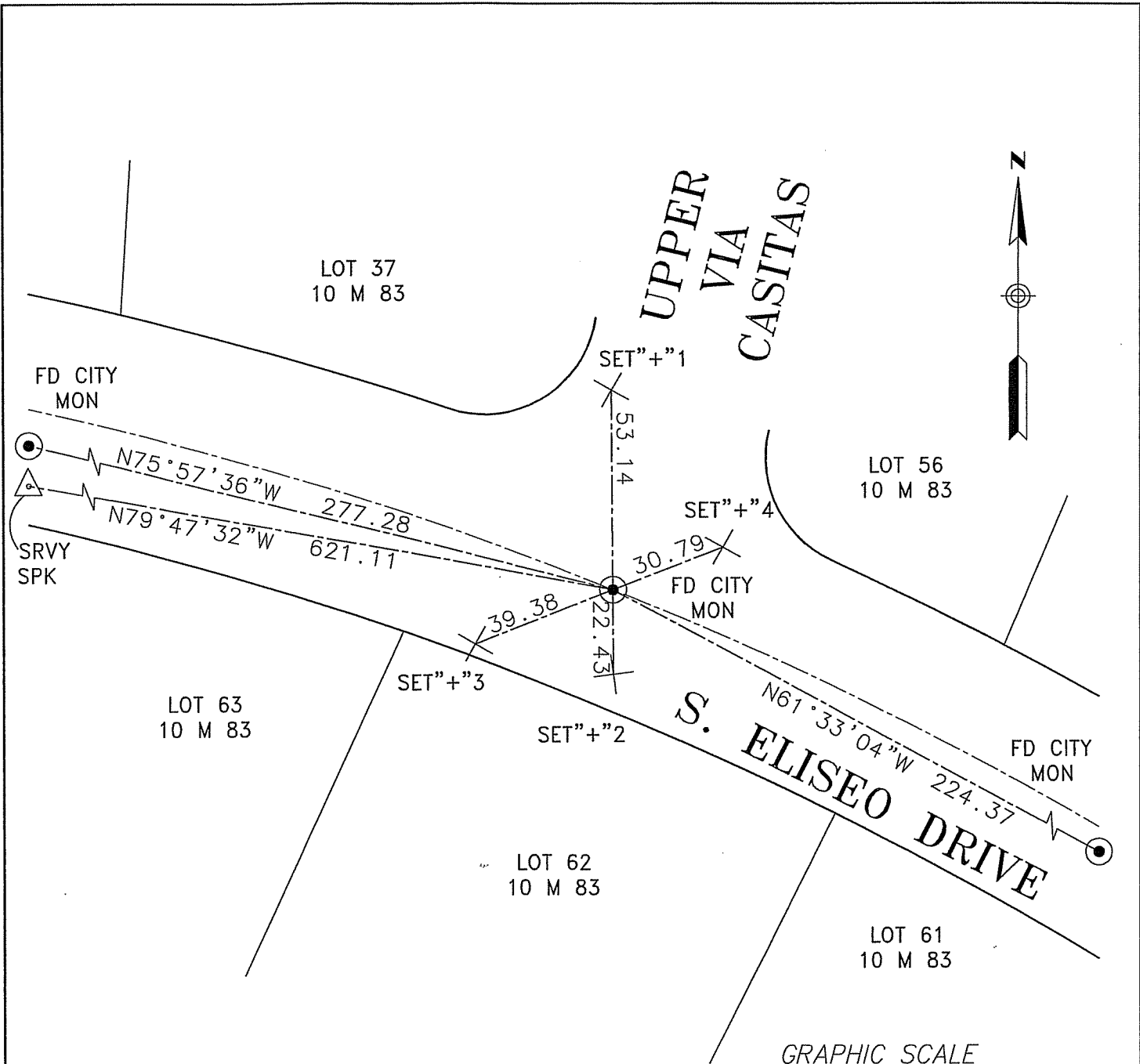
and filed SEPTEMBER 7, 2010

Signed *Craig Tackabery* P.L.S. or R.C.E. No.: 7128

Title COUNTY SURVEYOR

County Surveyor's Comment \_\_\_\_\_






BEARING: SET"+1-2 N00°18'39"W  
 BEARING: SET"+3-4 N68°26'10"E



BASIS OF BEARINGS  
 "BON AIR SUB. NO. EIGHT" (14 M 56)  
 MARIN COUNTY RECORDS

LEGEND

"+"	CUT CROSS IN CURB
SRVY SPK	SURVEY SPIKE
FD	FOUND
MON	MONUMENT

<b>CORNER RECORD #5</b> STREET MONUMENTS- SOUTH ELISEO DRIVE LARKSPUR, MARIN COUNTY, CALIFORNIA			
 <b>MARK THOMAS &amp; COMPANY, INC.</b> <i>Providing Engineering, Surveying, and Planning Services</i> 1243 Alpine Road Walnut Creek, CA 94596 (925) 938-0383			
DRAWN. BY <u>KW</u> CKD. BY <u>JG</u> DATE <u>08/09/10</u> SCALE <u>1"=40 FEET</u>	APPROVED ON <u>08/10/10</u> BY <u>J. Garcia</u>	JOB NO. <b>58-0225B</b>	PAGE <b>2</b> OF <b>2</b>
LS NO.5285 12/31/11			