

# CORNER RECORD

Agency Index CR22-107

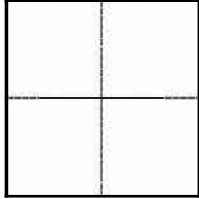
Document Number 022-050-23

City of LARKSPUR County of MARIN, California

Brief Legal Description APN: 022-050-23, 022-050-19, 022-050-18

**CORNER TYPE**

**COORDINATES (Optional)**



- Government Corner
- Meander
- Rancho
- Control
- Property
- Other

Date of Survey \_\_\_\_\_

N. \_\_\_\_\_ E. \_\_\_\_\_

Elevation \_\_\_\_\_

Units  Metric  U.S. Survey Foot

Horizontal Datum \_\_\_\_\_

Zone \_\_\_\_\_ Epoch Date \_\_\_\_\_

Vertical Datum \_\_\_\_\_

Complies with Public Resources Code §§8801-8819

Complies with Public Resources Code §§8890-8902

PLS Act Ref.:  8765(d)  8771  8773  Other:

Corner/Monument:  Left as found  Established  Rebuilt  Pre-Construction

Found and tagged  Reestablished  Referenced  Post-Construction

Narrative of corner identified and monument as found, set, reset, replaced, or removed:

See sheet #2 for description(s):

**FOUND CENTERLINE MONUMENTS, 2" BRASS DISK IN MONUMENT WELLS, ON DRAKES LANDING ROAD AS SHOWN ON THE MAP OF BON AIR EXPANSION, RECORDED IN BOOK 19 OF PARCEL MAPS AT PAGE 21, MARIN COUNTY RECORDS. SET IRON PIPE MONUMENTS PER "DETAIL D", AS SHOWN ON THE MAP OF DRAKES LANDING - PHASE C RECORDED IN BOOK 19 OF PARCEL MAPS AT PAGE 63, MARIN COUNTY RECORDS**

**SURVEYOR'S STATEMENT**

This Corner Record was prepared by me or under my direction in conformance with

the Professional Land Surveyors' Act on December 14, 2022

Signed *Steven J. Klein* P.L.S. or  No. 8155



**COUNTY SURVEYOR'S STATEMENT**

This Corner Record was received December 14, 2022

and examined and filed December 14, 2022

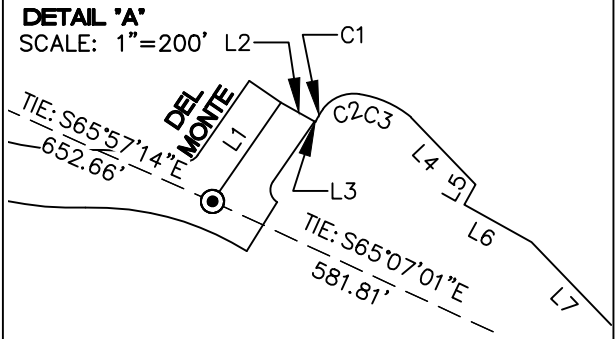
Signed *T.W. Park* P.L.S.  No. 8176

Title County Surveyor

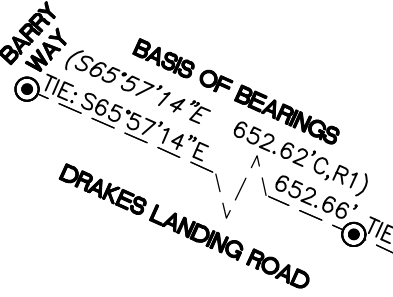
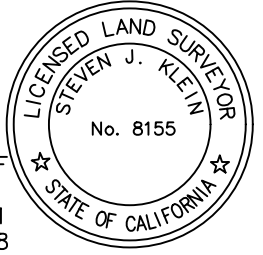


**County Surveyor's Comment**

It is the opinion of the County Surveyor that pursuant to the requirements of the Professional Land Surveyor's Act, Section 8765(d), this corner record does not demonstrate that sufficient monumentation was found to establish the precise location of the property corners and set monuments shown hereon. SEE NOTE ON SHEET 2.



NOTE: A DILIGENT SEARCH WAS MADE FOR THE MONUMENTS SHOWN ON R2 LABELED "TO BE SET", TO THE SOUTH AND SOUTHWEST OF THE SUBJECT BOUNDARY LINE, NONE WERE FOUND. IT IS BELIEVED THAT THEY WERE NEVER SET.



SEE DETAIL "A" THIS SHEET

Line Table		
Line #	Direction	Length
L1	N34°45'00"E	125.19'
L2	S60°54'15"E	40.20'
L3	S60°54'15"E	1.12'
L4	N44°00'00"W	97.00'
L5	N29°05'45"E	24.31'
L6	N60°54'15"W	80.00'
L7	N44°00'00"W	281.45'

LANDS OF REEP-OFC DRAKES LANDING CA LLC DN: 2013-0075413 APN: 022-050-17

MAP OF BON AIR EXPANSION 19 PM 21

LANDS OF CITY OF LARKSPUR DN: 1985-048961 APN: 022-050-18

MAP OF DRAKES LANDING - PHASE C 19 PM 63

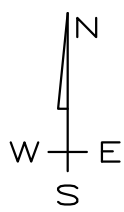
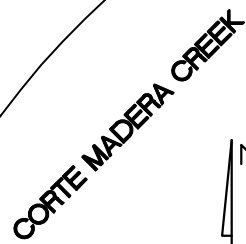
LANDS OF CITY OF LARKSPUR DN: 1985-044190 APN: 022-050-23

LANDS OF REEP-OFC DRAKES LANDING CA LLC DN: 2013-0075413 APN: 022-050-22

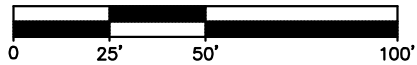
LANDS OF CITY OF LARKSPUR DN: 1985-048961 APN: 022-050-19

Curve Table			
Curve #	Length	Radius	Delta
C3	59.64'	110.00'	31°03'55"
C2	42.71'	40.00'	61°10'34"
C1	15.50'	65.00'	13°39'46"

N87°00'00"E 9.45'R2&M



SCALE: 1" = 50'



**LEGEND**

- BOUNDARY LINE
- ADJOINING BOUNDARY LINE
- BOUNDARY TIE
- FORMER BOUNDARY LINE
- SET 1/2" IRON PIPE, TAGGED PLS 8155
- FOUND 2" BRASS DISK IN MONUMENT WELL "RCE 9788" WITH PUNCH
- DN DOCUMENT NUMBER
- R1 MAP OF BON AIR EXPANSION 19 RM 21
- R2 MAP OF DRAKES LANDNG - PHASE C 19 RM 63



**DVC GROUP INC.**

CIVIL ENGINEERING ♦ LAND PLANNING  
 513 CENTER STREET  
 HEALDSBURG, CA 95448  
 (707) 395-0968