

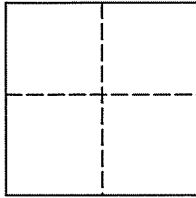
Job #: 03-744

CORNER RECORD

Document Number Assessor's Map Bk. 22 Page 46

City of Larkspur, County of Marin, California

Brief Legal Description: The south, southeasterly line of Spyglass Hill Condominiums as shown on the "Condominium Map of Brandywine", filed in Volume 16 of Maps at Page 5, Marin County Records coincident with the north, northeasterly right of way of Via Casitas



CORNER TYPE

Government Corner Control
 Meander Property
 Rancho Other
 Date of Survey 12/11/2003

COORDINATES (Optional)

N _____
 E _____
 Zone _____ NAD27 NAD83
 NAD 83 Epoch _____
 Elev. _____
 Vert. Datum: NGVD29 NAVD88
 Meas. Units: Metric Imperial

Corner - Left as found Found and tagged Established Reestablished Rebuilt

Identification and type of corner found: Evidence used to identify or procedure used to establish or reestablish the corner:

Right of Way established by locating and verifying position of centerline monuments along Via Casitas as shown on Condominium Map of Brandywine, filed in Volume 16 of Maps at Page 5, Marin County Records

A description of the physical condition of the monument as found and as set or reset:

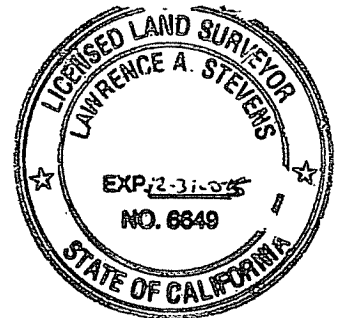
As indicated on plat (see reverse)

SURVEYOR'S STATEMENT

This Corner Record was prepared by me or under my direction in conformance with

The Land Surveyor's Act on December 11, 2003

Signed [Signature] P.L.S. 6649



COUNTY SURVEYOR'S STATEMENT

This Corner Record was received DECEMBER 24, 2003

and examined and filed DECEMBER 30, 2003

Signed [Signature] P.L.S. or P.C.E. No. 7128

Title COUNTY SURVEYOR



County Surveyors' Comment _____

All distances shown are in feet and decimals thereof

BASIS OF BEARINGS

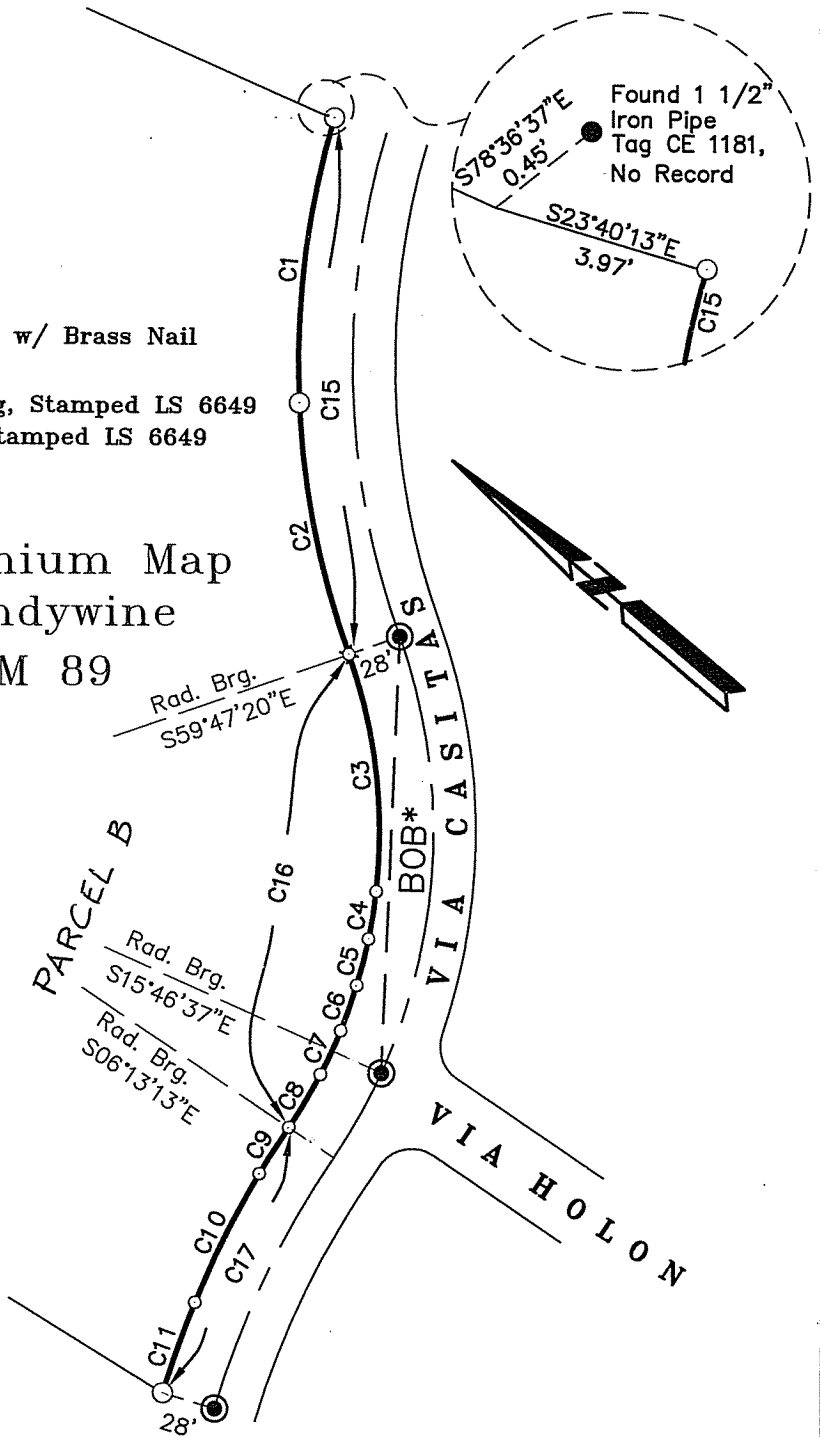
*BOB - Basis of Bearings is N52°13'02"E between found centerline monuments per Condominium Map of Brandywine filed in Volume 16, Page 89, Marin County Records and shown hereon.

LEGEND

- Found Standard Street Monument w/ Brass Nail
 - Set Nail & Tag Stamped LS 6649
 - Set 3/4" Iron Pipe & Plastic Plug, Stamped LS 6649
 - ⊠ Set 1/2" Rebar & Plastic Plug, Stamped LS 6649
- Rad. Brg. Radial Bearing

Condominium Map
of Brandywine
16 RM 89

CURVE TABLE			
CURVE	LENGTH	RADIUS	DELTA
C1	150.00	450.00	19°05'56"
C2	133.68	450.00	17°01'11"
C3	125.01	275.00	26°02'41"
C4	25.00	275.00	5°12'33"
C5	25.00	275.00	5°12'33"
C6	25.00	275.00	5°12'32"
C7	24.99	275.00	5°12'23"
C8	32.11	275.00	6°41'25"
C9	28.49	508.00	3°12'46"
C10	75.00	508.00	8°27'32"
C11	50.00	508.00	5°38'25"
C15	283.68	450.00	36°07'07"
C16	257.11	275.00	53°34'07"
C17	153.49	508.00	17°18'43"



**Lands of
Spyglass Hill Property
Owners Association**

Condominium Map of Brandywine, Volume 16 of Maps, Page 5
Right of Way along Via Casitas

Larkspur Marin County California

Scale: 1" = 100' December 2003

L.A. Stevens & Associates, Inc.

Professional Land Surveyors * (415) 382-7713
7 Commercial Blvd., Suite 1. * Novato, CA 94949

Job # 03-744

Lawrence A. Stevens, PLS 6649
my license expires 12/31/05