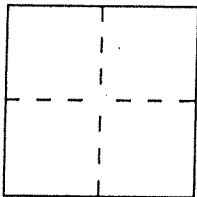


CORNER RECORD

Document Number 021-271-52

City of Larkspur County of Marin, California

Brief Legal Description 311 Wilson Way, Lot 24 of 10 RM 119



CORNER TYPE

Government Corner Control
 Meander Property
 Rancho Other
 Date of Survey _____

COORDINATES (Optional)

N. _____
 E. _____
 Zone _____ Datum _____
 Elev. _____

Corner — Left as found Found and tagged Established Reestablished Rebuilt

Identification and type of corner found: Evidence used to identify or procedure used to establish or reestablish the corner:

Found standard street monuments in Polhemus Way.

A description of the physical condition of the monument as found and as set or reset: I set 1/2" bar

I and caps LS 5290 as shown on the attached "Sketch Map" (over) in April 1987. In March 2008 I observed that my most easterly corner was still in place, and that a new corner (LS 5065) was at the most southerly corner of Lot 24.

SURVEYOR'S STATEMENT

This Corner Record was prepared by me or under my direction in conformance with

the Land Surveyors' Act on June 9, 2008

Signed David Harp L.S. or R.C.E. Number LS 5290

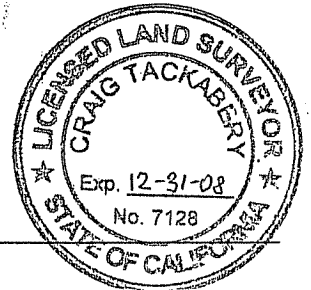


COUNTY SURVEYOR'S STATEMENT

This Corner Record was received JUNE 12, 2008 and examined

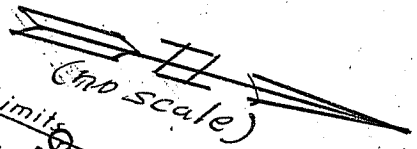
and filed JUNE 16, 2008

Signed _____ Title COUNTY SURVEYOR

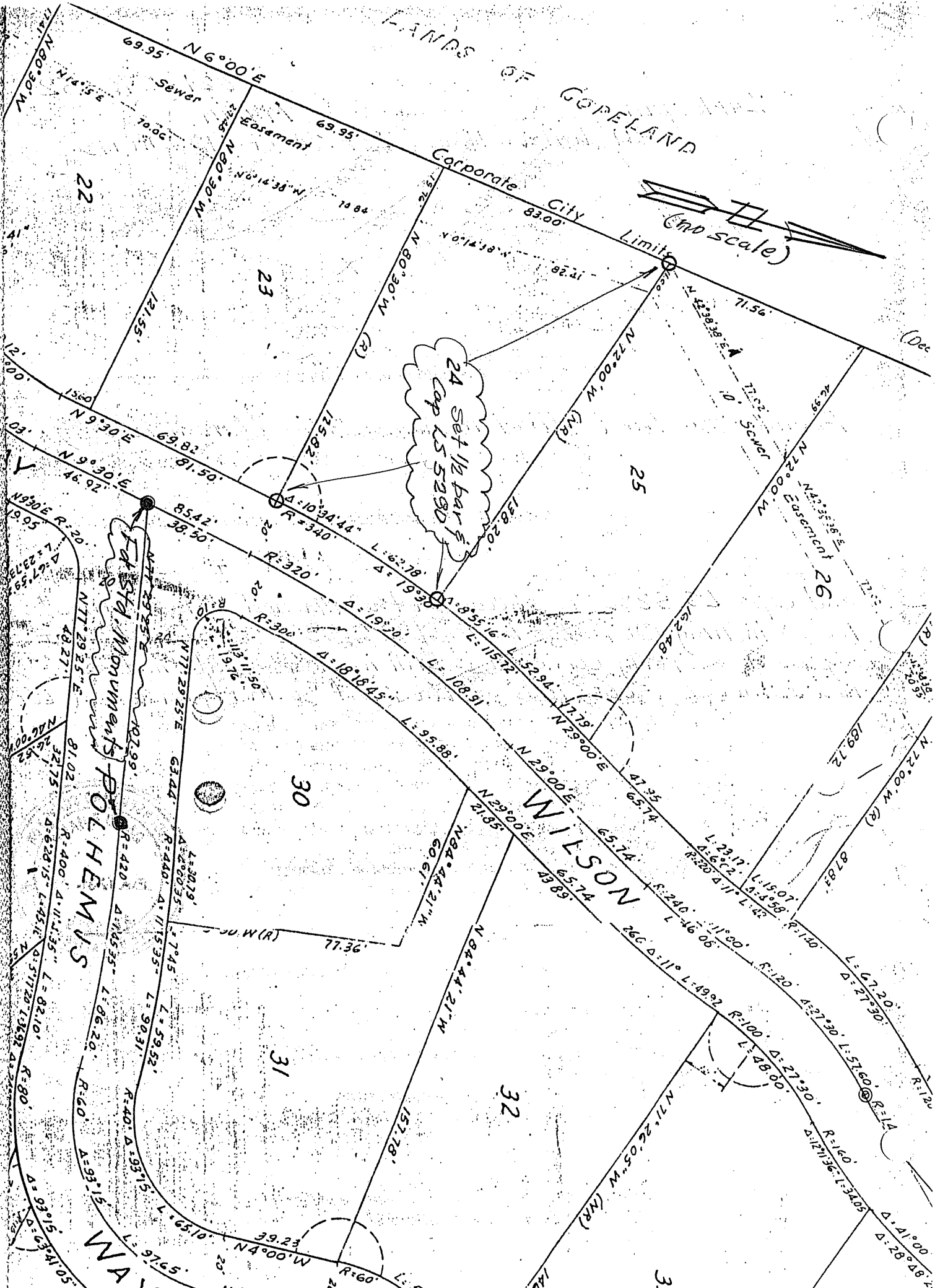


County Surveyor's Comment _____

LANDS OF GOPELAND



Corporate City Limits



SKETCH MAP #11

Fastd. Monuments BOLHEMIS

WILSON

WAY

33