

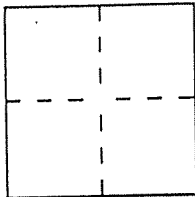
CORNER RECORD

Document Number AP# 21-271-21

City of Larkspur

County of Marin, California

Brief Legal Description LOT 50 OF 10 RM 119



CORNER TYPE

- Government Corner
- Meander
- Rancho
- Date of Survey _____
- Control
- Property
- Other

COORDINATES (Optional)

N. _____
 E. _____
 Zone _____ Datum _____
 Elev. _____

Corner — Left as found Found and tagged Established Reestablished Rebuilt

Identification and type of corner found: Evidence used to identify or procedure used to establish or reestablish the corner:

Found Standard Street Monuments in Wilson Way.

A description of the physical condition of the monument as found and as set or reset:

Set 1/2 bar (iron) and plastic cap embossed LS. 5290
(See Sketch Map (over) for location)

SURVEYOR'S STATEMENT

This Corner Record was prepared by me or under my direction in conformance with the Land Surveyors' Act on November 13, 2003

Signed David Hays L.S. or R.C.E. Number LS 5290



COUNTY SURVEYOR'S STATEMENT

This Corner Record was received NOVEMBER 14, 2003 and examined and filed NOVEMBER 25, 2003.

Signed Ce Title COUNTY SURVEYOR



County Surveyor's Comment _____

119

See Sheet 3

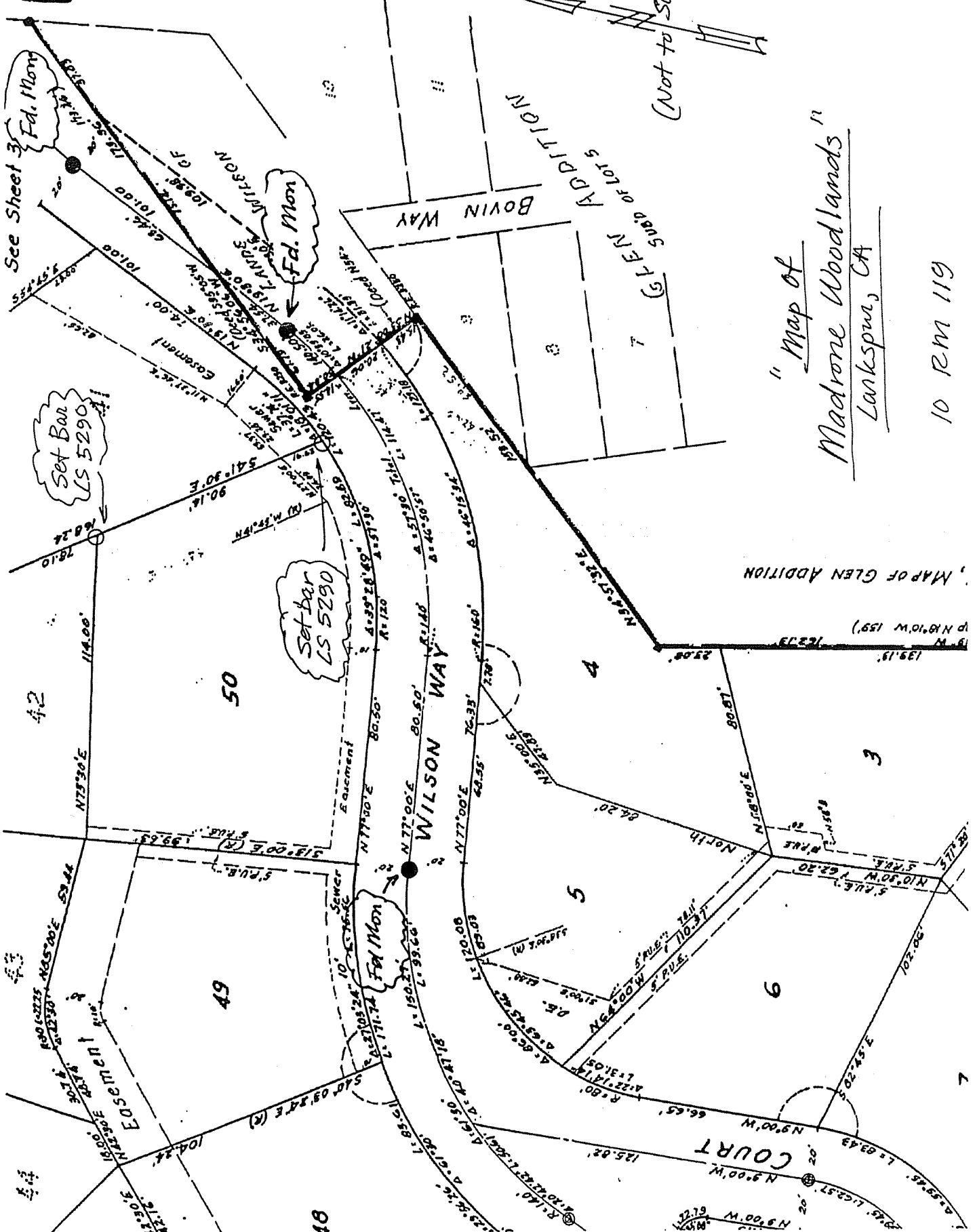
Fd. Mon

Set Bar LS 5290

Set Bar LS 5290

Fd. Mon

119



"Map of
Madrone Woodlands"
Larkspur, CA

10 RM 119

MAP OF GLEN ADDITION