

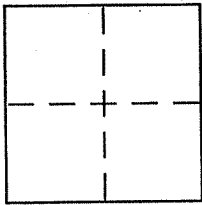
**CORNER RECORD**

Document Number APN: 021-223-46

City of Larkspur

County of Marin, California

Brief Legal Description Portion of Lots 145 and 146 per 34 Surveys 41



**CORNER TYPE**

Government Corner  Control   
Meander  Property   
Rancho  Other   
Date of Survey 8-20-12

**COORDINATES (Optional)**

N. \_\_\_\_\_  
E. \_\_\_\_\_  
Zone \_\_\_\_\_ NAD27  NAD83   
NAD83 Epoch \_\_\_\_\_  
Elev. \_\_\_\_\_  
Vert. Datum: NGVD29  NAVD88   
Meas. Units: Metric  Imperial

Corner - Left as found  Found and tagged  Established  Reestablished  Rebuilt

Identification and type of corner found: Evidence used to identify or procedure used to establish or reestablish the corner:

Subject property is shown on a map of record and perpetuated by both a record of survey and corner record.

A description of the physical condition of the monument as found and as set or reset: \_\_\_\_\_

See page 2 of 2.

**SURVEYOR'S STATEMENT**

This Corner Record was prepared by me or under my direction in conformance with the Land Surveyor's Act on 9/6 2012

Signed [Signature] P.L.S or R.C.E. No. 6784



**COUNTY SURVEYOR'S STATEMENT**

This Corner Record was received SEPTEMBER 26, 2012

and examined and filed OCTOBER 23, 2012

Signed [Signature] P.L.S or R.C.E. No. 7128

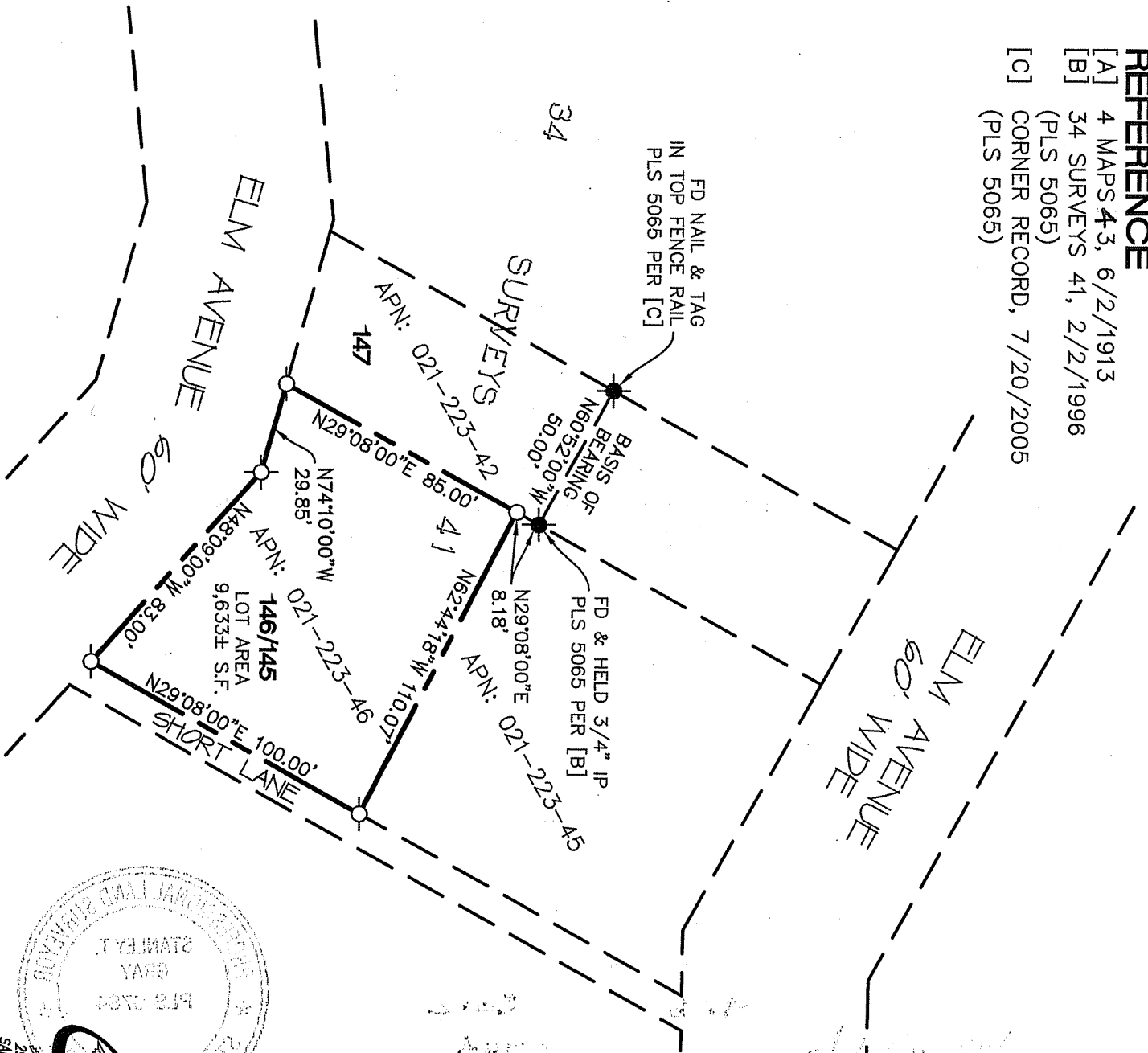
Title COUNTY SURVEYOR



County Surveyor's Comment \_\_\_\_\_

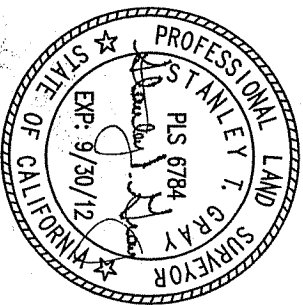
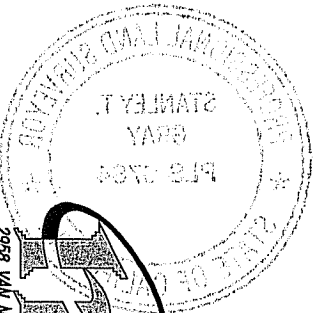
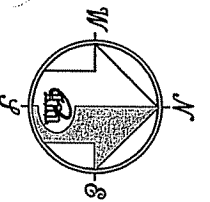
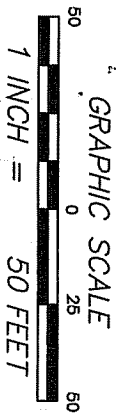
**REFERENCE**

- [A] 4 MAPS 43, 6/2/1913
- [B] 34 SURVEYS 41, 2/2/1996  
(PLS 5065)
- [C] CORNER RECORD, 7/20/2005  
(PLS 5065)



**LEGEND**

- FOUND AS NOTED PER 34 SURVEYS 41
  - SET SHINNER PLS 6784
  - SET 5/8" REBAR WITH CAP, PLS 6784
  - SET TACK WITH BRASS WASHER PLS 6784 IN TOP FENCE RAIL
  - FD FOUND
  - IP IRON PIPE
- RECORD=MEASURED UNLESS OTHERWISE NOTED



CORNER RECORD

**MERIDIAN SURVEYING ENGINEERING, INC.**

2958 VAN NESS AVENUE  
SAN FRANCISCO, CA 94109  
(415) 440-4131  
info@meridiansurvey.com

12076  
777 GRAND AVENUE, SUITE 202  
SAN RAFAEL, CA 94901  
(415) 466-6450