

CORNER RECORD

Agency Index

20-070

Document Number

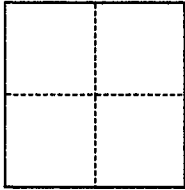
021-223-44

City of NOVATO County of MARIN, California

Brief Legal Description A PORTION OF LOT 139 & 140 PER VOLUME 4 OF MAPS, AT PAGE 43, MARIN COUNTY RECORDS

CORNER TYPE

COORDINATES (Optional)



- Government Corner
- Meander
- Rancho
- Control
- Property
- Other

Date of Survey July 7, 2020

N. _____ E. _____

Elevation _____

Units Metric U.S. Survey Foot

Horizontal Datum _____

Zone _____ Epoch Date _____

Vertical Datum _____

Complies with Public Resources Code §§8801-8819

Complies with Public Resources Code §§8890-8902

PLS Act Ref.: 8765(d) 8771 8773 Other:

Corner/Monument: Left as found Established Rebuilt Pre-Construction
 Found and tagged Reestablished Referenced Post-Construction

Narrative of corner identified and monument as found, set, reset, replaced, or removed:

See sheet #2 for description(s):

FOUND 3/4" IRON PIPES RCE 18221 PER BOOK 2000 OF SURVEY MAPS PAGE 43 MARIN COUNTY RECORDS. SET 5/8 REBAR WITH 1 1/2" STEEL CAP TAGGED PLS 9568 AS SHOWN ON SHEET 2.

SURVEYOR'S STATEMENT

This Corner Record was prepared by me or under my direction in conformance with

the Professional Land Surveyors' Act on July 21, 2020

Signed [Signature] P.L.S. or R.C.E. No. PLS 9568



COUNTY SURVEYOR'S STATEMENT

This Corner Record was received 08/03/2020

and examined and filed 09/16/2020

Signed [Signature] P.L.S. or R.C.E. No. 9292

Title DEPUTY C.S.

County Surveyor's Comment



REFERENCE LIST

R1 BOOK 2000 OF SURVEY MAPS
PAGE 43 MARIN COUNTY RECORDS

NOTE: ALL DIMENSIONS ARE
RECORD AND MEASURED PER R1

SYMBOL LEGEND

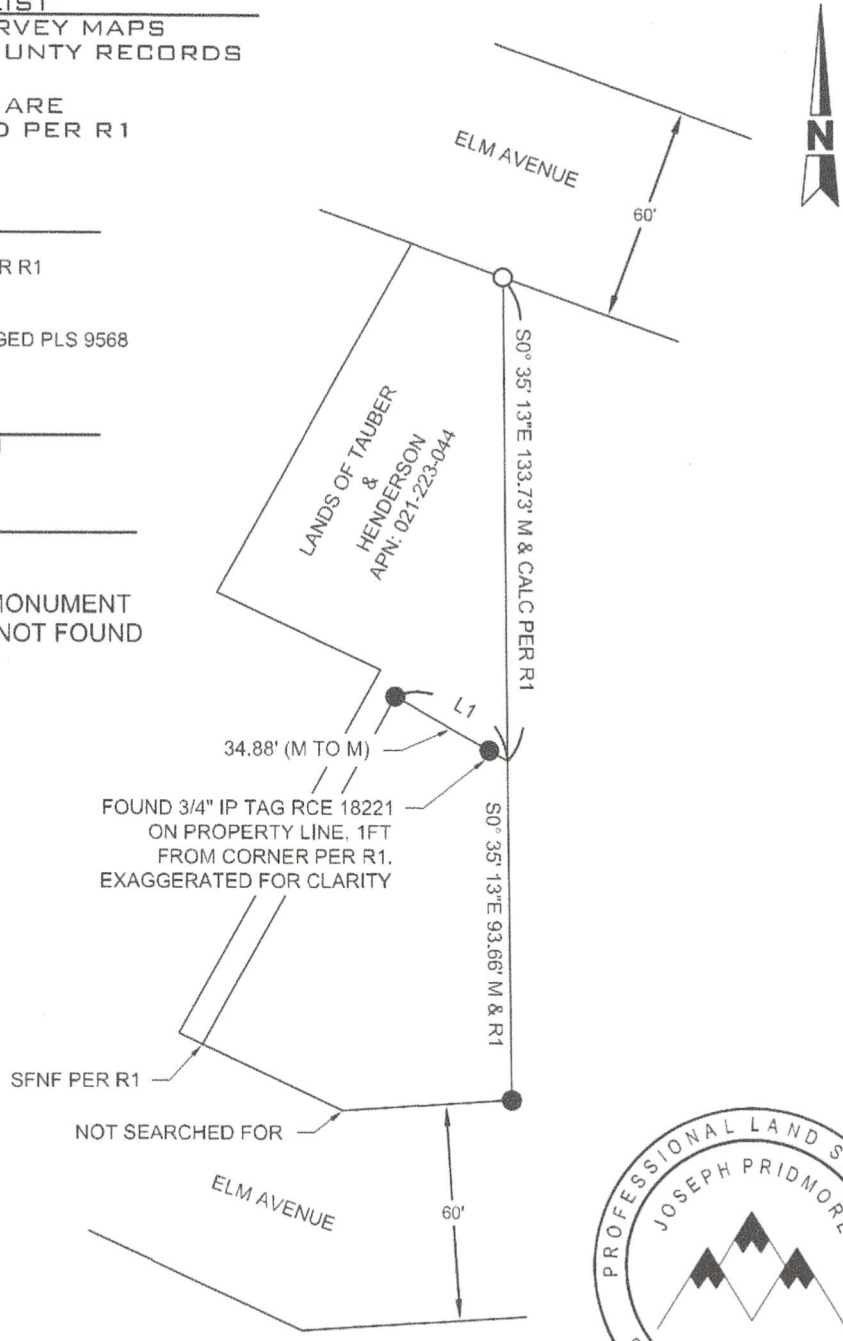
- FOUND 3/4" IP TAG RCE 18221 PER R1
UNLESS OTHERWISE NOTED
- SET MONUMENT 5/8 REBAR TAGGED PLS 9568

LINE TABLE

L1 N 60° 47' 36" W 35.88' M & R1

ABBREVIATIONS

IP IRON PIPE
M MEASURED
(M TO M) MONUMENT TO MONUMENT
SFNF SEARCHED FOR NOT FOUND

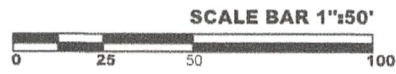


FOUND 3/4" IP TAG RCE 18221
ON PROPERTY LINE, 1FT
FROM CORNER PER R1.
EXAGGERATED FOR CLARITY


SFNF PER R1
NOT SEARCHED FOR



Joe Pridmore



SURVEY DATE: 07/07/20

<p>SHEET:</p> <p style="font-size: 48pt; text-align: center;">2</p> <p style="text-align: right;">OF 2</p>	<p style="text-align: center;">CORNER RECORD MAP</p>	<p>PREPARED BY:</p> <p style="text-align: center;">JOE PRIDMORE, PLS 1998 CAPELL VALLEY ROAD NAPA, CA 94558 (707) 256-5001 JOE@PRIDMOREANDCO.COM PRIDMOREANDCO.COM</p> <p>PROJECT #: 00030</p>	 <p style="text-align: center;">PRIDMORE & COMPANY</p>
-------------------------------------------------------------------------------------------------------------------	----------------------------------------------------------	--------------------------------------------------------------------------------------------------------------------------------------------------------------------------------------------------------------------	-------------------------------------------------------------------------------------------------------------------------------------------------