

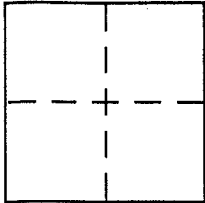
CORNER RECORD

Document Number A.P.N. 021-223-14

City of LARKSPUR

County of MARIN, California

Brief Legal Description PORTION OF LOT 148 PER 4 R.M. 43 (REF: 34 O.S. 41)



CORNER TYPE

Government Corner Control
Meander Property
Rancho Other
Date of Survey 5-11-05

COORDINATES (Optional)

N. _____
E. _____
Zone _____ NAD27 NAD83
NAD83 Epoch _____
Elev. _____
Vert. Datum: NGVD29 NAVD88
Meas. Units: Metric Imperial

Corner - Left as found Found and tagged Established Reestablished Rebuilt

Identification and type of corner found: Evidence used to identify or procedure used to establish or reestablish the corner:

SET POINTS, FOUND POINTS FOR
BOUNDARIES DEFINED BY OUR
SURVEY RECORDED AS 34 O.S. 41
=SEE OVER=

A description of the physical condition of the monument as found and as set or reset: _____

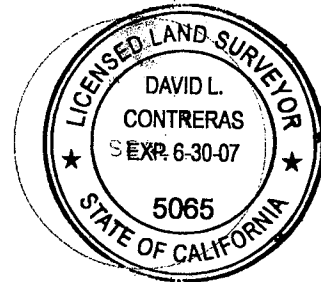
=SEE OVER=

SURVEYOR'S STATEMENT

This Corner Record was prepared by me or under my direction in conformance with

the Land Surveyor's Act on MAY 20, 2005.

Signed David Contreras P.L.S. or R.C.E. No. 5065



COUNTY SURVEYOR'S STATEMENT

This Corner Record was received MAY 24, 2005

and examined and filed JULY 20, 2005

Signed _____ P.L.S. or R.C.E. No. 7128

Title COUNTY SURVEYOR

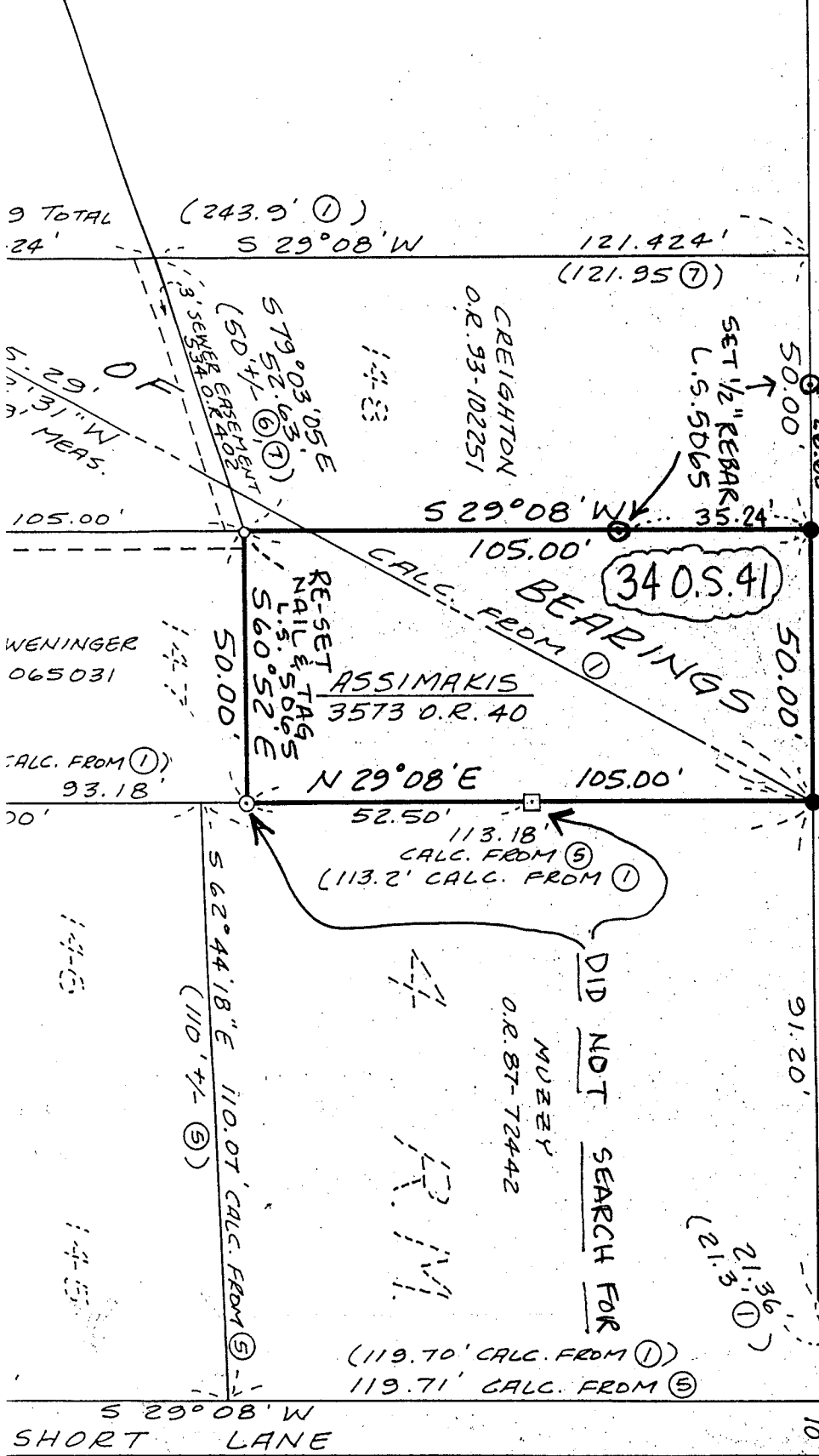


County Surveyor's Comment _____

ELM AVENUE

(60' WIDE)

1" = 30'



9 TOTAL
24'

(243.9' ①)
S 29° 08' W

121.424'
(121.95 ⑦)

N 60° 52' W

3' SEWER
EREMENT
(50' +/-)
579° 03' 05" E
52.52' (⑥)
52.52' (⑦)

CREIGHTON
O.R. 93-102251

SET 1/2" REBAR'S
L.S. 5065

50.00'
26.68'

105.00'

S 29° 08' W

340.5.41
BEARINGS
CALC. FROM ①

FOUND 3/4" I.P.
L.S. 5065

WENINGER
065031

RE-SET
NAIL & TAGS
L.S. 5065
560.52' E

ASSIMAKIS
3573 O.R. 40

CALC. FROM ①
93.18'

N 29° 08' E

105.00'

52.50'
113.18'
CALC. FROM ⑤
(113.2' CALC. FROM ①)

FOUND
HEAD (1/2" I.P. L.S. 4402)

20'

S 62° 44' 18" E
110.07' CALC. FROM ⑤
(110' +/-) ⑤

DID NOT SEARCH FOR
MUZZY
O.R. 87-72442

91.20'

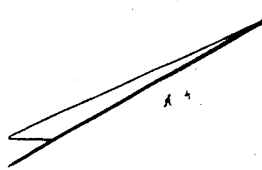
(119.70' CALC. FROM ①)
119.71' CALC. FROM ⑤

(21.36'
21.3'
①)

S 29° 08' W
SHORT LANE

N 89° 09' W

NOT
FOUND



43