

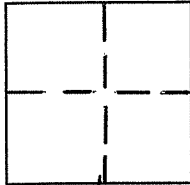
# CORNER RECORD

APN 021-211-07

Document No. 5-Maps-88

City of Larkspur County of Marin, California

Brief Legal Description Lot 6, Map of Heather Gardens; 5 R.M. 88



### CORNER TYPE

Government Corner  Control   
 Meander  Property   
 Rancho  Other   
 Date of Survey October 19, 2001

### COORDINATES (Optional)

N. \_\_\_\_\_  
 E. \_\_\_\_\_  
 Zone \_\_\_\_\_ Datum \_\_\_\_\_  
 Elev. \_\_\_\_\_

Corner- Left as found  Found and tagged  Established  Reestablished  Rebuilt

Identification and type of corner found: Evidence used to identify or procedure to establish or reestablish the corner: Established property corners per found property corners along the southerly property line of Lot 6 as shown herein sht. 2 and per "Map of Heather Gardens", Recorded in book 5 of Maps Page 88, County of Marin.

A description of the physical condition of the monument as found and as set or reset: Set 3/4" iron pipe w/ plastic cap, LS 5461 at beginning of curve (20' radius) on Heather Way, set nail & tag, LS 5461 in concrete driveway at end of curve (20' radius) on Garden Wy., and set nail & tag, LS 5461 in 4x4 fence post at northwest corner, on Lot 6, 5 R.M. 88, as shown on herein sheet 2.

### SURVEYOR'S STATEMENT

This Corner Record was prepared by me or under my direction in conformance with the Land Surveyors Act on October 26, 2001.

Signed David W. Keane PLS Number 5461

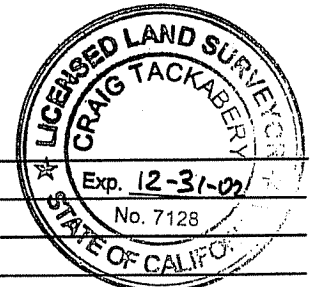


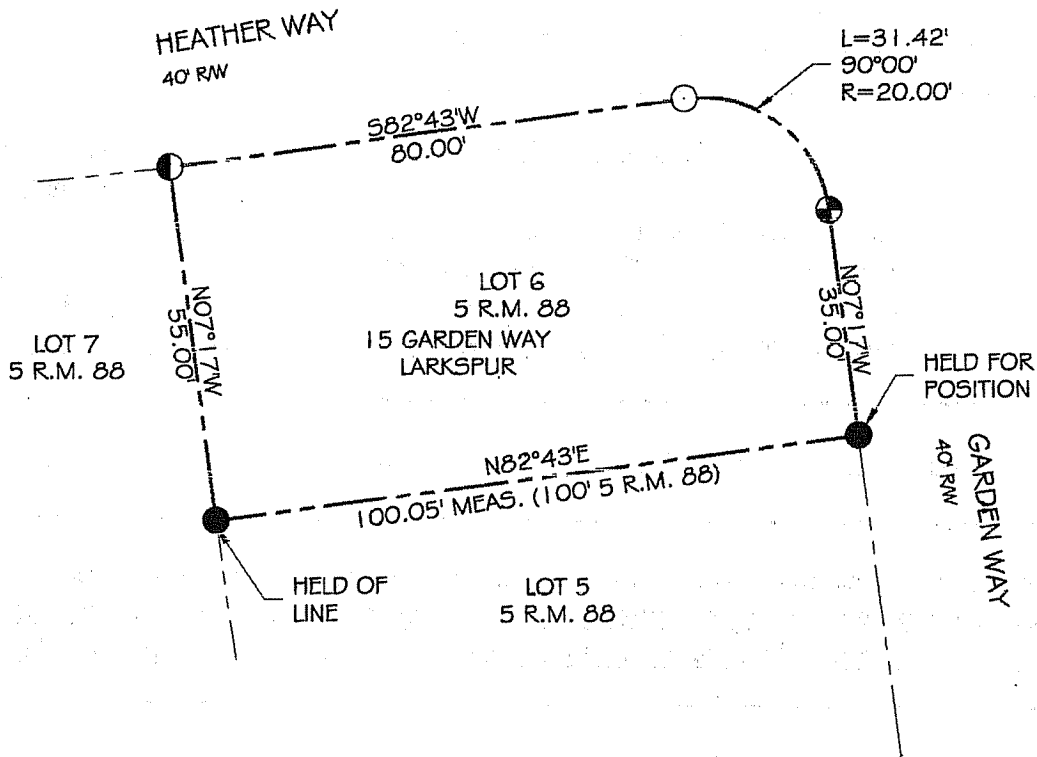
### COUNTY SURVEYOR'S STATEMENT

This Corner Record was received NOVEMBER 1, 2001 and examined and filed NOVEMBER 5, 2001.

Signed \_\_\_\_\_ Title DEPUTY

County Surveyor's Comments \_\_\_\_\_





LEGEND:

- FOUND 1/2" RE-BAR
- SET 3/4" IRON PIPE W/ PL. CAP LS 546 I
- ⊙ SET NAIL & TAG LS 546 I IN 4x4 FENCE POST
- ⊕ SET NAIL & TAG IN CONC. DRIVEWAY

NOTE:

1. ALL DIMENSIONS SHOWN HEREIN ARE PER 5 R.M. 88 UNLESS OTHERWISE NOTED.
2. ALL DISTANCES AND DIMENSIONS ARE IN FEET AND DECIMALS THEREOF.
3. EASEMENTS IF ANY ARE NOT SHOWN.

APN. 021-211-07.

10-01-26 DATE: 10/26/01

SHEET 2 OF 2

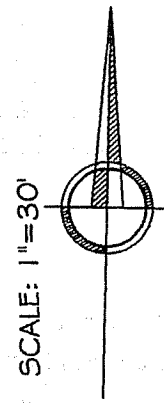


EXHIBIT "A"

**BRACKEN & KEANE**

Civil Engineers & Land Surveyors

5710 Paradise Drive, Ste. 8

Corte Madera, CA 94925

tel: (415) 927-8801 fax: (415) 927-8803