

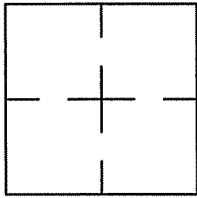
CORNER RECORD

Document Number APN 21-202-11

City of LARKSPUR

County of MARIN, California

Brief Legal Description LOT 119 AS SHOWN ON MAP OF HEATHER GARDENS UNIT TWO, FILED IN BOOK 5 OF MAPS, PAGE 93, MARIN COUNTY RECORDS



CORNER TYPE

Government Corner Control
Meander Property
Rancho Other
Date of Survey April 7, 2006

COORDINATES (Optional)

N. _____
E. _____
Zone _____ Datum _____
Elev. _____
Vert. Datum: NGVD29 NAVD88
Meas. Units: Metric Imperial

Corner — Left as found Found and tagged Established Reestablished Rebuilt

Identification and type of corner found: Evidence used to identify or procedure used to establish or reestablish the corner: Found 1" iron pipe monuments along the southerly side of Liberty Street, as shown on Map of Heather Gardens Unit Two, were occupied and record map angles and distances were held in order to reestablish the property corners for Lot 119.

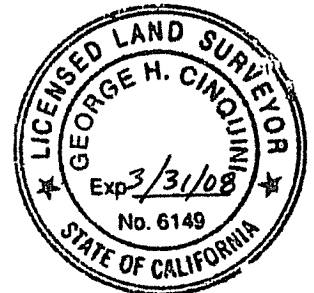
A description of the physical condition of the monument as found and as set or reset: The 1" iron pipes were found along the southerly side of Liberty Street were undisturbed and in good condition.
1/2" iron pipes tagged LS 6149 were set at record positions at the street side. Nails with brass washers tagged LS 6149 were set at record positions at the rear lot corners.

SURVEYOR'S STATEMENT

This Corner Record was prepared by me or under my direction in conformance with

the Land Surveyor's Act on April 12, 2006

Signed George H. Cinquini (P.L.S. or R.C.E. No. 6149)



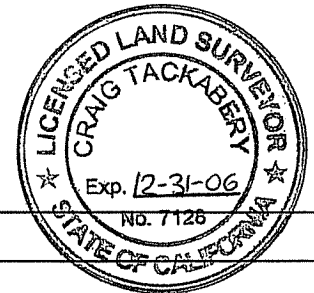
COUNTY SURVEYOR'S STATEMENT

This Corner Record was received APRIL 19, 2006

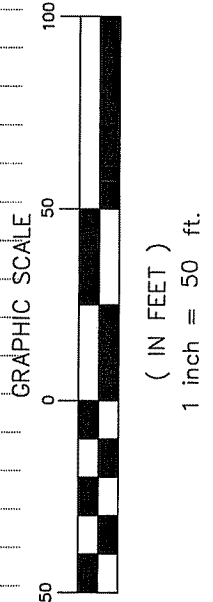
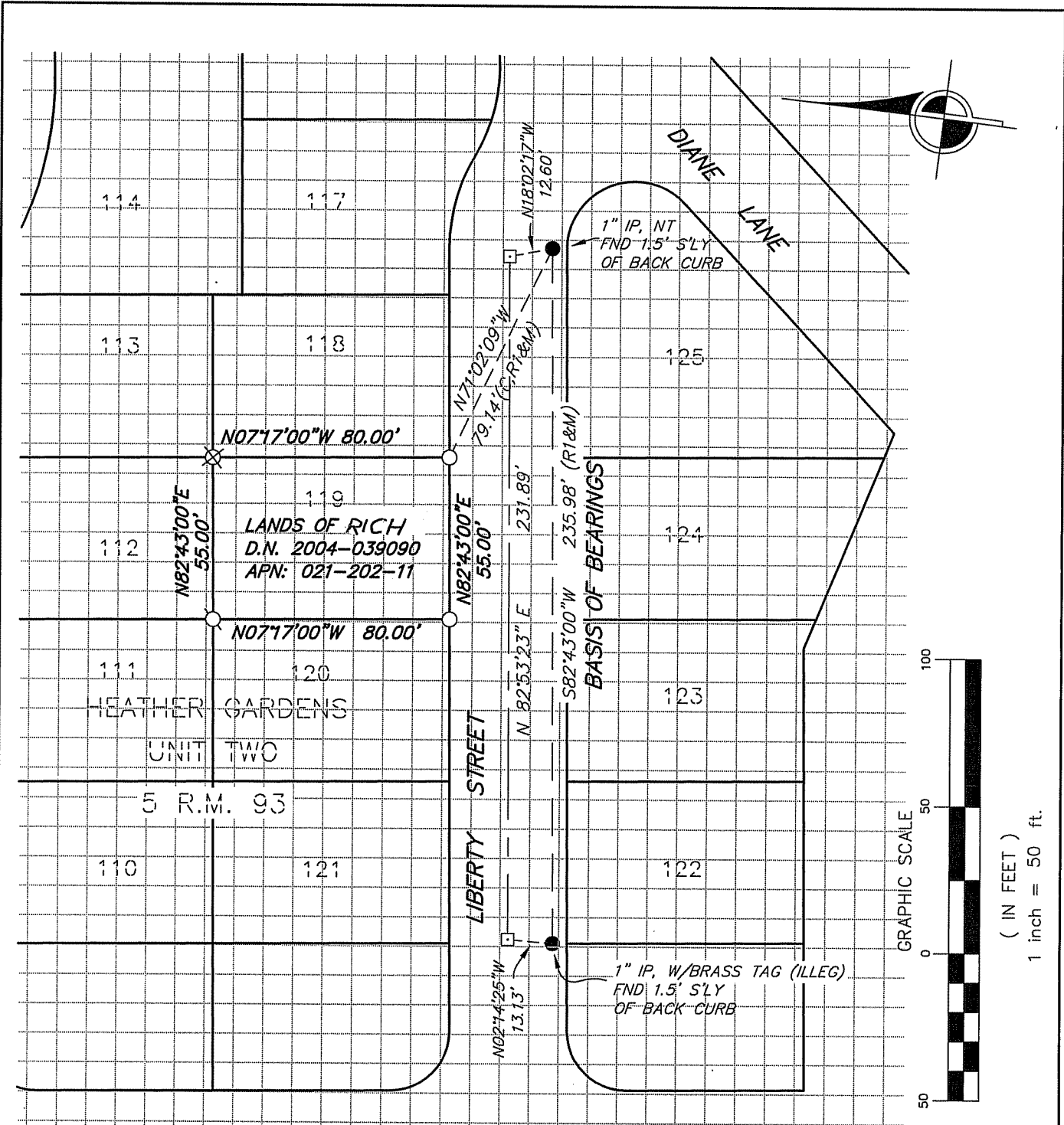
and examined and filed MAY 10, 2006

Signed _____ P.L.S. or R.C.E. No. 7128

Title COUNTY SURVEYOR



County Surveyor's Comments _____



- R1 HEATHER GARDENS UNIT 2, 5 R.M. 93
- C CALCULATED
- FOUND 1" IRON PIPE AS NOTED
- FOUND RAILROAD SPIKE
- SET 1/2" IRON PIPE TAGGED LS 6149
- ⊗ SET NAIL & WASHER TAGGED LS 6149 TOP 4" X 4" POST
- ⊙ SET 100 D SPIKE & WASHER TAGGED LS 6149 AT CONC. FOOTING OF 1.35' X 1.35' BRICK PILLAR

