

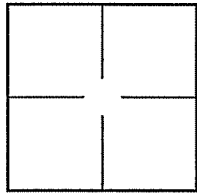
CORNER RECORD

Document Number A.P.# 021-202-07

City of LARKSPUR

County of MARIN, California

Brief Legal Description LOT 115, 5 R.M. 93



CORNER TYPE

COORDINATES (Optional)

Government Corner  Control

Meander  Property

Rancho  Other

Date of Survey 04/26/12

N. \_\_\_\_\_  
 E. \_\_\_\_\_  
 Zone \_\_\_\_\_ NAD27  NAD83   
 NAD83 Epoch \_\_\_\_\_  
 Elev. \_\_\_\_\_  
 Vert. Datum: NGVD29  NAVD88   
 Meas. Units: Metric  Imperial

Corner- Left as found  Found and tagged  Established  Reestablished  Rebuilt

Identification and type of corner found: Evidence used to identify or procedure used to establish or reestablish the corner:

REESTABLISHED WESTERLY LINE OF LOT 115, 5 R.M. 93, PER FOUND MONUMENTS, AS SHOWN ON SHEET 2.

A description of the physical condition of the monument as found and as set or reset: SEE SHEET 2.

SURVEYOR'S STATEMENT

This Corner Record was prepared by me or under my direction in conformance with

the Land Surveyor's Act on APRIL 26 2012

Signed Lawrence P. Doyle P.L.S. or R.C.E. No. P.L.S. 4694



COUNTY SURVEYOR'S STATEMENT

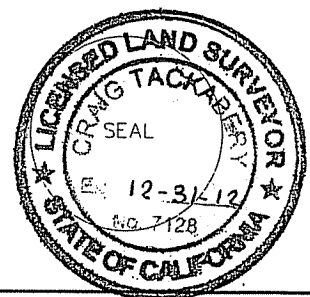
This Corner Record was received JUNE 8, 2012

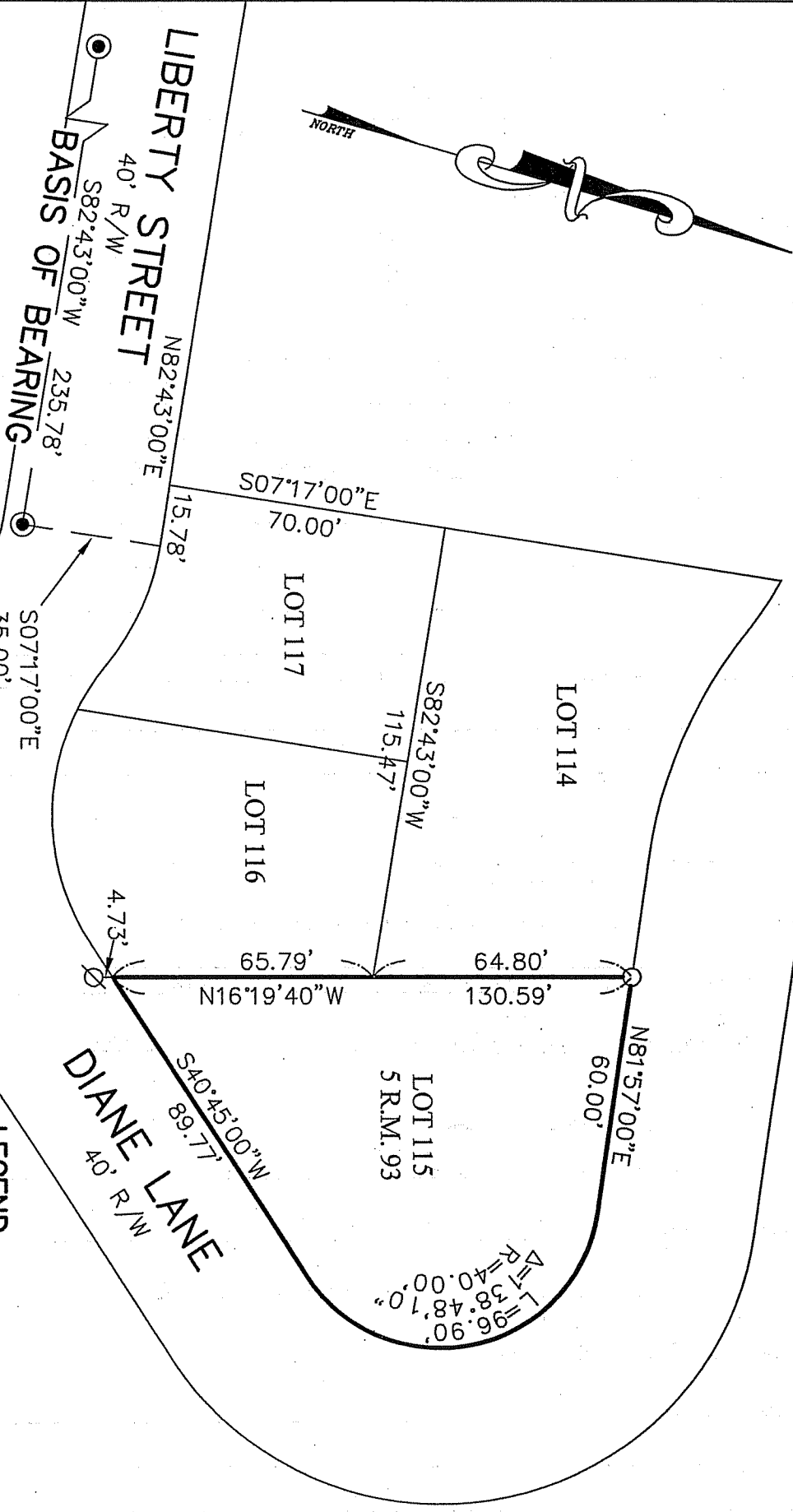
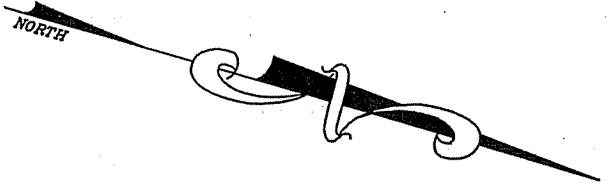
and examined and filed JULY 5, 2012

Signed [Signature] P.L.S. or R.C.E. No. 7128

Title COUNTY SURVEYOR

County Surveyor's Comment \_\_\_\_\_





**BASIS OF BEARING**

THE BASIS OF BEARING FOR THIS SURVEY IS BETWEEN FOUND MONUMENTS ON LIBERTY STREET, PER 5 R.M. 93

**LEGEND**

- FOUND PIPE MONUMENT
- SET NAIL & TAG, L.S. 4694
- SET PIPE & PLUG, L.S. 4694



**CORNER RECORD**  
 LOT 115, 5 R.M. 93  
 LARKSPUR MARIN COUNTY CALIFORNIA

**LAWRENCE P. DOYLE**  
 LAND SURVEYOR/CIVIL ENGINEER  
 100 HELENS LANE MILL VALLEY CA 94941 (415-388-9585)

SCALE: 1" = 40'  
 DATE: 04/2012

DRAWN BY: \_\_\_\_\_  
 SHEET 1 OF 1

DRAWING NO. 2243-12