

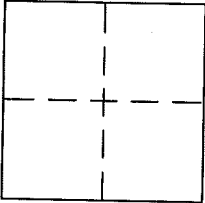
# CORNER RECORD

Document Number 021-201-03

City of LARKSPUR

County of MARIN, California

Brief Legal Description LOT 132, HEATHER GARDENS UNIT 4, 5 MAPS 104



### CORNER TYPE

Government Corner  Control   
 Meander  Property   
 Rancho  Other   
 Date of Survey 4/29/2016

### COORDINATES (Optional)

N. \_\_\_\_\_  
 E. \_\_\_\_\_  
 Zone \_\_\_\_\_ NAD27  NAD83   
 NAD83 Epoch \_\_\_\_\_  
 Elev. \_\_\_\_\_  
 Vert. Datum: NGVD29  NAVD88   
 Meas. Units: Metric  Imperial

Corner - Left as found  Found and tagged  Established  Reestablished  Rebuilt

Identification and type of corner found: Evidence used to identify or procedure used to establish or reestablish the corner:  
SEE PAGE 2

A description of the physical condition of the monument as found and as set or reset:  
SEE PAGE 2

### SURVEYOR'S STATEMENT

This Corner Record was prepared by me or under my direction in conformance with  
 the Land Surveyor's Act on 9/28 2016

Signed [Signature] P.L.S. or R.C.E. No. 6784



### COUNTY SURVEYOR'S STATEMENT

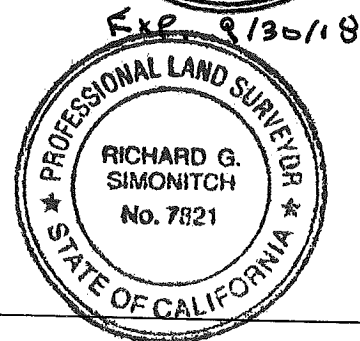
This Corner Record was received JUNE 3, 2016

and examined and filed OCTOBER 17, 2016

Signed [Signature] P.L.S. or R.C.E. No. 7821

Title County Surveyor

County Surveyor's Comment \_\_\_\_\_



# LEGEND

- ⊗ FOUND ORIGINAL 1" IRON PIPE PER 5 MAPS 93
- SET 5/8" REBAR WITH CAP, PLS 6784
- SET PK NAIL & TAG, PLS 6784
- RBC REBAR AND CAP

NOTE:  
RECORD=MEASURED  
UNLESS OTHERWISE NOTED.

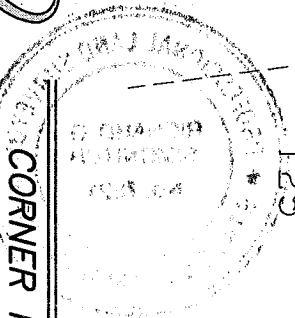
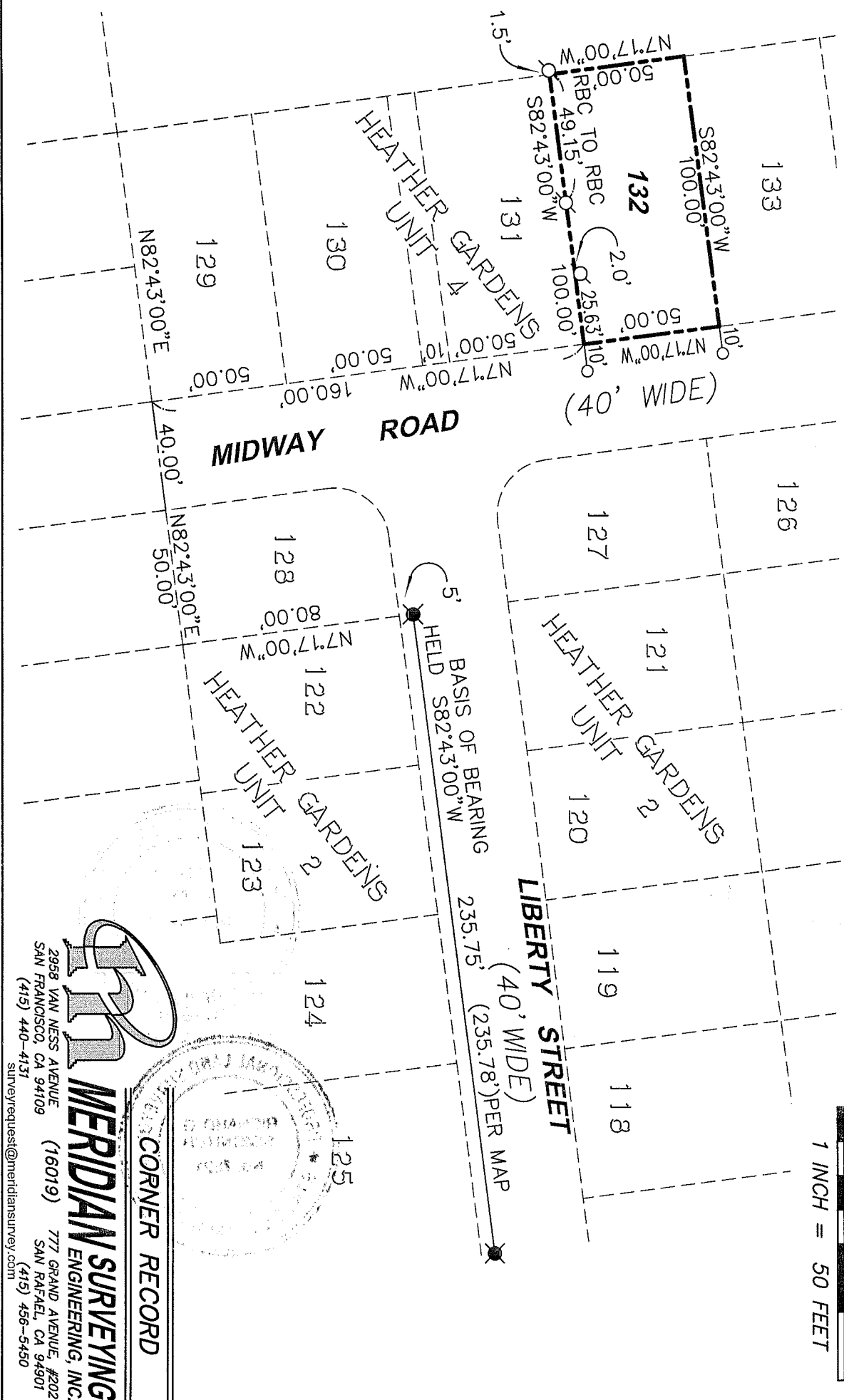
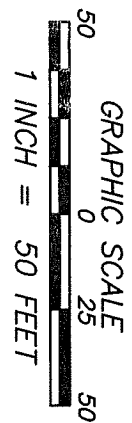
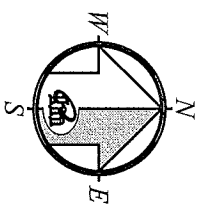
NOTE:  
OFFSETS TO CORNERS SET  
WHERE CORNER IS  
OBSTRUCTED

NOTE:  
EASEMENTS NOT SHOWN

# REFERENCE

"MAP OF HEATHER GARDENS UNIT FOUR LARKSPUR" FILED IN VOLUME 5 OF MAPS, AT PAGE 104, MARIN COUNTY RECORDS.

"MAP OF HEATHER GARDENS UNIT TWO LARKSPUR" FILED IN VOLUME 5 OF MAPS, AT PAGE 93, MARIN COUNTY RECORDS.



**MERIDIAN SURVEYING**  
ENGINEERING, INC.  
CORNER RECORD

2958 VAN NESS AVENUE (16019) 777 GRAND AVENUE, #202  
SAN FRANCISCO, CA 94109 SAN RAFAEL, CA 94901  
(415) 440-4131 (415) 456-5450  
surveyrequest@meridiansurvey.com