

A.P. #21-172-22

RECEIVED

NOV 24 1986

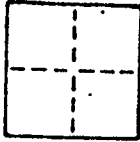
CORNER RECORD

Marin County Public Works

COUNTY OF MARIN

CORNER TYPE: GOVT. CORNER MEANDER RANCHO CONTROL OTHER

CORNER IDENTIFICATION — DATE OF VISIT _____ 19__



CORNER — LEFT AS FOUND FOUND AND TAGGED REESTABLISHED OBLITERATED CORNER REBUILT

PHYSICAL DESCRIPTION OF CORNER FOUND; EVIDENCE AND METHOD USED TO IDENTIFY OR REESTABLISH

Set a 3/4" iron pipe with plastic plug embossed "LS 3775" at the most southerly corner of Parcel A, Book 6 Official Surveys page 17, Marin County Records.

PHYSICAL DESCRIPTION OF MONUMENTS REBUILT OR PERPETUATED

As shown

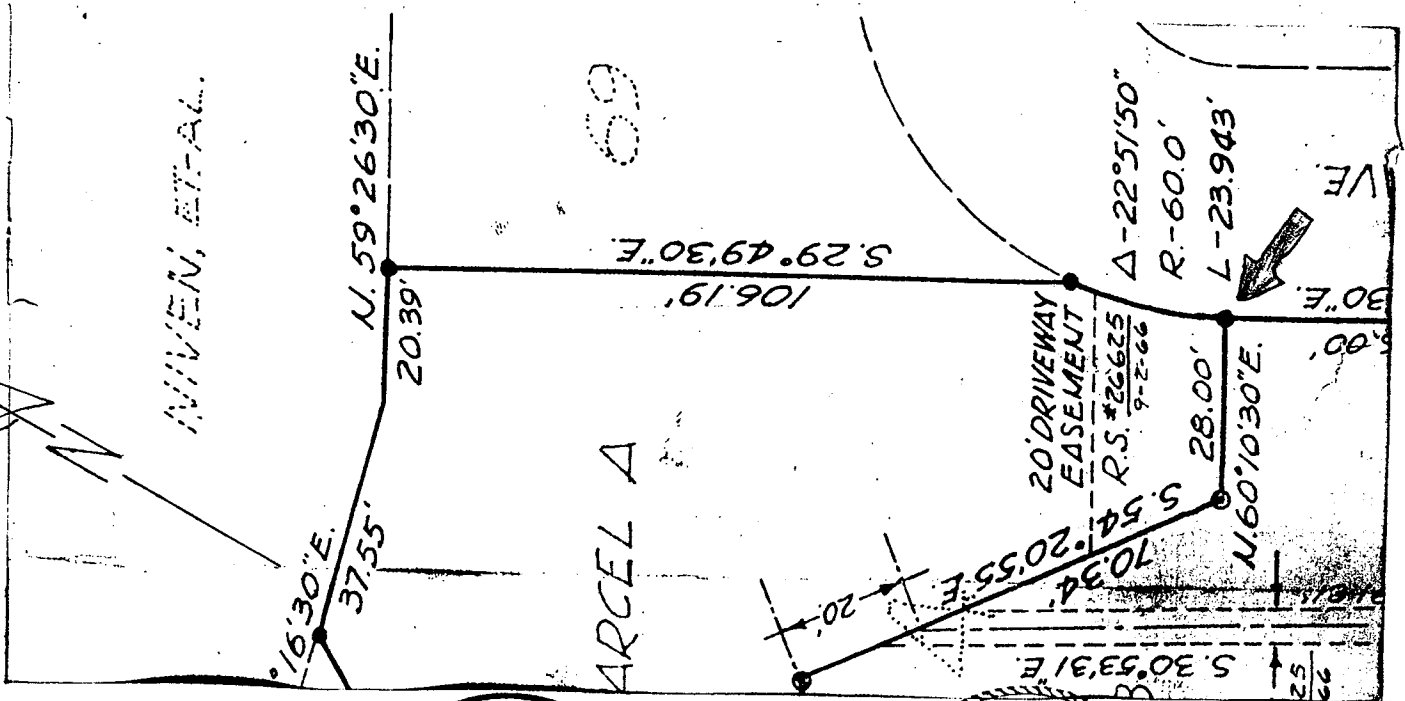
Hendricks

J 1521

AP No. 21-172-22

CALIFORNIA COORDINATE SYSTEM ORDER: FIRST SECOND THIRD
STATIONS USED: NGS (USC & GS) STATE COUNTY OTHER STATION _____ STATION _____
ZONE _____ ELEVATION _____ NORTHINGS (Y) _____ EASTINGS (X) _____

SKETCH: (Include reference tie or witness points, remarks and topo of area)



SURVEYOR'S CERTIFICATE
THIS CORNER RECORD WAS PREPARED BY ME IN ACCORDANCE WITH THE LAND SURVEYORS ACT ON November 17 1986
SIGNED: JOSEPH GRIPP
L.S. or R.C.E. No. 3775

COUNTY SURVEYOR'S CERTIFICATE
THE CORNER RECORD WAS RECEIVED 11-4 1987
AND EXAMINED AND FILED 11-5 1987
EX. 3-31-86
BY: [Signature]
TITLE: DEED TO [Name]
DOCUMENT No. _____