

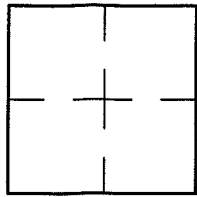
CORNER RECORD

Document Number A.P.# 21-171-13

City of LARKSPUR

County of MARIN, California

Brief Legal Description LOT 7 / BLOCK E / 9 O.S. 30



CORNER TYPE

COORDINATES (Optional)

Government Corner Control

Meander Property

Rancho Other

Date of Survey 8/3/05

N. _____
 E. _____
 Zone NAD27 NAD83
 NAD83 Epoch _____
 Elev. _____
 Vert. Datum: NGVD29 NAVD88
 Meas. Units: Metric Imperial

Corner- Left as found Found and tagged Established Reestablished Rebuilt

Identification and type of corner found: Evidence used to identify or procedure used to establish or reestablish the corner:
ESTABLISHED THE WESTERN BOUNDARY LINE OF LOT 7, USING THE MONUMENTS ON BALTIMORE AVE.
PER 9 O.S. 30.

A description of the physical condition of the monument as found and as set or reset: SEE SHEET 2.

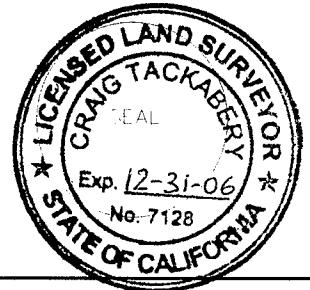
SURVEYOR'S STATEMENT

This Corner Record was prepared by me or under my direction in conformance with
 the Land Surveyor's Act on AUGUST 4 2005
 Signed Lawrence P Doyle P.L.S. or R.C.E. No. P.L.S. 4694



COUNTY SURVEYOR'S STATEMENT

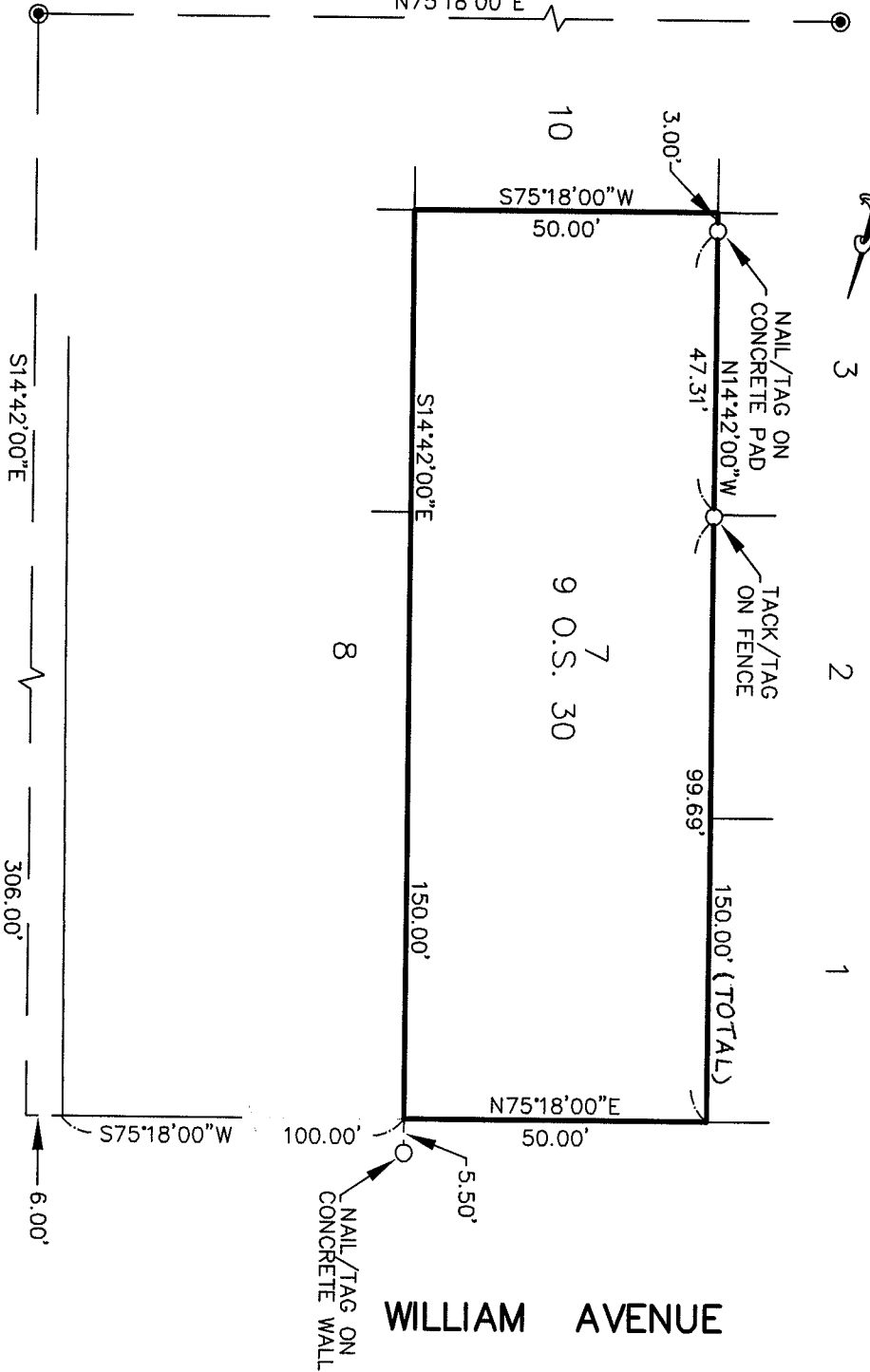
This Corner Record was received SEPTEMBER 6, 2005
 and examined and filed OCTOBER 4, 2005
 Signed [Signature] P.L.S. or R.C.E. No. 7128
 Title CO. SURVEYOR



County Surveyor's Comment _____

BALTIMORE AVENUE

BASIS OF BEARING
N75°18'00"E



LEGEND

- SET POINT L.S. 4694 (AS SHOWN)
- STANDARD MONUMENT PER 9 O.S. 30

BASIS OF BEARING

THE BASIS OF BEARING FOR THIS SURVEY IS N 75°18'00" E BETWEEN TWO FOUND MONUMENTS PER 9 O.S. 30

HOLCOMB AVENUE

WILLIAM AVENUE



CORNER RECORD
LOT 7 / BLOCK E / 9 O.S. 30
 LARKSPUR MARIN COUNTY CALIFORNIA

LAWRENCE P. DOYLE
 LAND SURVEYOR/CIVIL ENGINEER

P.O. BOX 1609 MILL VALLEY CA 94942 (415-388-9585)

SCALE: 1" = 30'
 DATE: 8/04/05
 DRAWN BY: SHEET 2 OF 2
 DRAWING NO. 1173-05