

# CORNER RECORD

Agency Index CR23-055

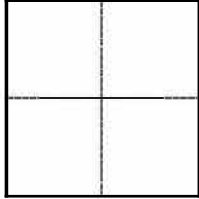
Document Number 021-171-09

City of \_\_\_\_\_ County of MARIN, California

Brief Legal Description LOT 3, BLOCK "E", AS SHOWN ON THE SUBDIVISION MAP RECORDED IN VOLUME 2, OF MAPS. AT PAGE 90. MARIN COUNTY RECORDS

### CORNER TYPE

### COORDINATES (Optional)



- Government Corner
- Meander
- Rancho
- Control
- Property
- Other

Date of Survey 06/14/2023

N. \_\_\_\_\_ E. \_\_\_\_\_

Elevation \_\_\_\_\_

Units  Metric  U.S. Survey Foot

Horizontal Datum \_\_\_\_\_

Zone \_\_\_\_\_ Epoch Date \_\_\_\_\_

Vertical Datum \_\_\_\_\_

Complies with Public Resources Code §§8801-8819

Complies with Public Resources Code §§8890-8902

PLS Act Ref.:  8765(d)  8771  8773  Other: \_\_\_\_\_

Corner/Monument:  Left as found  Established  Rebuilt  Pre-Construction

Found and tagged  Reestablished  Referenced  Post-Construction

Narrative of corner identified and monument as found, set, reset, replaced, or removed:

See sheet #2 for description(s):

**FOUND MONUMENTS FROM THE RECORD OF SURVEY RECORDED IN BOOK 9 OF SURVEYS, AT PAGE 30, MCR, THE RECORD OF SURVEY RECORD IN BOOK 2021 OF MAPS, AT PAGE 140, MCR AND THE CORNER RECORD 021-171-06. SET NAIL & 1/2" BRASS DISK MONUMENTS, TAGGED PLS 8155, AT THE WESTERLY CORNERS OF THE SUBJECT PARCEL. SEE SHEET 2 FOR MORE INFORMATION**

### SURVEYOR'S STATEMENT

This Corner Record was prepared by me or under my direction in conformance with the Professional Land Surveyors' Act on 07/06/2023

Signed *Stenker* P.L.S. or  No. 8155



### COUNTY SURVEYOR'S STATEMENT

This Corner Record was received July 06, 2023

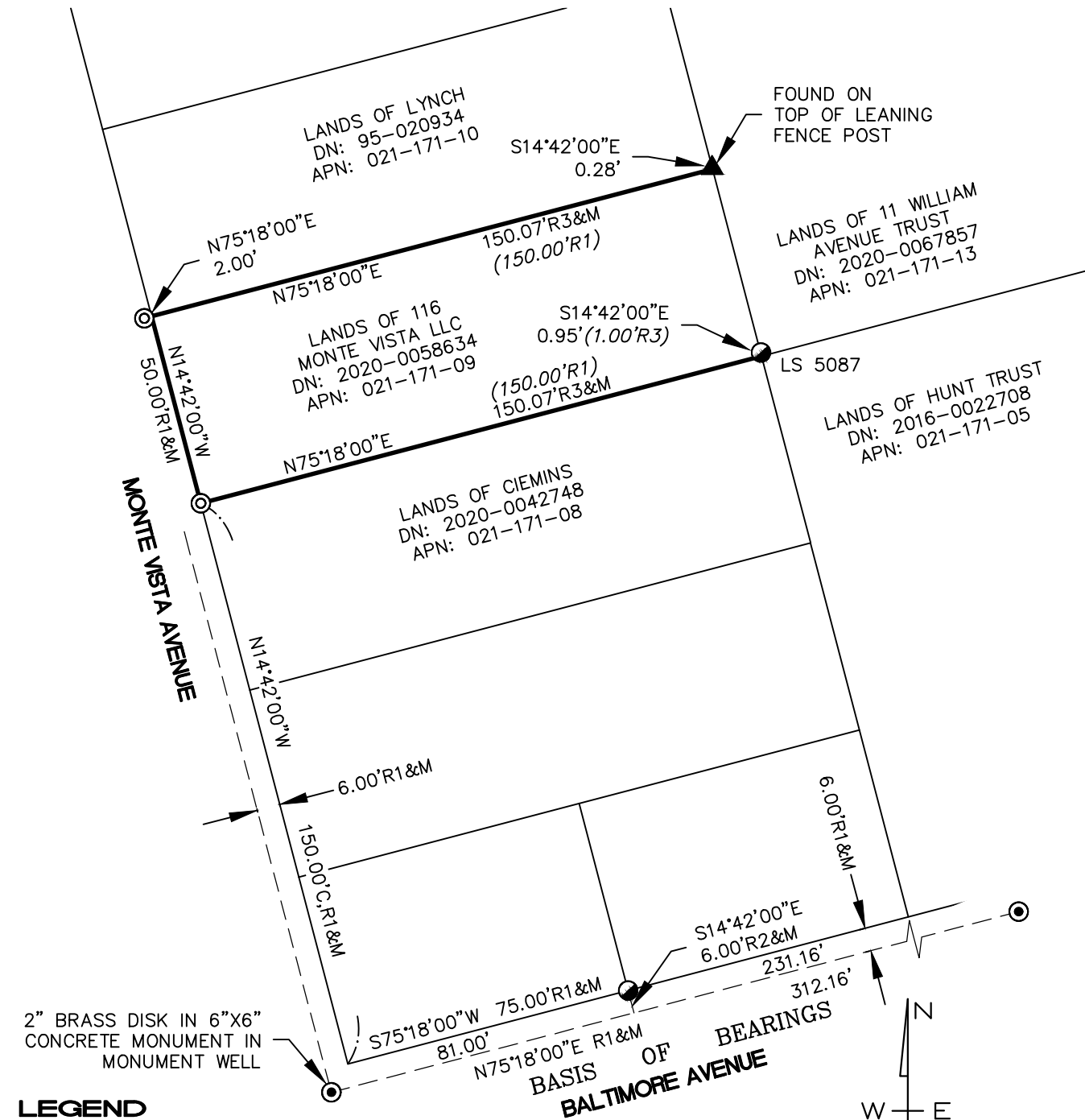
and examined and filed July 06, 2023

Signed *T.W. Park* P.L.S.  No. 8176

Title County Surveyor

County Surveyor's Comment



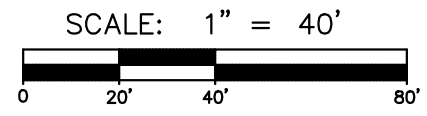
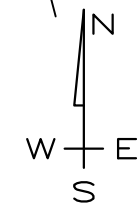


2" BRASS DISK IN 6"x6"  
CONCRETE MONUMENT IN  
MONUMENT WELL

**LEGEND**

- BOUNDARY LINE
- ADJOINING BOUNDARY LINE
- ⊙ SET NAIL & 1/2" BRASS DISK, TAGGED PLS 8155
- FOUND 3/4" IRON PIPE, WITH PLUG TAGGED LS 4694 (R2), OR AS NOTED (R3)
- ▲ FOUND TACK AND BRASS TAG, LS 4694 (R4)
- ⊙ FOUND 1" IRON PIN WITH PUNCH IN MONUMENT WELL, OR AS NOTED (R1)
- DN DOCUMENT NUMBER
- R1 RECORD OF SURVEY (9 SURVEYS 30)
- R2 CORNER RECORD (APN 021-171-06)
- R3 RECORD OF SURVEY (2021 MAPS 140)
- R4 CORNER RECORD (APN 021-171-13)

BASIS OF BEARINGS  
BALTIMORE AVENUE



**MUNSELLE CIVIL ENGINEERING**  
 CIVIL ENGINEERING ♦ LAND PLANNING  
 513 CENTER STREET  
 HEALDSBURG, CA 95448  
 (707) 395-0968

**MCE**  
 CIVIL ENGINEERING  
 LAND SURVEYING