

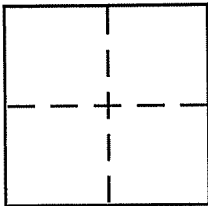
CORNER RECORD

Document Number APN 21-161-26

City of CORTE MADERA

County of MARIN, California

Brief Legal Description A.P.N. 021-161-26



CORNER TYPE

Government Corner Control
Meander Property
Rancho Other
Date of Survey 6-23-09

COORDINATES (Optional)

N. _____
E. _____
Zone _____ NAD27 NAD83
NAD83 Epoch _____
Elev. _____
Vert. Datum: NGVD29 NAVD88
Meas. Units: Metric Imperial

Corner - Left as found Found and tagged Established Reestablished Rebuilt

Identification and type of corner found: Evidence used to identify or procedure used to establish or reestablish the corner:

FOUND IRON PIPES, IN CONJUNCTION WITH RECORD
ANGLES AND DISTANCES, FROM PARCEL MAP RECORDED
IN BOOK 12 OF PARCEL MAPS AT PAGE 16,
MARIN COUNTY RECORDS WERE USED.

A description of the physical condition of the monument as found and as set or reset:

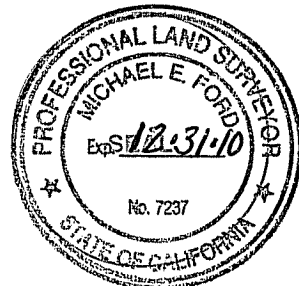
SET 1/2" IRON PIPES TAGGED LS 7237

SURVEYOR'S STATEMENT

This Corner Record was prepared by me or under my direction in conformance with

the Land Surveyor's Act on JUNE 24 2009

Signed Michael E. Ford P.L.S or R.C.E. No. 7237



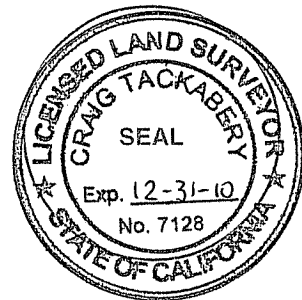
COUNTY SURVEYOR'S STATEMENT

This Corner Record was received JULY 1, 2009

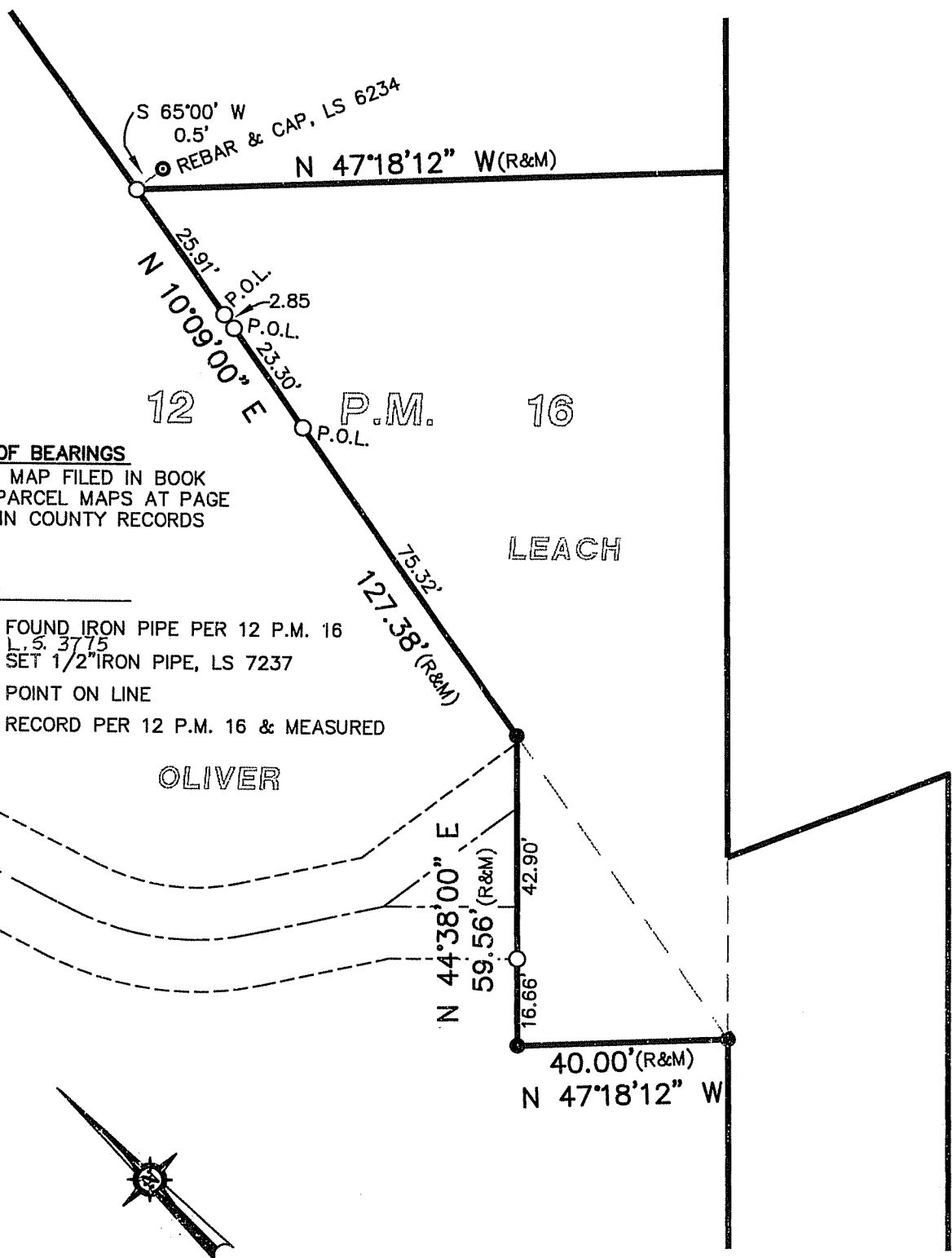
and examined and filed AUGUST 3, 2009

Signed [Signature] P.L.S or R.C.E. No. 7128

Title COUNTY SURVEYOR



County Surveyor's Comment _____



BASIS OF BEARINGS

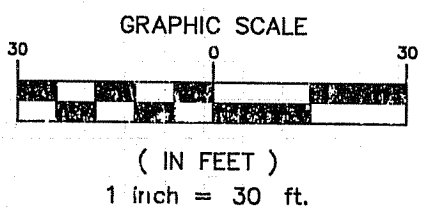
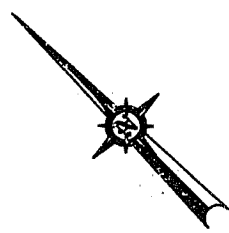
PARCEL MAP FILED IN BOOK
12 OF PARCEL MAPS AT PAGE
16 MARIN COUNTY RECORDS

LEGEND

- FOUND IRON PIPE PER 12 P.M. 16
L.S. 3715
- SET 1/2" IRON PIPE, LS 7237
- P.O.L. POINT ON LINE
- (R&M) RECORD PER 12 P.M. 16 & MEASURED

OLIVER

LEACH



michael ford inc.
land surveying

8910 sonoma hwy suite 12b
po box 1243, kenwood, ca 95452
p 707.833.6468 - f 707.833.5744
www.michaelfordinc.com