

CORNER RECORD

Agency Index

DPW#19-054

Document Number

021-161-02

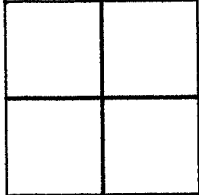
Town of Corte Madera

County of MARIN, California

Brief Legal Description Northeasterly Line of Lands of Grammens, 2007 ROS 5

CORNER TYPE

COORDINATES (Optional)



Government Corner Control
Meander Property
Rancho Other

N. _____ E. _____
 Elevation _____
 Units Metric U.S. Survey Foot
 Horizontal Datum _____
Zone _____ Epoch Date _____
Vertical Datum _____

Date of Survey February 28, 2019

Complies with Public Resources Code §§8801-8819
 Complies with Public Resources Code §§8890-8902

PLS Act Ref: 8765(d) 8771 8773 Other:

Corner/Monument: Left as found Established Rebuilt Pre-Construction
 Found and tagged Reestablished Referenced Post-Construction

Narrative of corner identified and monument as found, set, reset, replaced, or removed:

See sheet #2 for description (s):

SURVEYOR'S STATEMENT

This Corner Record was prepared by me or under my direction in conformance with the Professional Land Surveyors' Act on May 14, 2019

Signed [Signature] P.L.S. or R.C.E. No. 6649



COUNTY SURVEYOR'S STATEMENT

This Corner Record was received MAY 31, 2019
and examined and filed AUG. 20, 2019

Signed [Signature] P.L.S. or R.C.E. No. 9292

Title DEPUTY C.S.



County Surveyor's Comment _____

All distances shown are in feet and decimals thereof

LEGEND

- Found 3/4" Iron Pipe & 1 1/2" Aluminum Cap with Tack Stamped, "LA Stevens PLS 6649" (U.N.O.)
- ⊕ 6' Steel T-Post Set, Wired Yellow Cap at top marked "LS 6649", 4' above ground
- ⊙ Set Nail & Yellow Plastic Tag Stamped, "LA Stevens PLS 6649", in 16" Redwood Tree, Approximately 4.5' Above Ground
- 16" Redwood Tree



LANDS OF GRAMMENS
(D.N. 10-050405)
(885 OR 612)

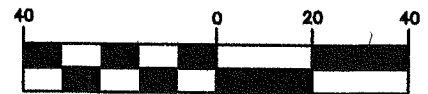
LANDS OF MICHAEL L. SHAFER
(D.N. 13-0020669)

LANDS OF LUCY S. MCALLISTER
(D.N. 15-0020863)

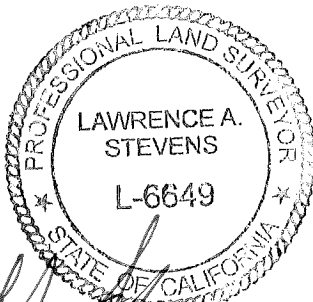
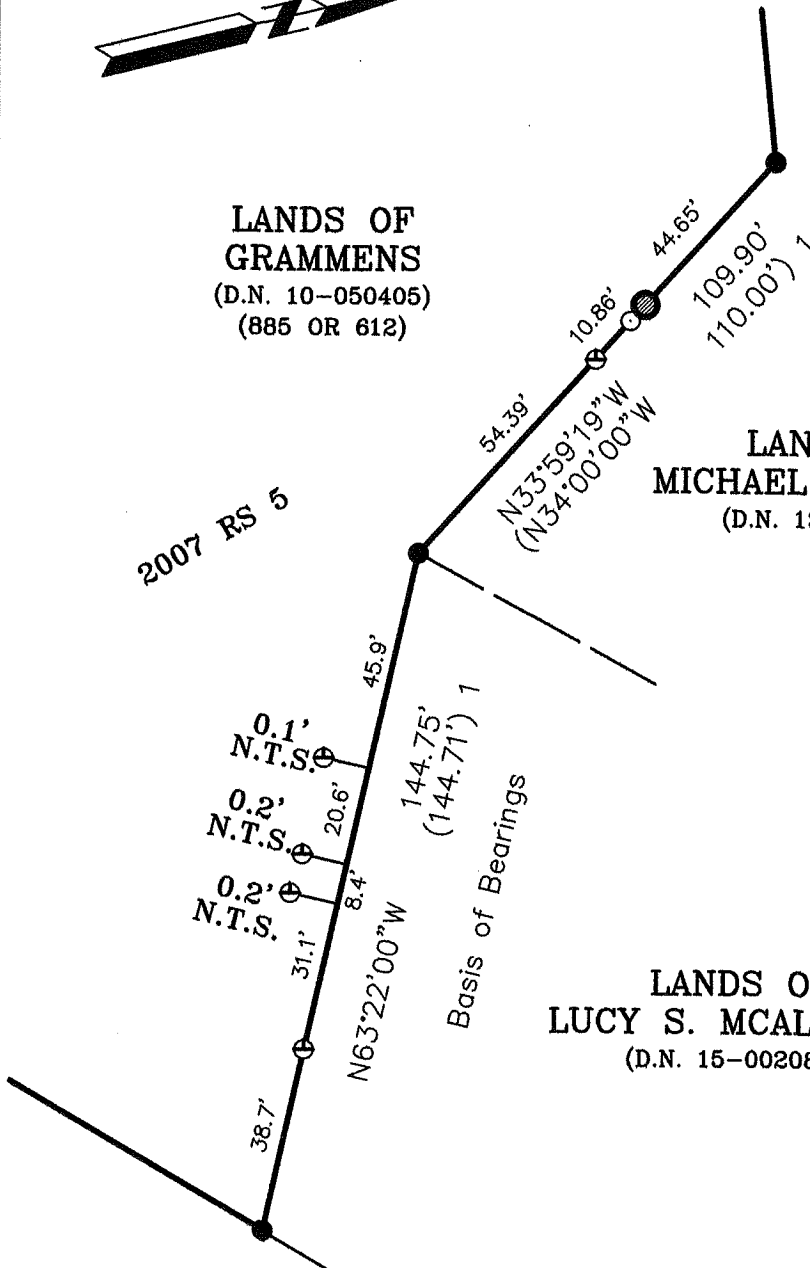
REFERENCES

() 2007 ROS 5

GRAPHIC SCALE



(IN FEET)



5-14-2019

**Corner Record
Lands of Grammens**

(DN 2010-0050405)

Corte Madera Marin County California
Scale: 1" = 40' May 2019

L.A. Stevens & Associates, Inc.

Professional Land Surveyors * (415) 382-7713
7 Commercial Blvd., Suite 1 * Novato, CA 94949

Job # 171799

Lawrence A. Stevens, PLS 6649

Copyright © Lawrence A. Stevens 2019

All distances shown are in feet and decimals thereof

LEGEND

- Found 3/4" Iron Pipe & 1 1/2" Aluminum Cap with Tack Stamped, "LA Stevens PLS 6649" (U.N.O.)
- ⊕ 6' Steel T-Post Set, Wired Yellow Cap at top marked "LS 6649", 4' above ground
- ⊙ Set Nail & Yellow Plastic Tag Stamped, "LA Stevens PLS 6649", in 16" Redwood Tree, Approximately 4.5' Above Ground
- 16" Redwood Tree



LANDS OF GRAMMENS
(D.N. 10-050405)
(885 OR 612)

LANDS OF MICHAEL L. SHAFER
(D.N. 13-0020669)

LANDS OF LUCY S. MCALLISTER
(D.N. 15-0020863)

2007 RS 5

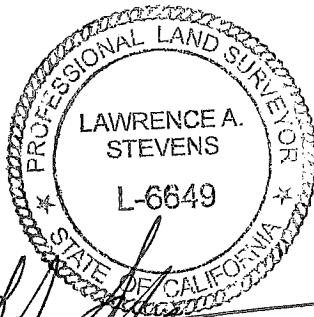
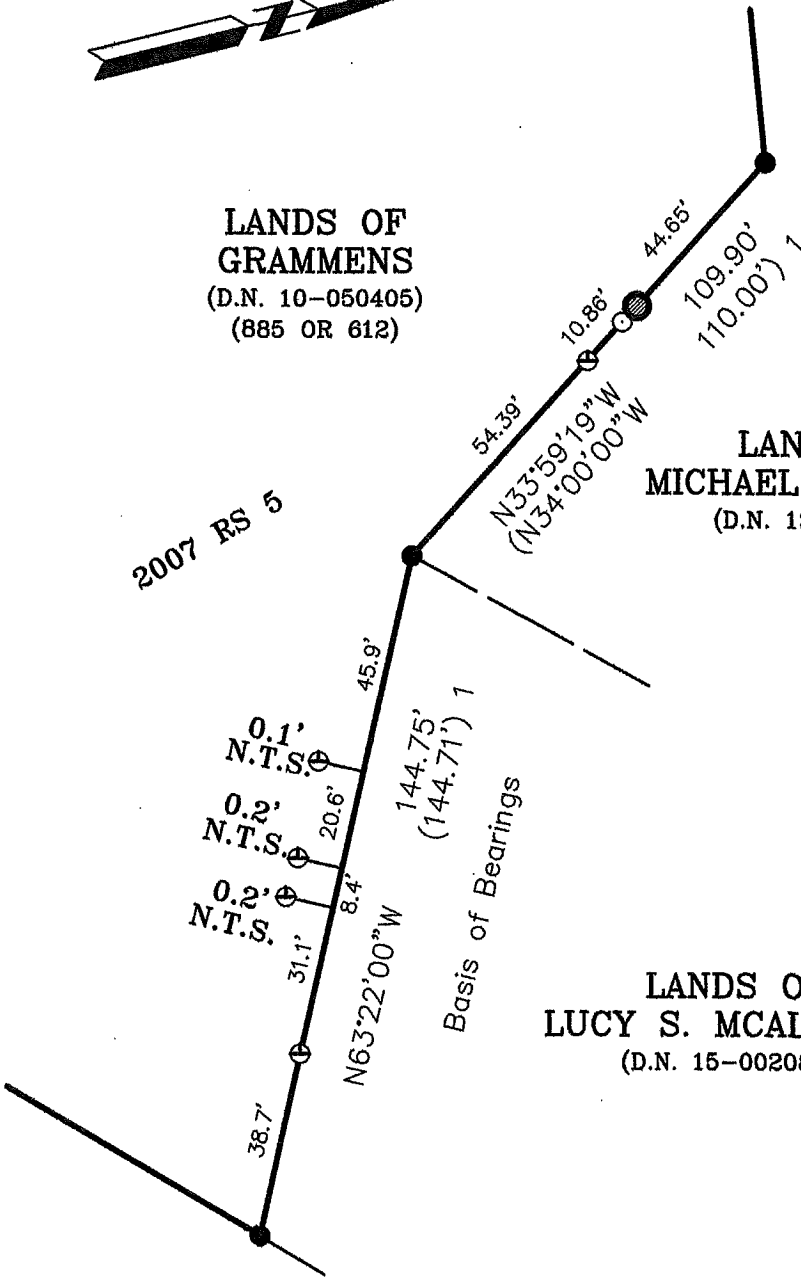
REFERENCES

() 1 2007 ROS 5

GRAPHIC SCALE



(IN FEET)



5-14-2019

Lawrence A. Stevens, PLS 6649

Copyright © Lawrence A. Stevens 2019

**Corner Record
Lands of Grammens**

(DN 2010-0050405)

Corte Madera Marin County California
Scale: 1" = 40' May 2019

L.A. Stevens & Associates, Inc.

Professional Land Surveyors * (415) 382-7713
7 Commercial Blvd., Suite 1 * Novato, CA 94949

Job # 171799