

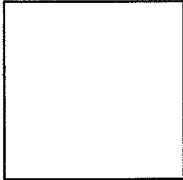
CORNER RECORD

APN 021-153-01

Document No. 29 OS 70

City of Larkspur County of Marin, California

Brief Legal Description Lands of Ginn, DN. 2005-021990, Marin County Records



CORNER TYPE

COORDINATES (Optional)

Government Corner  Control   
Meander  Property   
Rancho  Other   
Date of Survey April 13, 2005

N. \_\_\_\_\_  
E. \_\_\_\_\_  
Zone \_\_\_\_\_ Datum \_\_\_\_\_  
Elev. \_\_\_\_\_

Corner- Left as found  Found and tagged  Established  Reestablished  Rebuilt

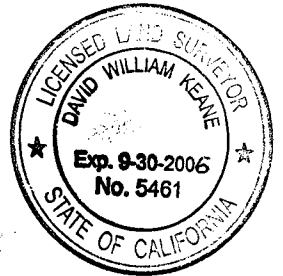
Identification and type of corner found: Evidence used to identify or procedure to establish or reestablish the corner: Reestablished property corners per found monuments as shown on herein sht., 2 and per "Record of Survey Lands of Thurman", recorded in book 29 of Surveys Page 70, County of Marin.

A description of the physical condition of the monument as found and as set or reset: Set 1/2" iron pipe w/ plastic cap, LS 5461 and nail & tag LS 5461 at locations shown on herein sht. 2. Found 3/4" iron pipe w/ plastic cap, LS 2738, and conc. nail at locations shown on herein sht. 2.

SURVEYOR'S STATEMENT

This Corner Record was prepared by me or under my direction in conformance with the Land Surveyors Act on April 25, 2005.

Signed [Signature] PLS Number 5461



COUNTY SURVEYOR'S STATEMENT

This Corner Record was received 4-26 2005 and examined and filed 6-29- 2005.

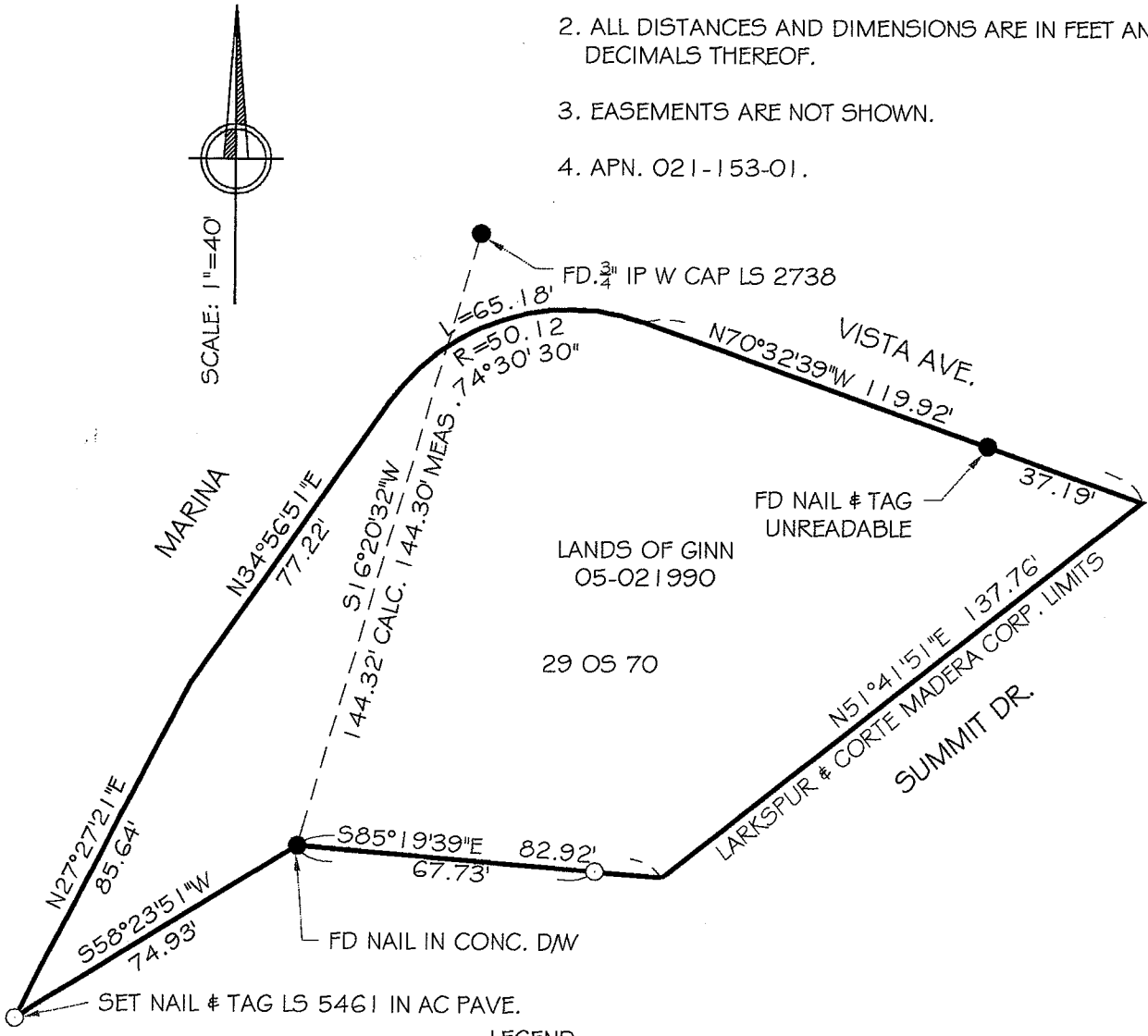
Signed [Signature] Title COUNTY SURV.

County Surveyor's Comments \_\_\_\_\_



NOTE:

1. ALL DIMENSIONS SHOWN HEREIN ARE PER 29 OS 70 UNLESS OTHERWISE NOTED.
2. ALL DISTANCES AND DIMENSIONS ARE IN FEET AND DECIMALS THEREOF.
3. EASEMENTS ARE NOT SHOWN.
4. APN. 021-153-01.



LEGEND:

- SET 1/2" IRON PIPE W/ PL. CAP LS 5461, OR AS SHOWN
- FOUND MONUMENTS AS SHOWN

EXHIBIT "A"

**BRACKEN & KEANE**

Civil Engineers & Land Surveyors

5710 Paradise Drive, Ste. 8

Corte Madera, CA 94925

tel: (415) 927-8801 fax: (415) 927-8803