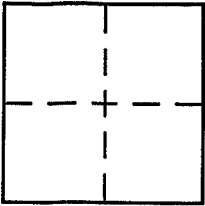


CORNER RECORD

Document Number 05-42834  
County of Marin, California

City of Larkspur  
Brief Legal Description Lot 6 13 RM 80



CORNER TYPE

Government Corner  Control   
Meander  Property   
Rancho  Other   
Date of Survey 7/27/05

COORDINATES (Optional)

N. \_\_\_\_\_  
E. \_\_\_\_\_  
Zone \_\_\_\_\_ NAD27  NAD83   
NAD83 Epoch \_\_\_\_\_  
Elev. \_\_\_\_\_  
Vert. Datum: NGVD29  NAVD88   
Meas. Units: Metric  Imperial

Corner - Left as found  Found and tagged  Established  Reestablished  Rebuilt

Identification and type of corner found: Evidence used to identify or procedure used to establish or reestablish the corner:

Set and found points as shown on reverse in conformance with standard street monuments in Lark Court

A description of the physical condition of the monument as found and as set or reset:

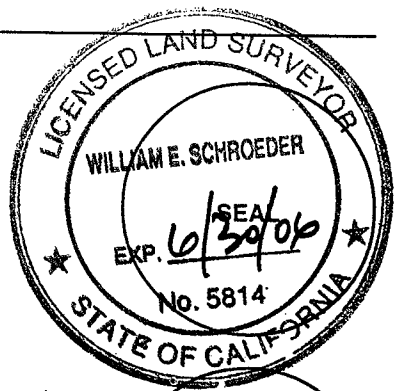
See Reverse Side

SURVEYOR'S STATEMENT

This Corner Record was prepared by me or under my direction in conformance with

the Land Surveyor's Act on August 13, 2005

Signed William Schroeder P.L.S. or R.C.E. No. 5814



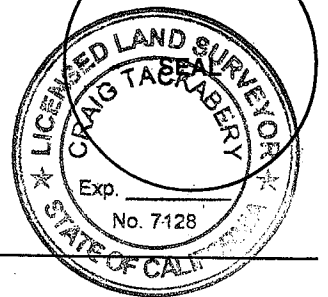
COUNTY SURVEYOR'S STATEMENT

This Corner Record was received NOVEMBER 8, 2005

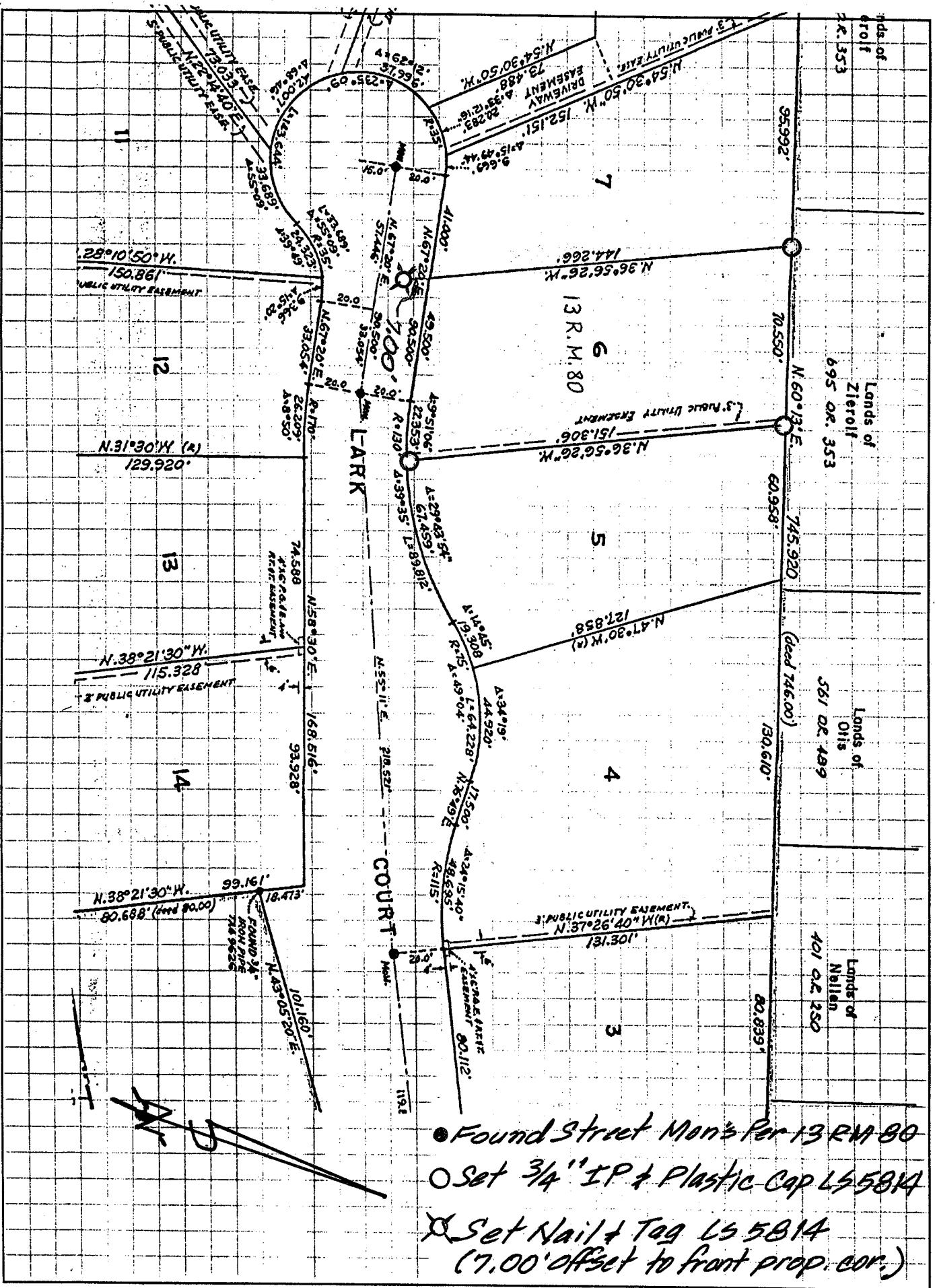
and examined and filed DECEMBER 8, 2005

Signed Craig Tackabery P.L.S. or R.C.E. No. 7128

Title COUNTY SURVEYOR



County Surveyor's Comment \_\_\_\_\_



● Found Street Mon's Per 13 RM 80  
 ○ Set 3/4" IP + Plastic Cap Ls 5814  
 ⊗ Set Nail + Tag Ls 5814  
 (7.00' offset to front prop. cor.)