

CORNER RECORD

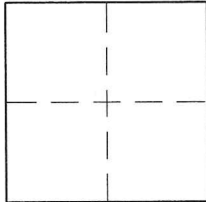
Agency Index DPW # 18-019

Document Number 021-121-39

City of LARKSPUR

County of MARIN, California

Brief Legal Description RECORD OF SURVEY, LANDS OF DUBUC, 35 O.S. 33, BEING A PORTION OF LOT 2, BLOCK 1, 2 MAPS 90, MARIN COUNTY RECORDS



CORNER TYPE

Government Corner Control
Meander Property
Rancho Other

Date of Survey 2/10/2018

COORDINATES (Optional)

N. _____ E. _____
Elevation _____
Units Metric U.S. Survey Foot
Horizontal Datum _____
Zone _____ Epoch Date _____
Vertical Datum _____

Complies with Public Resources Code §§8801-8819

Complies with Public Resources Code §§8890-8902

PLS Act Ref: 8765(d) 8771 8773 Other:

Corner / Monument: Left as found Established Rebuilt Pre-Construction
 Found and tagged Reestablished Referenced Post-Construction

Narrative of corner identified and monument as found, set, reset, replaced, or removed:

See sheet #2 for description (s): (SEE SHEET 2 FOR DIAGRAM AND ADDITIONAL INFORMATION)
RETRACED PARCEL PER RECORD OF SURVEY, LANDS OF DUBUC, 35 O.S. 33., HOLDING A FOUND 3/4" IRON PIPE WITH PLASTIC PLUG "LS 5814" SET BY SCHROEDER AT THE SOUTHERLY CORNER ALONG THE R/W CURVE OF ARDMORE ROAD, AND A 3/4" IRON ROD IN MAGNOLIA AVENUE WHICH SCHROEDER SHOWS AS FOUND AND OFF BY 0.63' FROM THE MOST NORTHEASTERLY CORNER. A SECOND SCHROEDER 3/4" IRON PIPE & PLUG WAS FOUND AT THE MOST WESTERLY CORNER. WE ALSO SURVEYED THE CURB LINE OF MAGNOLIA AVENUE AND IT CONFORMS WITH 35 O.S. 33. THE OTHER CORNERS WERE SEARCHED FOR, NOT FOUND, AND REPLACED AT THE LOCATIONS SHOWN ON 35 O.S. 33. POINTS ON LINE WERE SET AS SHOWN ON SHEET 2. THE FOUND MONUMENTS AND CURB MEASUREMENTS ARE SUFFICIENT TO RETRACE 35 O.S. 33.

SURVEYOR'S STATEMENT

This Corner Record was prepared by me or under my direction in conformance with the Professional Land Surveyors' Act on 9/14/18

Signed [Signature] P.L.S. or R.C.E. No. 8475



COUNTY SURVEYOR'S STATEMENT

This Corner Record was received MARCH 29, 2018

and examined and filed OCT. 16, 2018

Signed [Signature] P.L.S. or R.C.E. No. 9292

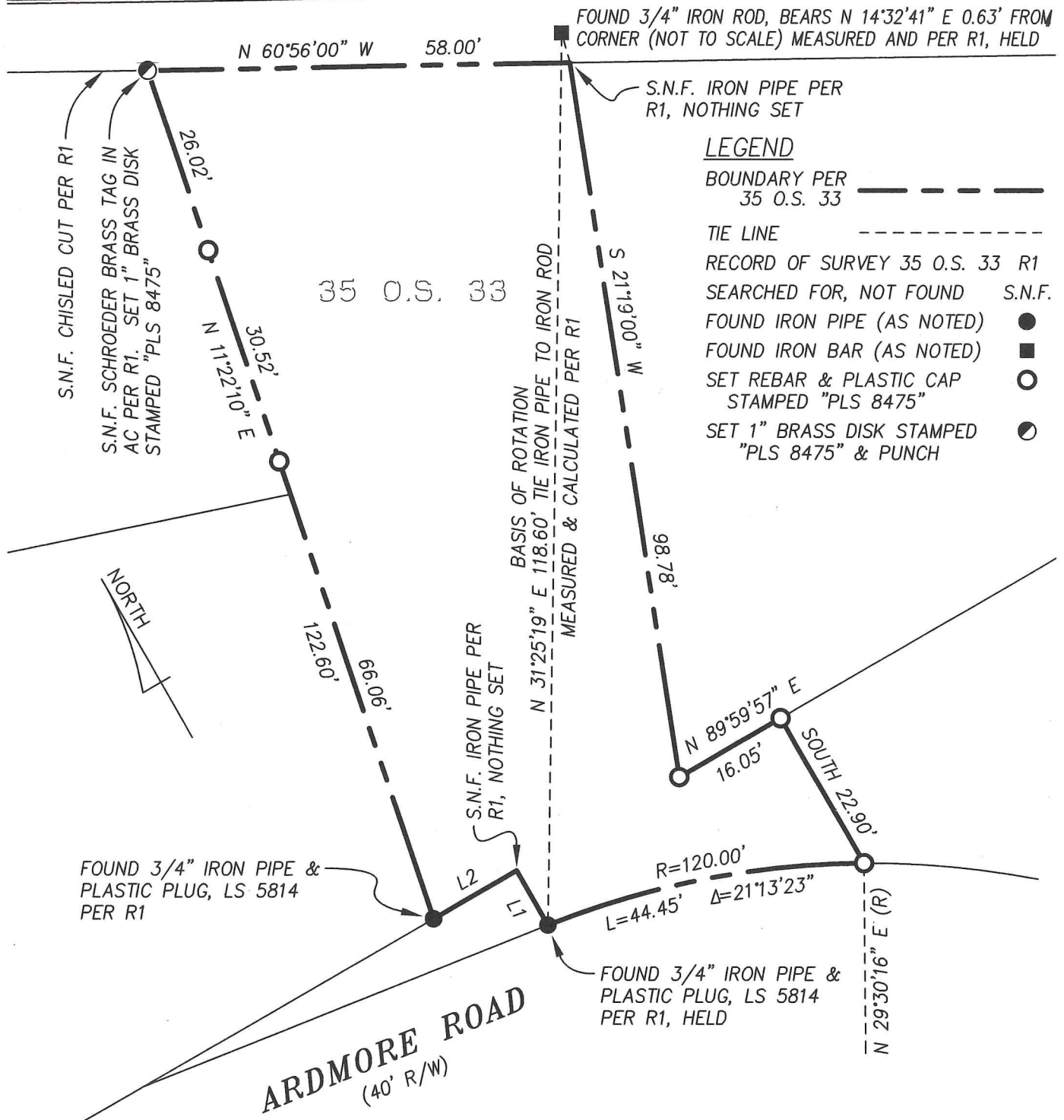
Title DEPUTY C.S.



County Surveyor's Comment _____

MAGNOLIA AVENUE (60' R/W)

CONCRETE CURB - BEARING N 60°56'00" W



LEGEND

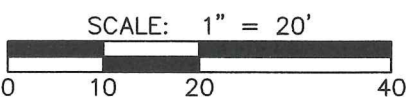
- BOUNDARY PER 35 O.S. 33
- TIE LINE
- RECORD OF SURVEY 35 O.S. 33 R1 SEARCHED FOR, NOT FOUND S.N.F.
- FOUND IRON PIPE (AS NOTED) ●
- FOUND IRON BAR (AS NOTED) ■
- SET REBAR & PLASTIC CAP STAMPED "PLS 8475" ○
- SET 1" BRASS DISK STAMPED "PLS 8475" & PUNCH ◐

GENERAL NOTES

1. DISTANCES ARE IN FEET AND DECIMALS THEREOF.
2. ALL DISTANCES ARE RECORD PER 35 O.S. 33
3. MONUMENT LOCATIONS MAY BE EXAGGERATED FOR CLARITY.

LINE TABLE

LINE	BEARING	LENGTH
L1	NORTH	8.584'
L2	S 89°59'57" W	13.19'



DMG ENGINEERING, INC.
 30 OAKVUE COURT, PLEASANT HILL, CALIF. 94523
 PHONE (925) 787-0463 • FAX (925) 287-8503

JOB: 18-21 DATE: 7/31/18