

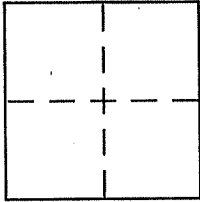
CORNER RECORD

Document Number APN 021-115-11

City of Larkspur

County of Marin, California

Brief Legal Description Parcel A per 9 PM 27



CORNER TYPE

Government Corner Control
Meander Property
Rancho Other
Date of Survey 01-13-11

COORDINATES (Optional)

N. _____
E. _____
Zone _____ NAD27 NAD83
NAD83 Epoch _____
Elev. _____
Vert. Datum: NGVD29 NAVD88
Meas. Units: Metric Imperial

Corner - Left as found Found and tagged Established Reestablished Rebuilt

Identification and type of corner found: Evidence used to identify or procedure used to establish or reestablish the corner:

See page 2 of 2

A description of the physical condition of the monument as found and as set or reset:

See page 2 of 2

SURVEYOR'S STATEMENT

This Corner Record was prepared by me or under my direction in conformance with the Land Surveyor's Act on 2/1/2011

Signed [Signature] P.L.S. or R.C.E. No. 6784



COUNTY SURVEYOR'S STATEMENT

This Corner Record was received FEBRUARY 16, 2011

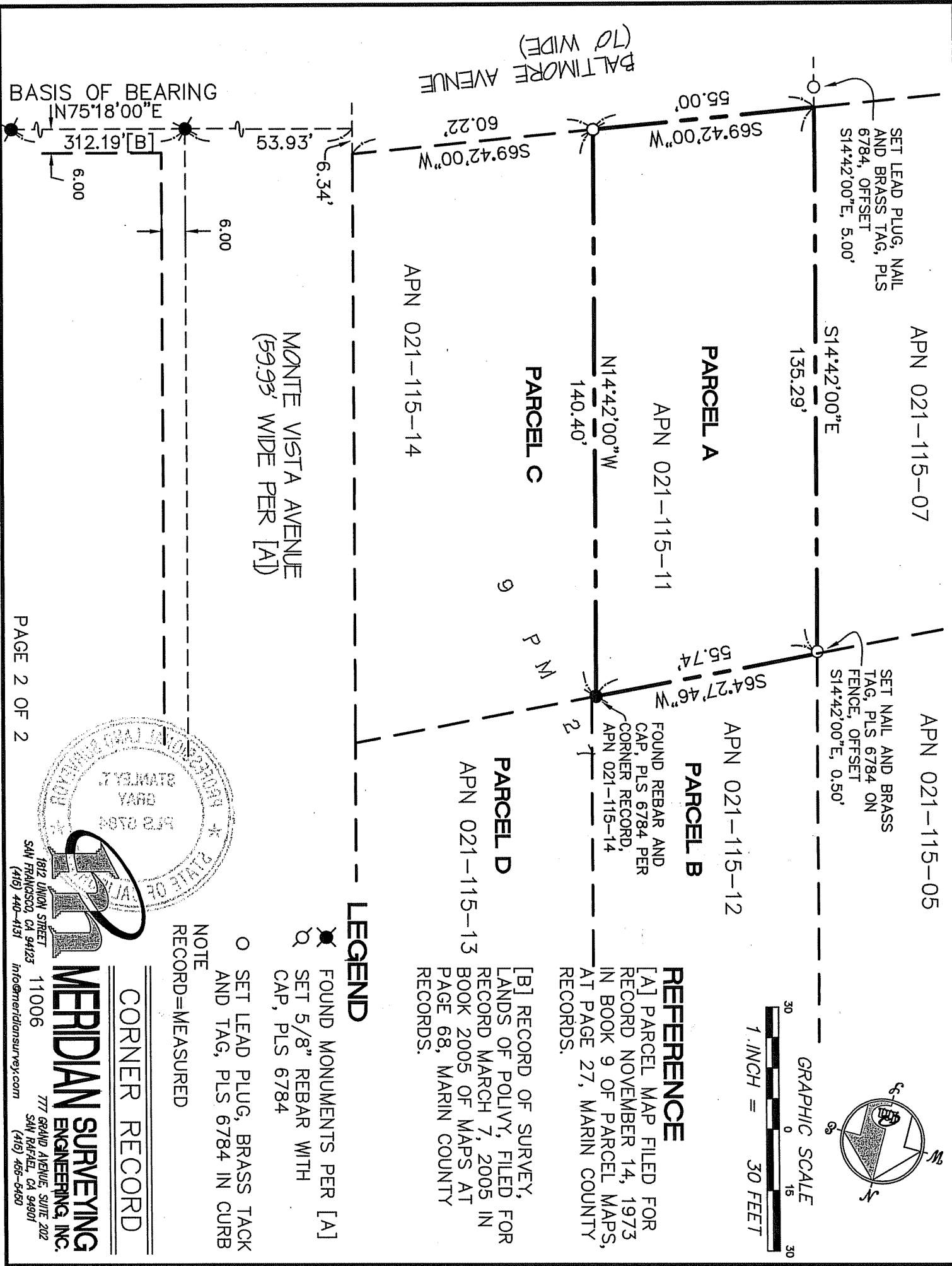
and examined and filed MARCH 8, 2011

Signed [Signature] P.L.S. or R.C.E. No. 7128

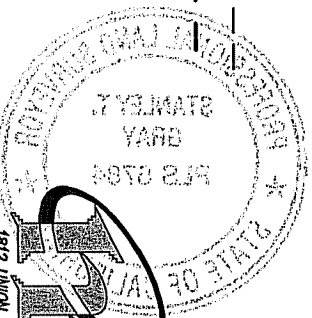
Title COUNTY SURVEYOR

County Surveyor's Comment _____





BASIS OF BEARING
 N75°18'00"E



MERIDIAN SURVEYING, INC.
 1812 UNION STREET
 SAN FRANCISCO, CA 94123
 (415) 440-4131
 info@meridiansurvey.com

777 GRAND AVENUE, SUITE 202
 SAN RAFAEL, CA 94901
 (415) 465-6450