

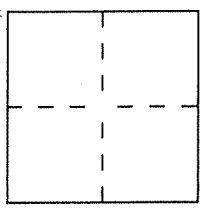
CORNER RECORD

Document Number A. P. # 21-113-26,27

City of Larkspur

County of Marin, California

Brief Legal Description Ap # 021-113-26, Pcl One of 2 PM 93



CORNER TYPE

- Government Corner
- Meander
- Rancho
- Date of Survey 2/8/00
- Control
- Property
- Other

COORDINATES (Optional)

N. _____
 E. _____
 Zone _____ Datum _____
 Elev. _____

Corner — Left as found Found and tagged Established Reestablished Rebuilt

Identification and type of corner found: Evidence used to identify or procedure used to establish or reestablish the corner:

Found Original Iron Pipes of 2 PM 93

A description of the physical condition of the monument as found and as set or reset:

Set like stakes with 3/4" Iron Pipes & Plug LS 5290

SURVEYOR'S STATEMENT

This Corner Record was prepared by me or under my direction in conformance with the Land Surveyors' Act on Feb 8th 2000.

Signed David P. Harp L.S. or R.C.E. Number LS 5290



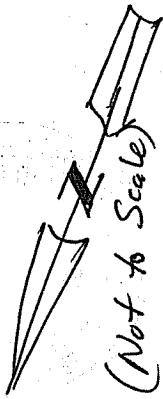
COUNTY SURVEYOR'S STATEMENT

This Corner Record was received 2-9-2000 and examined and filed 2-10-2000.

Signed John M. Wooley Title DEPUTY



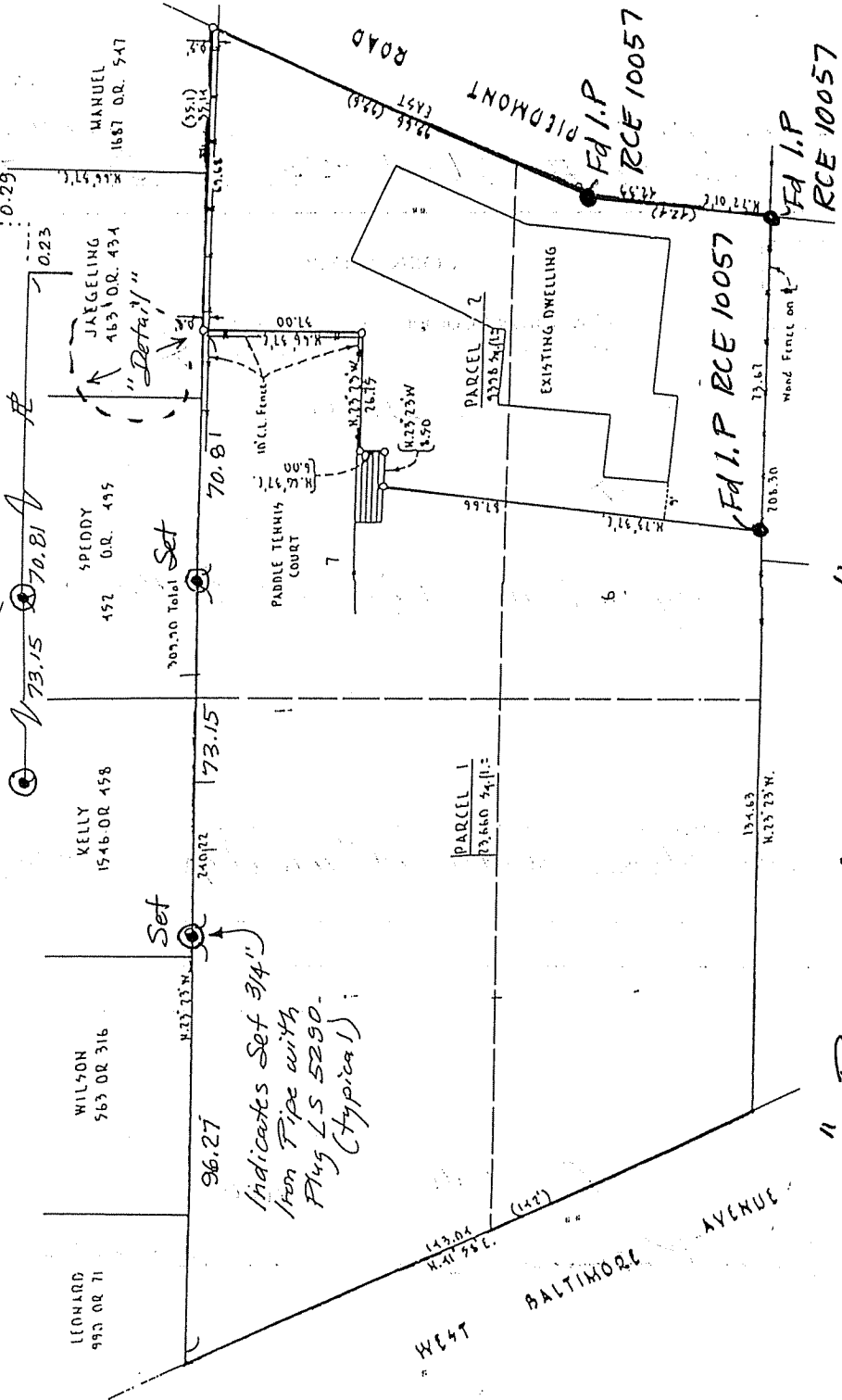
County Surveyor's Comment _____



(Not to Scale)

(not orig.)

N 23° 23' W Fd 1/2 bar L.S. 6135



"Faction of 2 FM 93"

WEST BALTIMORE AVENUE

PIDMONT ROAD
F.d.I.P. RCE 10057

F.d.I.P. RCE 10057

F.d.I.P. RCE 10057