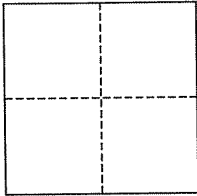


**CORNER RECORD**

City of Larkspur

Document Number AP# 021-102-12  
County of Marin, California

Brief Legal Description Lots 2 & 3, 3 RM 83



**CORNER TYPE**

Government Corner  Control   
Meander  Property   
Rancho  Other   
Date of Survey \_\_\_\_\_

**COORDINATES (Optional)**

N. \_\_\_\_\_  
E. \_\_\_\_\_  
Zone \_\_\_\_\_ NAD27  NAD83   
NAD83 Epoch \_\_\_\_\_  
Elev. \_\_\_\_\_  
Vert. Datum: NGVD29  NAVD88   
Meas. Units: Metric  Imperial

**Corner-** Left as found  Found and tagged  Established  Reestablished  Rebuilt

Identification and type of corner found: Evidence used to identify or procedure used to establish or reestablish the corner:  
Found a Nail set per 12 RS 69 and the Fence Corner used as the Basis of Bearing for 12 RS 69.

A description of the physical condition of the monument as found and as set or reset: Set Nail, Nail & Tag, and Iron Pipe per 12 RS 69, as shown.

**SURVEYOR'S STATEMENT**

This corner Record was prepared by me or under my direction in conformance with the Land Surveyor's Act on February 7, 2007

Signed Jay R. H. [Signature] P.L.S. or R.C.E. No. 30465



**COUNTY SURVEYOR'S STATEMENT**

This Corner Record was received FEBRUARY 22, 2007 and examined and filed MARCH 26, 2007

Signed [Signature] P.L.S. or R.C.E. No. 7128  
Title COUNTY SURVEYOR

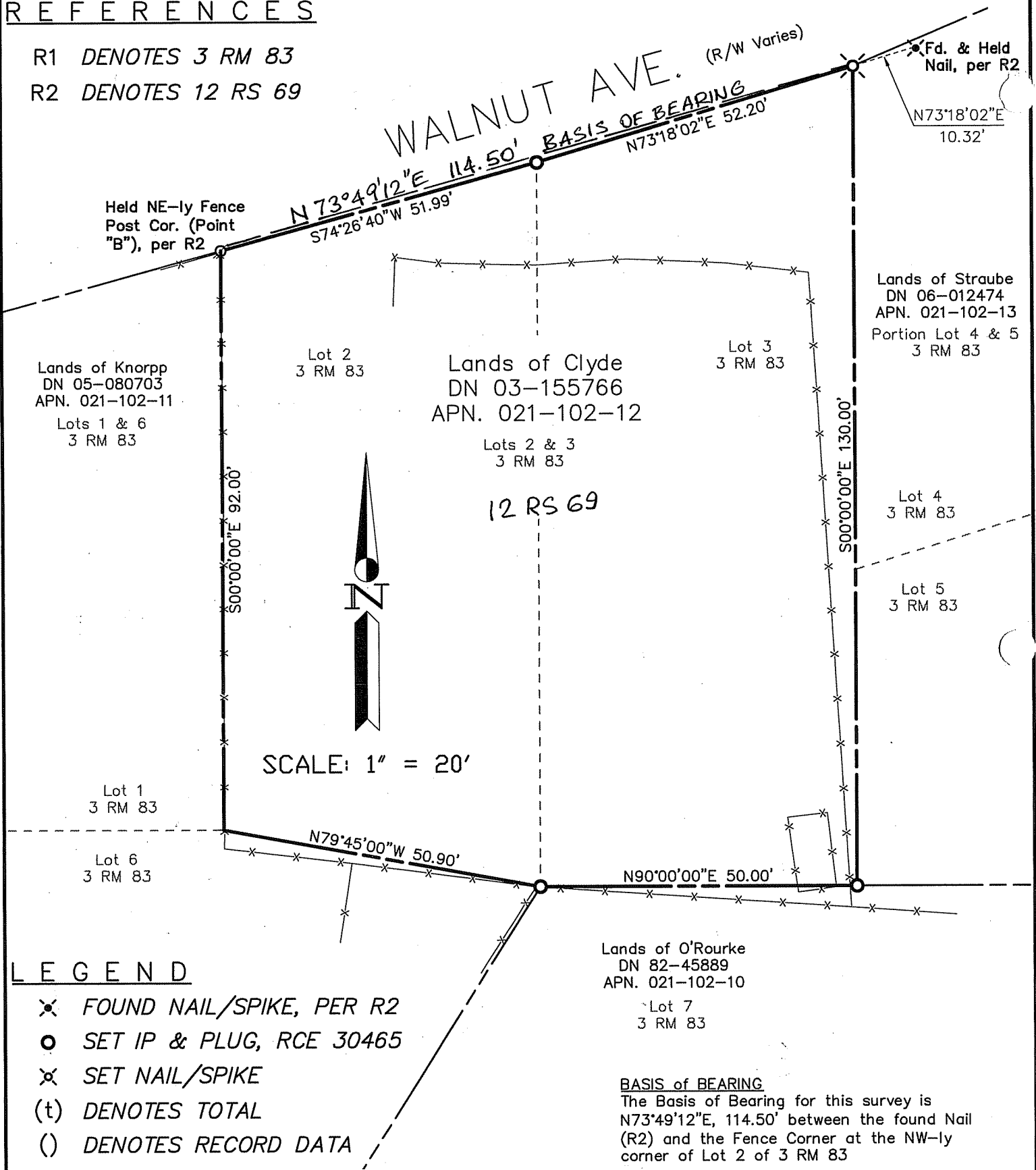


**County Surveyor's Comment** \_\_\_\_\_

REFERENCES

R1 DENOTES 3 RM 83

R2 DENOTES 12 RS 69



LEGEND

- ✕ FOUND NAIL/SPIKE, PER R2
- SET IP & PLUG, RCE 30465
- ✕ SET NAIL/SPIKE
- (t) DENOTES TOTAL
- ( ) DENOTES RECORD DATA

Lands of O'Rourke  
DN 82-45889  
APN. 021-102-10

Lot 7  
3 RM 83

BASIS of BEARING

The Basis of Bearing for this survey is N73°49'12"E, 114.50' between the found Nail (R2) and the Fence Corner at the NW-ly corner of Lot 2 of 3 RM 83

Note: All distances are in feet and decimals thereof.

|                                      |           |          |       |
|--------------------------------------|-----------|----------|-------|
| SHEET                                | 1         | OF       | 1     |
| SCALE:                               | 1" = 20'  | DESIGN:  | P.R.  |
| DATE:                                | Feb. 2007 | DRAWN:   | P.R.  |
| FILE:                                | 2005-126  | CHECKED: | J.L.H |
| 2005-126\dwg\SP-Topo-ROS.dwg,Cor-Rec |           |          |       |

**J.L. ENGINEERING**  
CIVIL ENGINEERS-LAND SURVEYORS  
1539 4th ST., SAN RAFAEL, CA. 94901 (415) 457-6647

Corner Record

Lands of Clyde - 51 Walnut Ave.  
AP No. 021-102-12, Larkspur Marin County, CA