

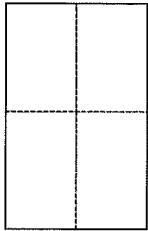
CORNER RECORD

Document Number 021-092-26

City of LARKSPUR

County of Marin, California

Brief Legal Description A.P.N. 021-092-26



CORNER TYPE

Government Corner Control
Meaneder Property
Rancho Other
Date of Survey AUG 13 2013

COORDINATES (Optional)

N. _____
E. _____
Zone _____ NAD27 NAD83
NAD83 Epoch _____
Elev. _____
Vert. Datum: NGVD29 NAVD88
Meas. Units: Metric Imperial

Corner – Left as found Found and tagged Established Reestablished Rebuilt

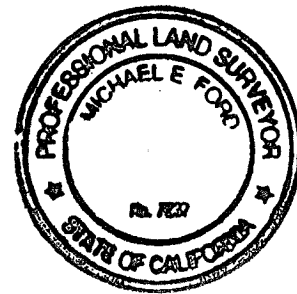
Identification and type of corner found: Evidence used to identify or procedure used to establish or reestablish the corner:

Monuments per 31 O.S. 32 were found in record position and used to reestablish the location of the lands of Donnelly as shown on said survey.

A description of the physical condition of the monument as found and as set or reset: set 1/2" iron pipe, LS 7237 set rivet & brass tag, LS 7237

SURVEYOR'S STATEMENT

This Corner Record was prepared by me or under my direction in conformance with the Land Surveyor's Act on AUG. 26 2013
Signed Michael E. Ford P.L.S. or R.C.E. No. 7237



COUNTY SURVEYOR'S STATEMENT

This Corner Record was received AUGUST 29, 2013
and examined and filed OCTOBER 7, 2013
Signed Richard Smith P.L.S. or R.C.E. No. 7821
Title DEPUTY CO. SURVEYOR

County Surveyor's Comment

Donnelly E'ly corners retracedable from 31-05-32 but nothing was set prior to this Corner Record.

RECORD OF
SURVEY
31 OS 32

CUNNINGHAM
2679 O.R. 436

BASIS OF BEARINGS
S 7°09'00" W 172.00'

DONNELLEY
86-35475

LEGEND

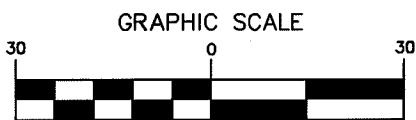
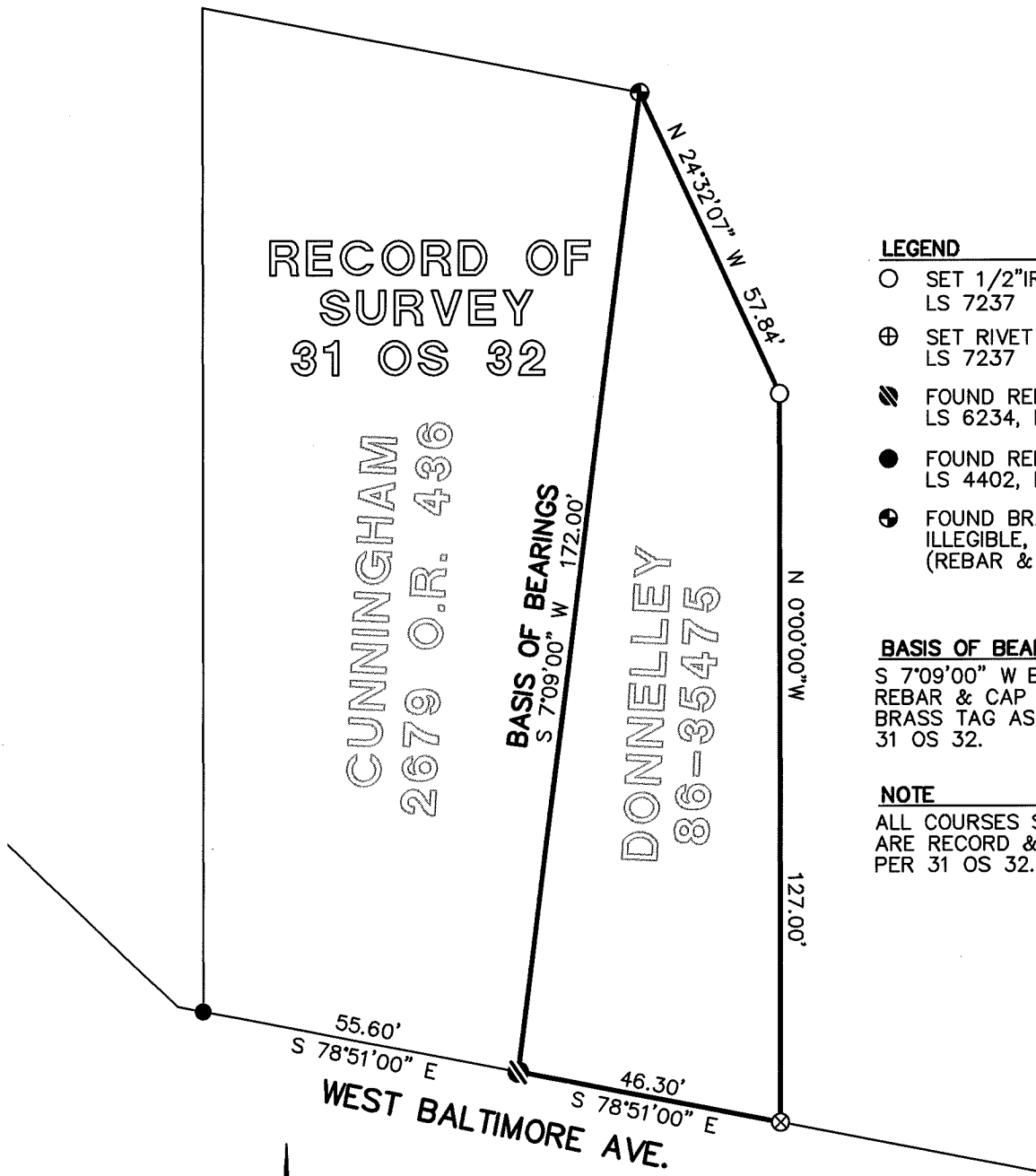
- SET 1/2" IRON PIPE
LS 7237
- ⊕ SET RIVET & BRASS TAG
LS 7237
- ▨ FOUND REBAR & CAP
LS 6234, PER 31 OS 32
- FOUND REBAR & CAP
LS 4402, PER 31 OS 32
- ⊙ FOUND BRASS TAG,
ILLEGIBLE, PER 31 OS 32
(REBAR & CAP PER RECORD)

BASIS OF BEARINGS

S 7°09'00" W BETWEEN A FOUND
REBAR & CAP AND A FOUND
BRASS TAG AS SHOWN ON
31 OS 32.

NOTE

ALL COURSES SHOWN HEREON
ARE RECORD & MEASURED
PER 31 OS 32.



(IN FEET)
1 inch = 30 ft.



2300 bethards drive, suite J
santa rosa, california 95405
p 707.542.8513 - f 707.542.1825
www.michaelfordinc.com