

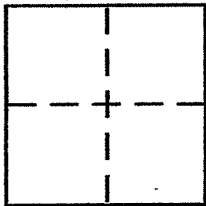
CORNER RECORD

Document Number 29.091.04

City of MILL VALLEY

County of MARIN, California

Brief Legal Description LANDS OF CHIN AS SURVEYED PER 1998 MAP 121



CORNER TYPE

Government Corner Control
Meander Property
Rancho Other
Date of Survey 7/22/2010

COORDINATES (Optional)

N. _____
E. _____
Zone NAD27 NAD83
NAD83 Epoch _____
Elev. _____
Vert. Datum: NGVD29 NAVD88
Meas. Units: Metric Imperial

Corner - Left as found Found and tagged Established Reestablished Rebuilt

Identification and type of corner found: Evidence used to identify or procedure used to establish or reestablish the corner:

REESTABLISH A PORTION OF THE NORTHERLY LINE OF THE LANDS OF CHIN AS SAID LAND IS SHOWN UPON 1998 MAPS 121. LINE REESTABLISHED FROM EXISTING SURVEY MARKERS OF SAID SURVEY. SEE REVERSE SIDE FOR DETAILS

A description of the physical condition of the monument as found and as set or reset:

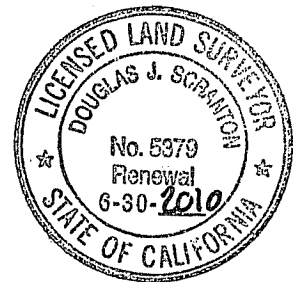
SET 1/2" REBAR WITH YELLOW PLASTIC CAP ATTACHED TO TOP OF REBAR & DRIVEN FLUSH TO SURROUNDING GRADE. CAP EMBOSSED "SCRANTON, PL5 5379." SEE REVERSE SIDE FOR LOCATIONS OF POINTS SET.

SURVEYOR'S STATEMENT

This Corner Record was prepared by me or under my direction in conformance with

the Land Surveyor's Act on AUGUST 4th 2010

Signed [Signature] P.L.S or R.C.E. No. PL5 5379



COUNTY SURVEYOR'S STATEMENT

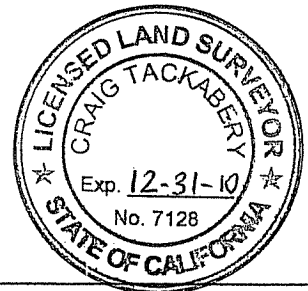
This Corner Record was received AUGUST 6, 2010

and examined and filed SEPTEMBER 7, 2010

Signed [Signature] P.L.S or R.C.E. No. 7128

Title COUNTY SURVEYOR

County Surveyor's Comment _____



PREPARED BY: DJ SCRANTON SURVEYING PETALUMA, CA

3/4" IRON PIPE
LS 2897 (R1)

10' LANE



SCALE : 1" = 10'

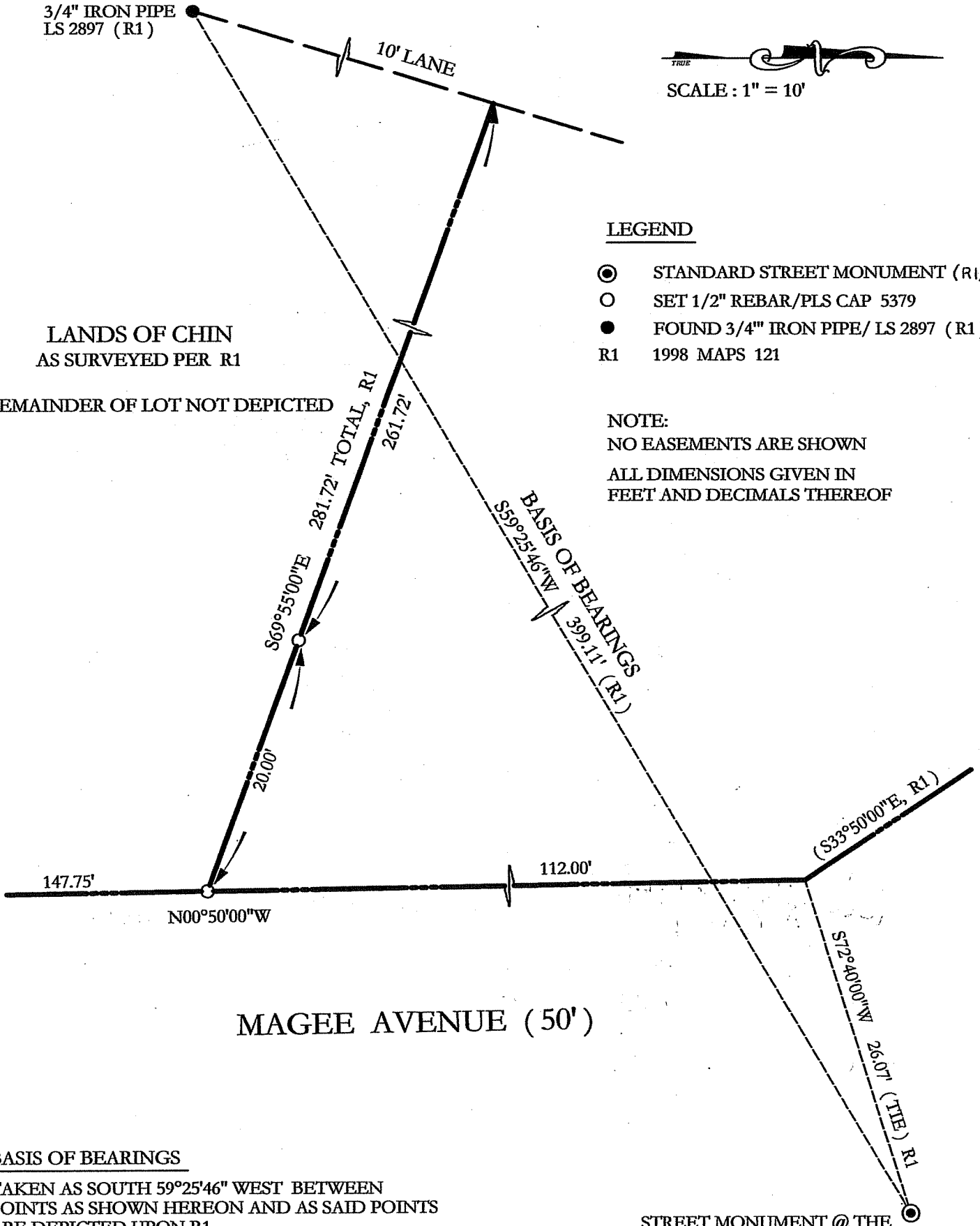
LANDS OF CHIN
AS SURVEYED PER R1

REMAINDER OF LOT NOT DEPICTED

LEGEND

- ⊙ STANDARD STREET MONUMENT (R1)
- SET 1/2" REBAR/PLS CAP 5379
- FOUND 3/4" IRON PIPE/ LS 2897 (R1)
- R1 1998 MAPS 121

NOTE:
NO EASEMENTS ARE SHOWN
ALL DIMENSIONS GIVEN IN
FEET AND DECIMALS THEREOF



BASIS OF BEARINGS

TAKEN AS SOUTH 59°25'46" WEST BETWEEN
POINTS AS SHOWN HEREON AND AS SAID POINTS
ARE DEPICTED UPON R1.

STREET MONUMENT @ THE
INTERSECTION OF SUMMIT
AVE AND MAGEE AVE