

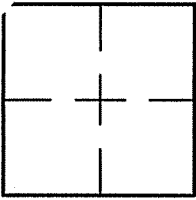
CORNER RECORD

Document Number A.P. 021-085-57

City of LARKSPUR

County of MARIN, California

Brief Legal Description LOT 5 PER 22 P.M. 26



CORNER TYPE

COORDINATES (Optional)

Government Corner  Control   
 Meander  Property   
 Rancho  Other   
 Date of Survey 3/20/08

N. \_\_\_\_\_  
 E. \_\_\_\_\_  
 Zone \_\_\_\_\_ NAD27  NAD83   
 NAD83 Epoch \_\_\_\_\_  
 Elev. \_\_\_\_\_  
 Vert. Datum: NGVD29  NAVD88   
 Meas. Units: Metric  Imperial

Corner- Left as found  Found and tagged  Established  Reestablished  Rebuilt

Identification and type of corner found: Evidence used to identify or procedure used to establish or reestablish the corner:  
REESTABLISHED A PORTION OF LOT 5 PER 22 P.M. 26 BY USING FOUND PIPES AND TAGS PER 22 P.M. 26 AND AS SHOWN ON SHEET 2.

A description of the physical condition of the monument as found and as set or reset: SEE SHEET 2.

SURVEYOR'S STATEMENT

This Corner Record was prepared by me or under my direction in conformance with

the Land Surveyor's Act on MARCH 20, 2008

Signed Lawrence P. Doyle P.L.S. or R.C.E. No. P.L.S. 4694



COUNTY SURVEYOR'S STATEMENT

This Corner Record was received MARCH 24, 2008

and examined and filed APRIL 30, 2008

Signed \_\_\_\_\_ P.L.S. or R.C.E. No. 7128

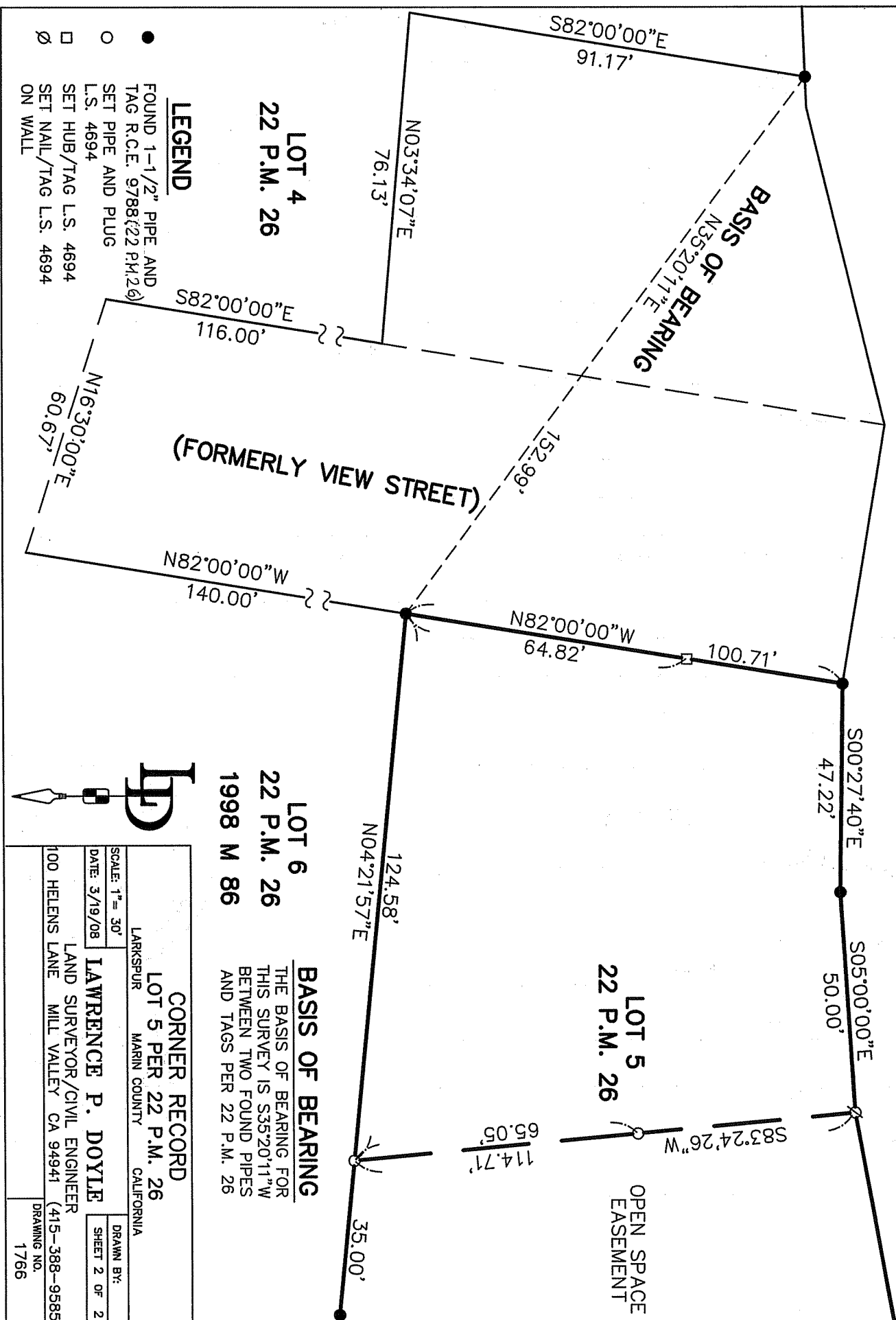
Title COUNTY SURVEYOR



County Surveyor's Comment \_\_\_\_\_

LAUREL AVENUE

LAUREL AVENUE



LOT 4  
22 P.M. 26

LOT 6  
22 P.M. 26  
1998 M 86

LOT 5  
22 P.M. 26

OPEN SPACE  
EASEMENT

**LEGEND**

- FOUND 1-1/2" PIPE AND TAG R.C.E. 9788(22 P.M.26)
- SET PIPE AND PLUG L.S. 4694
- SET HUB/TAG L.S. 4694
- ∅ SET NAIL/TAG L.S. 4694 ON WALL

(FORMERLY VIEW STREET)

**CORNER RECORD**

LOT 5 PER 22 P.M. 26

LARKSPUR

MARIN COUNTY CALIFORNIA

LAWRENCE P. DOYLE

LAND SURVEYOR/CIVIL ENGINEER  
100 HELENS LANE MILL VALLEY CA 94941 (415-388-9585)

SCALE: 1" = 30'  
DATE: 3/19/08

DRAWN BY:  
SHEET 2 OF 2

DRAWING NO.  
1766