

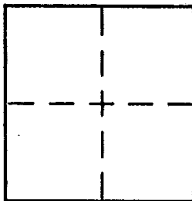
CORNER RECORD

Document Number APN 21-085-08

City of LARKSPUR

County of MARIN, California

Brief Legal Description THE EAST LINE OF WEBB/SCHWARZ PER DN 2012-0063398



CORNER TYPE

- Government Corner Control
- Meander Property
- Rancho Other
- Date of Survey _____

COORDINATES (Optional)

- N. _____
- E. _____
- Zone _____ NAD27 NAD83
- NAD83 Epoch _____
- Elev. _____
- Vert. Datum: NGVD29 NAVD88
- Meas. Units: Metric Imperial

Corner - Left as found Found and tagged Established Reestablished Rebuilt

Identification and type of corner found: Evidence used to identify or procedure used to establish or reestablish the corner:
RE-ESTABLISHED EAST PROPERTY LINE OF THE LANDS OF
WEBB/SCHWARZ, SHOWN AS "UNKNOWN OWNER" PER 12 RS 85
RECOVERED ORIGINAL MONUMENTS PER 12 RS 35 WITH
NO MATERIAL DISCREPANCY.
* SEE EXHIBIT ON SHEET 2.

A description of the physical condition of the monument as found and as set or reset:
SET 5/8" REBAR & CAP STAMPED PLS 6784
SET TACK & BRASS TAG STAMPED PLS 6784
* SEE EXHIBIT ON SHEET 2.

SURVEYOR'S STATEMENT

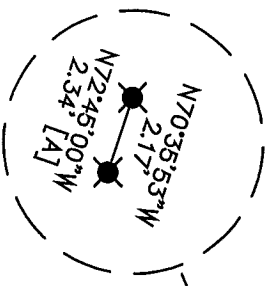
This Corner Record was prepared by me or under my direction in conformance with
the Land Surveyor's Act on 7123 2013
Signed [Signature] P.L.S or R.C.E. No. 6784

COUNTY SURVEYOR'S STATEMENT

This Corner Record was received MAY 28th, 2013
and examined and filed JULY 24, 2013
Signed [Signature] P.L.S or R.C.E. No. 7821
Title DEPUTY CO. SURVEYOR

County Surveyor's Comment _____





DETAIL
NOT TO SCALE

FOUND 3.5" X 3.5" CONC. MON. [A]

FOUND IRON PIPE [A]

FOUND NAIL [A]

ONYX COURT

BASIS OF BEARING 200.82' (CALC & MEAS.)
 N13°55'11"E
 N16°30'00"E
 153.00' [A]
 144.92' [A]

6' PRIVATE ACCESS EASEMENT PER [A] 377 OR 72
 LOT 7
 4 RM 29

12 RS 35

LANDS OF WEBB AND SCHWARZ
 25 ONYX ST
 APN 021-085-08
 DN 2012-057166

LOT 6
 4 RM 29

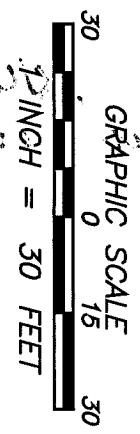
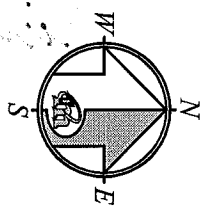
APN 021-085-06
 27 ONYX ST

DN 2012-0063398
 APN 021-085-41

N05°21'15"W 68.50 [A]
 EAST LINE PER [A]

APN 021-085-07
 21 ONYX ST

S15°24'15"E
 10.70 [A]



REFERENCE

[A] RECORD OF SURVEY LANDS OF WIELAND, * FILED FOR RECORD JULY 14TH 1974 IN VOLUME 12 OF MAPS, AT PAGE 35, MARIN COUNTY RECORDS.

LEGEND

- BASIS OF BEARING
- - - PROPERTY LINE
- - - ADJACENT PROPERTY
- DN DOCUMENT NUMBER
- FOUND AS NOTED
- SET 5/8" REBAR WITH CAP, PLS 6784
- SET TACK WITH BRASS TAG, PLS 6784 ON TOP OF 2" x 10" BASEBOARD

NOTE:
 RECORD=MEASURED.

05/23/13

CORNER RECORD

Meridian Surveying, Inc.
 2958 VAN NESS AVENUE (13037) 777 GRAND AVENUE, #202
 SAN FRANCISCO, CA 94109 SAN RAFAEL, CA 94901
 (415) 440-4131 info@meridiansurvey.com (415) 456-5450