

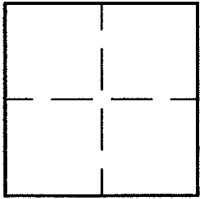
CORNER RECORD

Document Number A.P.# 021-082-10

City of LARKSPUR

County of MARIN, California

Brief Legal Description 2007 M. 13



CORNER TYPE COORDINATES (Optional)

Government Corner Control
Meander Property
Rancho Other
Date of Survey 06/08/15

N. _____
E. _____
Zone _____ NAD27 NAD83
NAD83 Epoch _____
Elev. _____
Vert. Datum: NGVD29 NAVD88
Meas. Units: Metric Imperial

Corner- Left as found Found and tagged Established Reestablished Rebuilt

Identification and type of corner found: Evidence used to identify or procedure used to establish or reestablish the corner:
REESTABLISHED THE NORTHERLY AND EASTERLY LINES OF 2007 M. 13 PER FOUND POINTS AS SHOWN ON SHEET 2

A description of the physical condition of the monument as found and as set or reset: SEE SHEET 2.

SURVEYOR'S STATEMENT

This Corner Record was prepared by me or under my direction in conformance with
the Land Surveyor's Act on JUNE 8 2015
Signed Lawrence P. Doyle P.L.S. or R.C.E. No. P.L.S. 4694



COUNTY SURVEYOR'S STATEMENT

This Corner Record was received JULY 13, 2015
and examined and filed DECEMBER 23, 2015
Signed [Signature] P.L.S. or R.C.E. No. 7821
Title County Surveyor

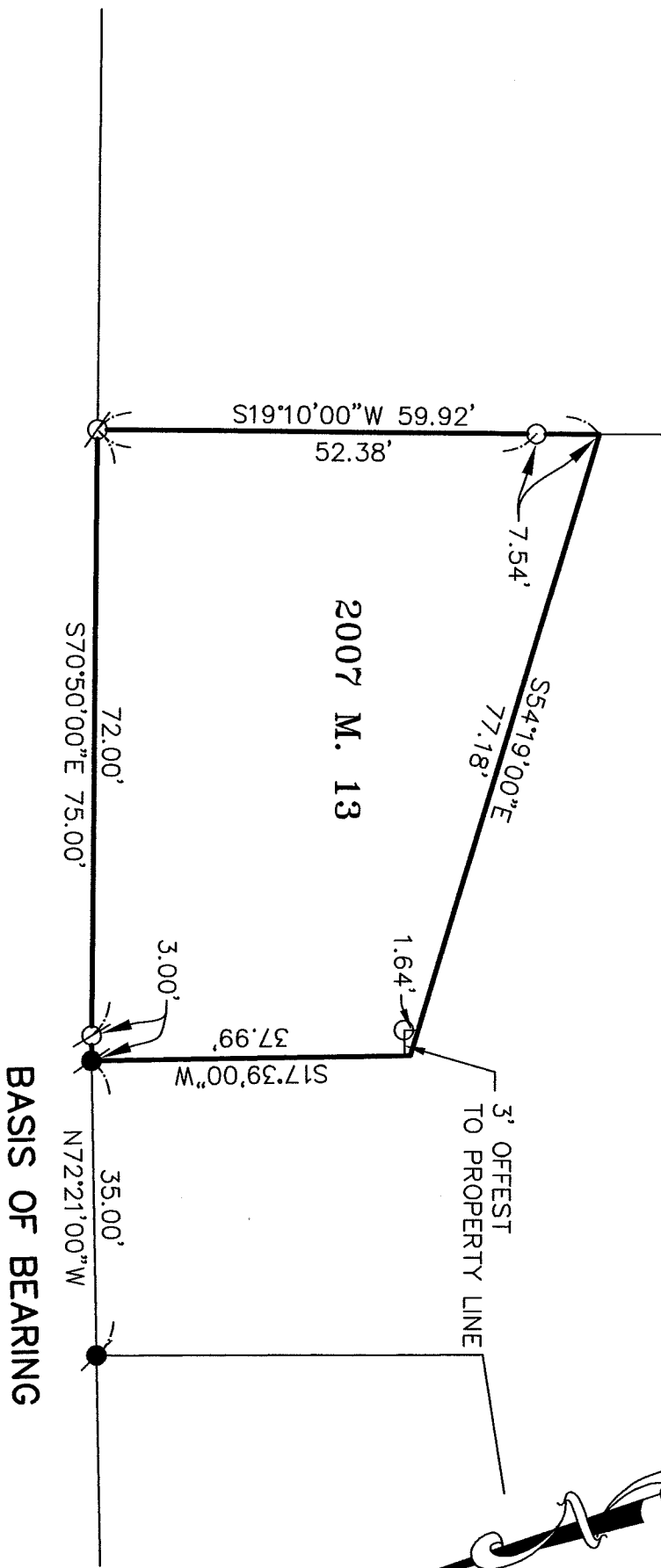
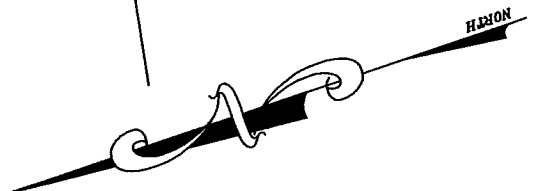


County Surveyor's Comment _____

BASIS OF BEARING

THE BASIS OF BEARING FOR THIS SURVEY IS N72°21'00"W BETWEEN FOUND NAILS & TAGS L.S. 3775 PER 2007 M. 13 AND 13 O.S. 24.

13 O.S. 24
12 P.M. 58

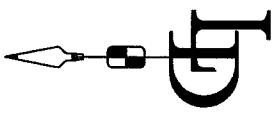


MADRONE AVENUE
60' R/W

BASIS OF BEARING

LEGEND

- FOUND LEAD PLUG & TAG, L.S. 3775
- SET NAIL & TAG, L.S. 4694
- SET 3/4" PIPE AND PLUG L.S. 4694



| | |
|--|---------------------------|
| CORNER RECORD 2007 M. 13 | |
| LARKSPUR MARIN COUNTY | CALIFORNIA |
| LAWRENCE P. DOYLE LAND SURVEYOR/CIVIL ENGINEER 100 HELENS LANE MILL VALLEY CA 94941 (415-388-9585) | |
| SCALE: 1" = 20' DATE: 6/8/2015 | DRAWN BY: SHEET 1 OF 1 |
| DRAWING NO. 2585-15 | |