

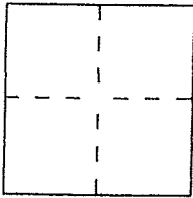
CORNER RECORD

Document Number 021-081-37

City of Larkspur

County of Marin, California

Brief Legal Description Marin Assessor's Parcel 021-081-37



CORNER TYPE

Government Corner Control
Meander Property
Rancho Other
Date of Survey _____

COORDINATES
(Optional)

N. _____
E. _____
Zone _____ Datum _____
Elev. _____

Corner — Left as found Found and tagged Established Reestablished Rebuilt

Identification and type of corner found: Evidence used to identify or procedure used to establish or reestablish the corner:

Found monuments per the Record of Survey Map known as 2000 Maps 019, Marin County Records

A description of the physical condition of the monument as found and as set or reset:

Set Spike + Tag and set nail & Tag LS 5290 as shown on the "Sketch Map" (over)

SURVEYOR'S STATEMENT

This Corner Record was prepared by me or under my direction in conformance with the Land Surveyors' Act on June 18, 2013

Signed David Harp L.S. or R.C.E. Number LS 5290



COUNTY SURVEYOR'S STATEMENT

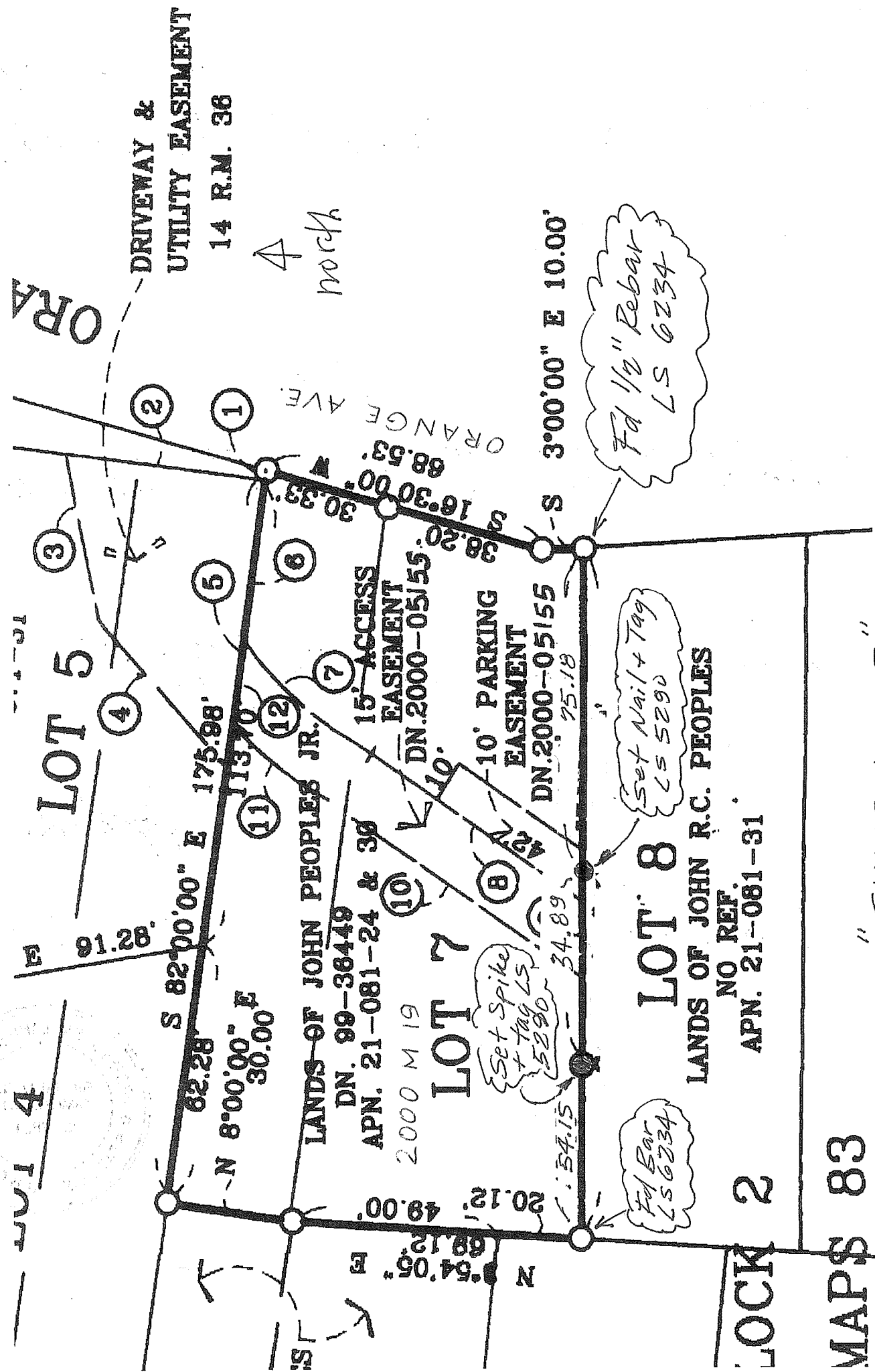
This Corner Record was received JUNE 21, 2013 and examined

and filed July 29th 2013

Signed Richard Simonitch Title DEPUTY CO. SURVEYOR



County Surveyor's Comment _____



DRIVEWAY &
UTILITY EASEMENT
14 R.M. 36

North

ORANGE AVE

LOT 4

LOT 5

LOT 7

LOT 8

LANDS OF JOHN R.C. PEOPLES
NO REF.
APN. 21-081-31

BLOCK 2

MAPS 83

Fd 1/2" Rebar
LS 6234

Set Nail + Tag
LS 5290

Set Spike
+ Tag LS
5290

Fd Bar
LS 6234

"SKETCH MAP"
(not to scale)