

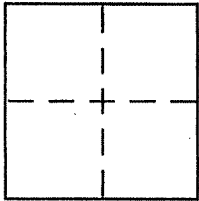
CORNER RECORD

Document Number APN 021-073-17

City of E. Larkspur

County of _____, California

Brief Legal Description Lot as shown on 2000 Maps 187



CORNER TYPE

Government Corner Control
Meander Property
Rancho Other
Date of Survey 05-11-11

COORDINATES (Optional)

N. _____
E. _____
Zone _____ NAD27 NAD83
NAD83 Epoch _____
Elev. _____
Vert. Datum: NGVD29 NAVD88
Meas. Units: Metric Imperial

Corner - Left as found Found and tagged Established Reestablished Rebuilt

Identification and type of corner found: Evidence used to identify or procedure used to establish or reestablish the corner:

See page 2 of 2

A description of the physical condition of the monument as found and as set or reset:

See page 2 of 2

SURVEYOR'S STATEMENT

This Corner Record was prepared by me or under my direction in conformance with the Land Surveyor's Act on 5/16/2011

Signed [Signature] P.L.S. or R.C.E. No. 6784



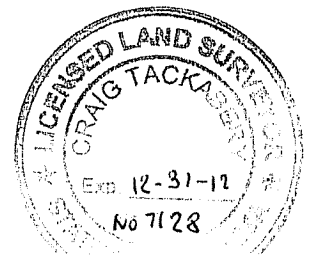
COUNTY SURVEYOR'S STATEMENT

This Corner Record was received NOVEMBER 15, 2011

and examined and filed DECEMBER 22, 2011

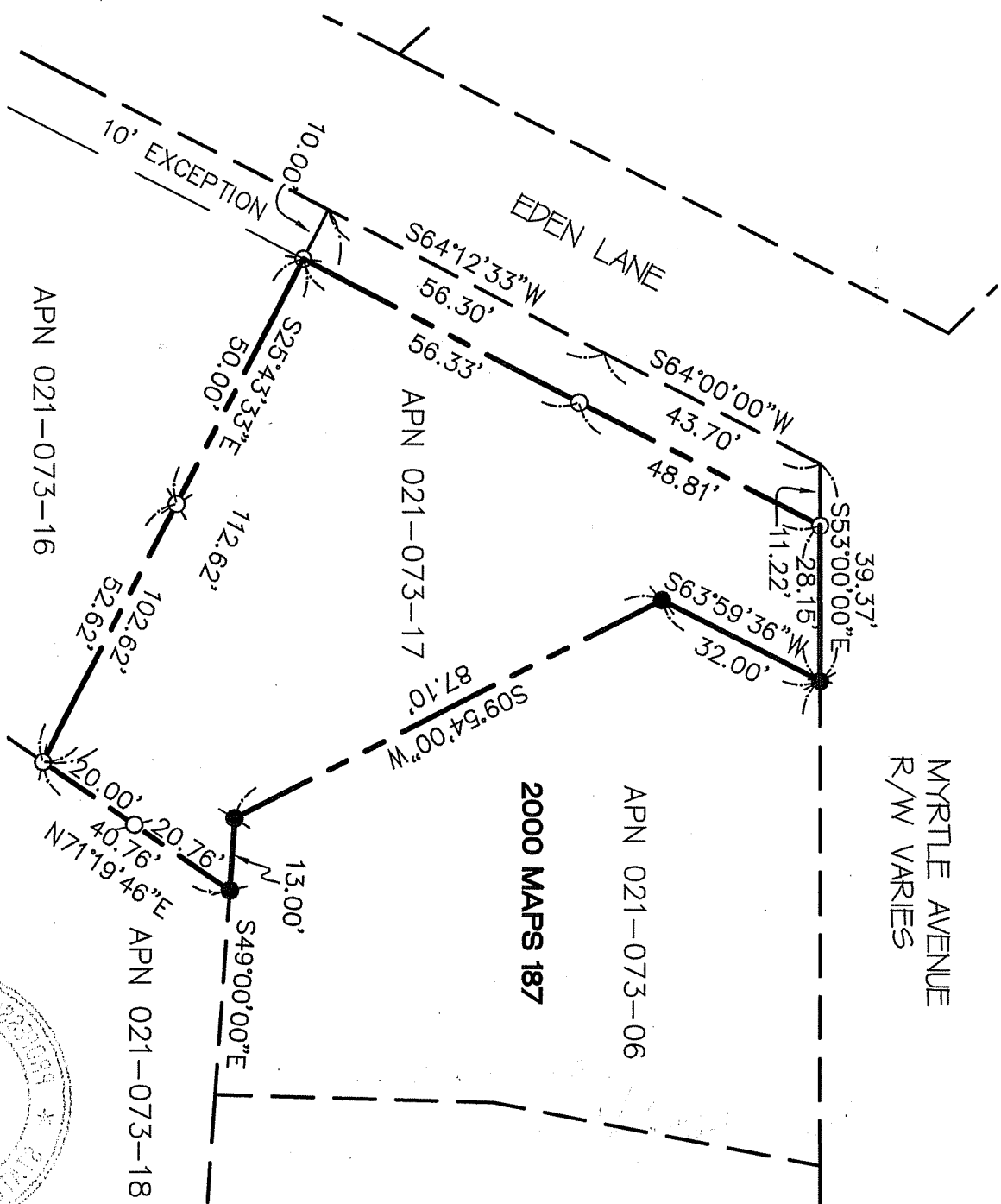
Signed [Signature] P.L.S. or R.C.E. No. 7128

Title COUNTY SURVEYOR



County Surveyor's Comment _____

MYRTLE AVENUE
R/W VARIES



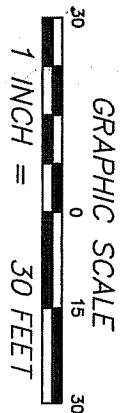
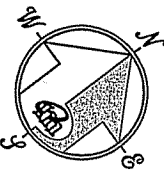
2000 MAPS 187

APN 021-073-06

APN 021-073-16

APN 021-073-17

APN 021-073-18



LEGEND

- FD REBAR & CAP, LS6234 PER [A]
- SET 5/8" REBAR WITH CAP, PLS 6784
- SET MAGNAIL AND WASHER, PLS 6784
- ⊗ SET LEAD PLUG, BRASS TACK AND TAG, PLS 6784

NOTE
RECORD=MEASURED

CORNER RECORD

REFERENCE

[A] RECORD OF SURVEY, LANDS OF PARROT FILED FOR RECORD OCTOBER 30, 2000 IN BOOK 2000 OF MAPS, AT PAGE 187, MARIN COUNTY RECORDS.



MERIDIAN SURVEYING, INC.
11050
777 GRAND AVENUE, SUITE 202
SAN RAFAEL, CA 94901
(415) 456-6450

1812 UNION STREET
SAN FRANCISCO, CA 94123
(415) 440-4131
info@meridiansurveying.com