

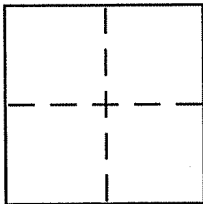
CORNER RECORD

Document Number APN 021-073-07

City of LARKSPUR

County of Marin, California

Brief Legal Description SEE 2000 M 187



CORNER TYPE

Government Corner Control
Meander Property
Rancho Other
Date of Survey _____

COORDINATES (Optional)

N. _____
E. _____
Zone _____ NAD27 NAD83
NAD83 Epoch _____
Elev. _____
Vert. Datum: NGVD29 NAVD88
Meas. Units: Metric Imperial

Corner - Left as found Found and tagged Established Reestablished Rebuilt

Identification and type of corner found: Evidence used to identify or procedure used to establish or reestablish the corner:

See page 2 of 2

A description of the physical condition of the monument as found and as set or reset:

See page 2 of 2

SURVEYOR'S STATEMENT

This Corner Record was prepared by me or under my direction in conformance with the Land Surveyor's Act on 1/8 2009

Signed [Signature] P.L.S or R.C.E. No. 6784



COUNTY SURVEYOR'S STATEMENT

This Corner Record was received JANUARY 13, 2009

and examined and filed JANUARY 14, 2009

Signed [Signature] P.L.S or R.C.E. No. 7128

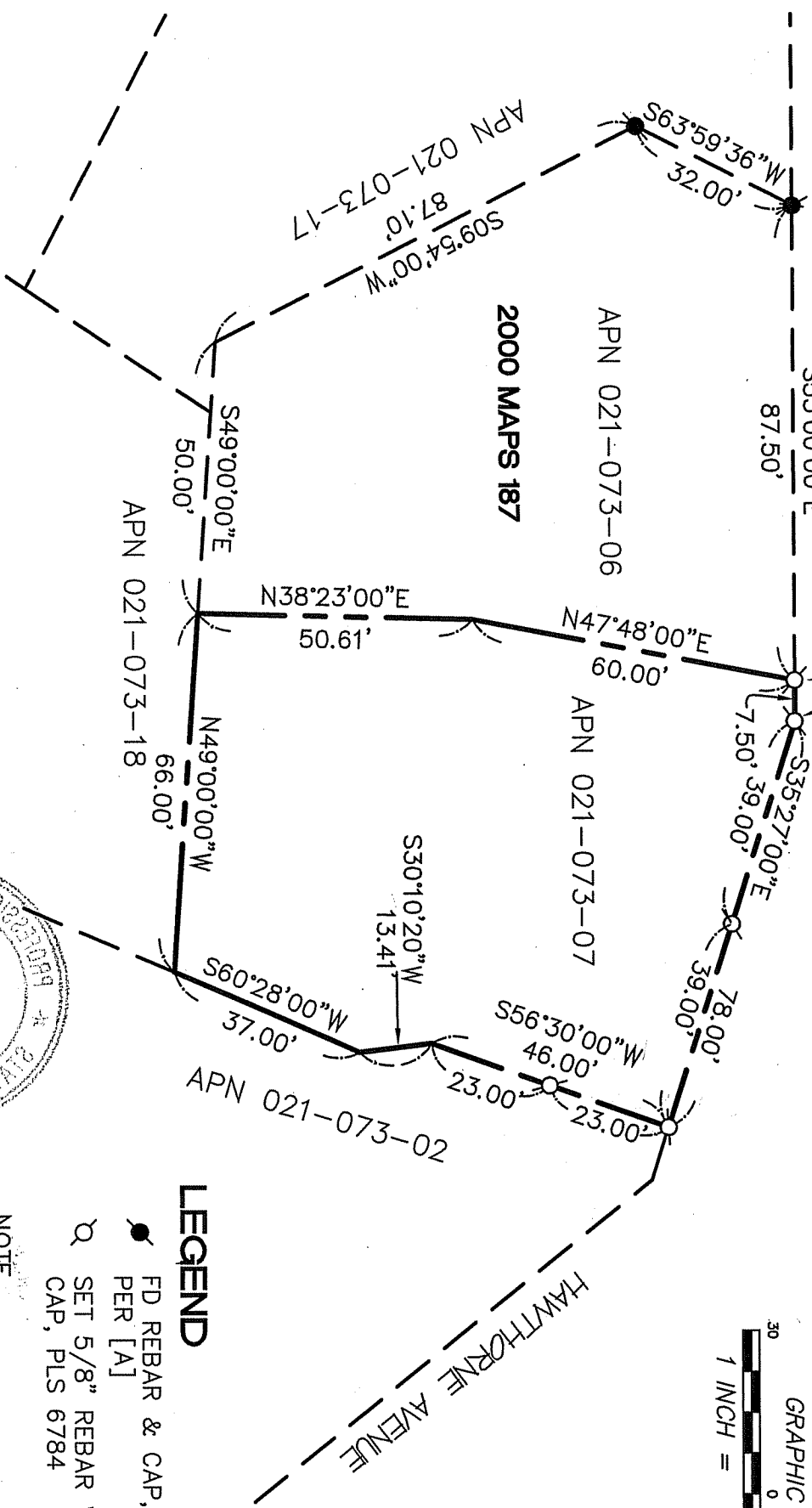
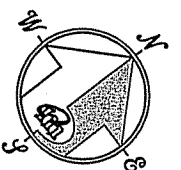
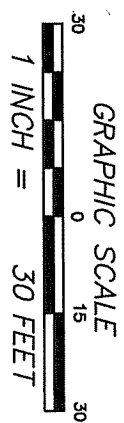
Title COUNTY SURVEYOR



County Surveyor's Comment _____

MYRTLE AVENUE
R/W VARIES
BASIS OF BEARING
S53°00'00"E

FD REBAR & CAP, LS 6234
PER [A]: POINT LOST DURING
CONSTRUCTION. REPLACED WITH
REBAR & CAP, PLS 6784.



LEGEND

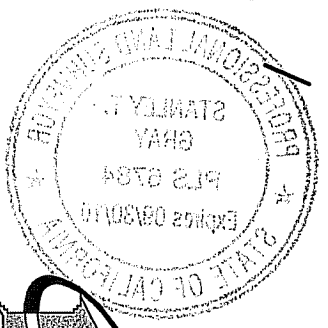
- FD REBAR & CAP, LS6234 PER [A]
- ⊗ SET 5/8" REBAR WITH CAP, PLS 6784

NOTE
RECORD=MEASURED

CORNER RECORD

REFERENCE

[A] RECORD OF SURVEY, LANDS OF PARROT FILED FOR RECORD OCTOBER 30, 2000 IN BOOK 2000 OF MAPS, AT PAGE 187, MARIN COUNTY RECORDS.



Meridian Surveying, Inc.
 1812 UNION STREET
 SAN FRANCISCO, CA 94123
 (415) 440-4131
 info@meridiansurvey.com

08049
 777 GRAND AVENUE, SUITE 202
 SAN RAFAEL, CA 94901
 (415) 456-6460