

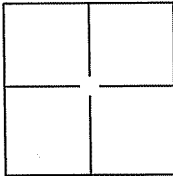
CORNER RECORD

Document Number A.P.N. 021-071-32

City of Larkspur

County of Marin, California

Brief Legal Description Lot 6, Map of Lark Highlands, 15 Highland Court, 14 RM 36.



CORNER TYPE

Government Corner Control
Meander Property
Rancho Other

Date of Survey 22 December 2009

COORDINATES(Optional)

N. _____
E. _____
Zone _____ NAD27 NAD83
NAD83 Epoch _____
Elev. _____
Vert. Datum: NGVD29 NADV88
Meas. Units: Metric Imperial

Corner - Left as found Found and tagged Established Reestablished Rebuilt

Identification and type of corner found: Evidence used to identify or procedure used to establish or reestablish the corner:
Found Standard Street Monuments (2) and Found Chiseled "X" in PG&E Box (1).

A description of the physical condition of the monument as found and as set or reset: _____
Set SE and SW corners (2 corners) on Lot 6, 14 RM 36, and two Ginney points along southerly line,
See Exhibit "A".

SURVEYOR'S STATEMENT

This Corner Record was prepared by me or under my direction in conformance with
the Land Surveyor's Act on DEC. 28, 2009.

Signed [Signature] License or R.C.E. No.: 18221

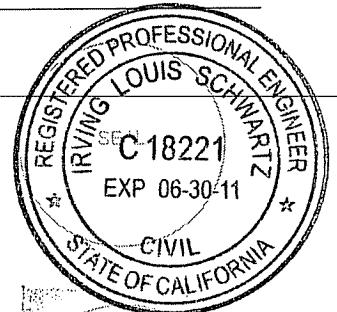
COUNTY SURVEYOR'S STATEMENT

This Corner Record was received DECEMBER 30, 2009 and examined
and filed JANUARY 27, 2010

Signed [Signature] P.L.S. or R.C.E. No.: 7128

Title COUNTY SURVEYOR

County Surveyor's Comment _____



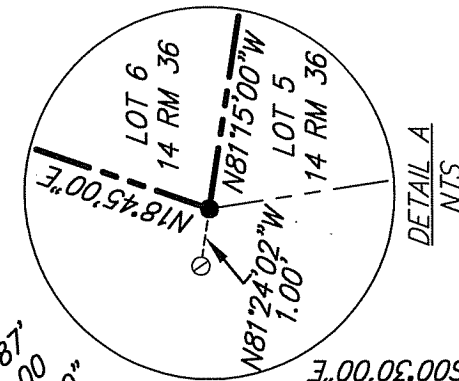
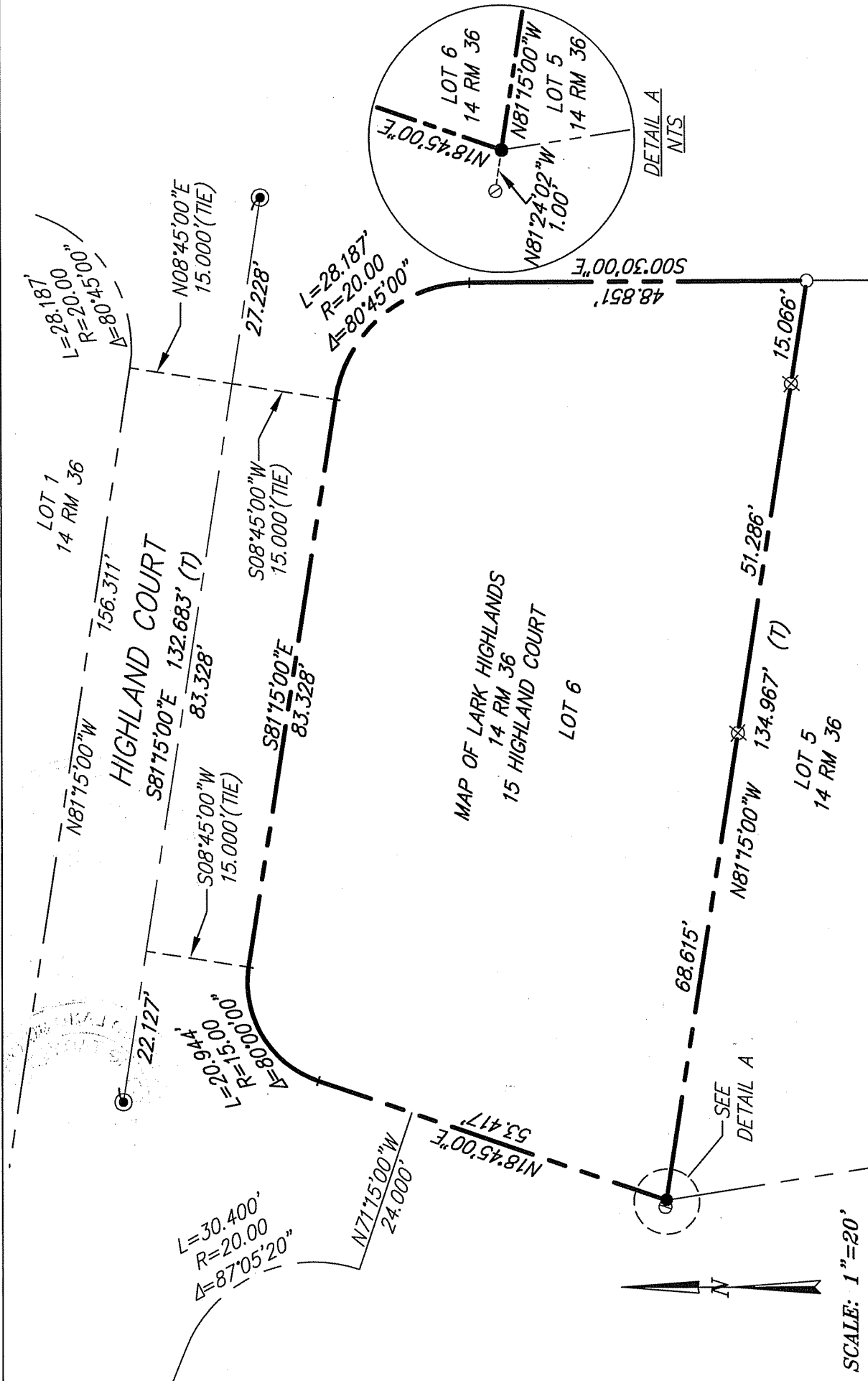


EXHIBIT "A"

ILS ASSOCIATES, INC.
 CIVIL ENGINEERING AND LAND SURVEYING



79 GALLI DRIVE, SUITE A NOVATO, CA 94949-5717 (415)883-9200 FAX (415)883-2763

NOTE:
 ALL DIMENSIONS AND BEARINGS
 SHOWN HEREON ARE PER 14 RM 36.

- LEGEND
- SET 3/4" IRON PIPE & YELLOW CAP "R.C.E. 18221"
 - ⊙ SET BRASS NAIL AND TAG "R.C.E. 18221"
 - ⊗ SET GINNEY - POINT ON PROPERTY LINE
 - FOUND CHISELED "X" IN PG&E BOX
 - ⊕ FOUND STANDARD STREET MONUMENT
 - (T) TOTAL

SCALE: 1"=20'

DATE: 12/23/2009
 FILE: 8432CR.dwg
 PAGE 2 OF 2

A.P.N. 021-071-32