

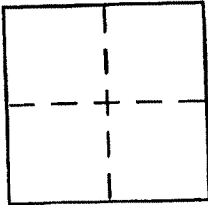
CORNER RECORD

Document Number APN 021-066-08

City of LARKSPUR

County of MARIN, California

Brief Legal Description PER RECORD OF SURVEY BOOK 15 OF SURVEYS, PAGE 31



CORNER TYPE

Government Corner Control
 Meander Property
 Rancho Other
 Date of Survey _____

COORDINATES (Optional)

N. _____
 E. _____
 Zone _____ NAD27 NAD83
 NAD83 Epoch _____
 Elev. _____
 Vert. Datum: NGVD29 NAVD88
 Meas. Units: Metric Imperial

Corner - Left as found Found and tagged Established Reestablished Rebuilt

Identification and type of corner found: Evidence used to identify or procedure used to establish or reestablish the corner:

SEE PAGE 2

A description of the physical condition of the monument as found and as set or reset:

SEE PAGE 2

SURVEYOR'S STATEMENT

This Corner Record was prepared by me or under my direction in conformance with the Land Surveyor's Act on AUGUST 20 2001

Signed _____ P.L.S or R.C.E. No. 6784

COUNTY SURVEYOR'S STATEMENT

This Corner Record was received AUGUST 23, 2001

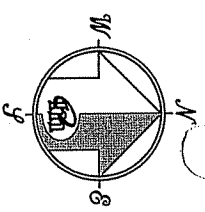
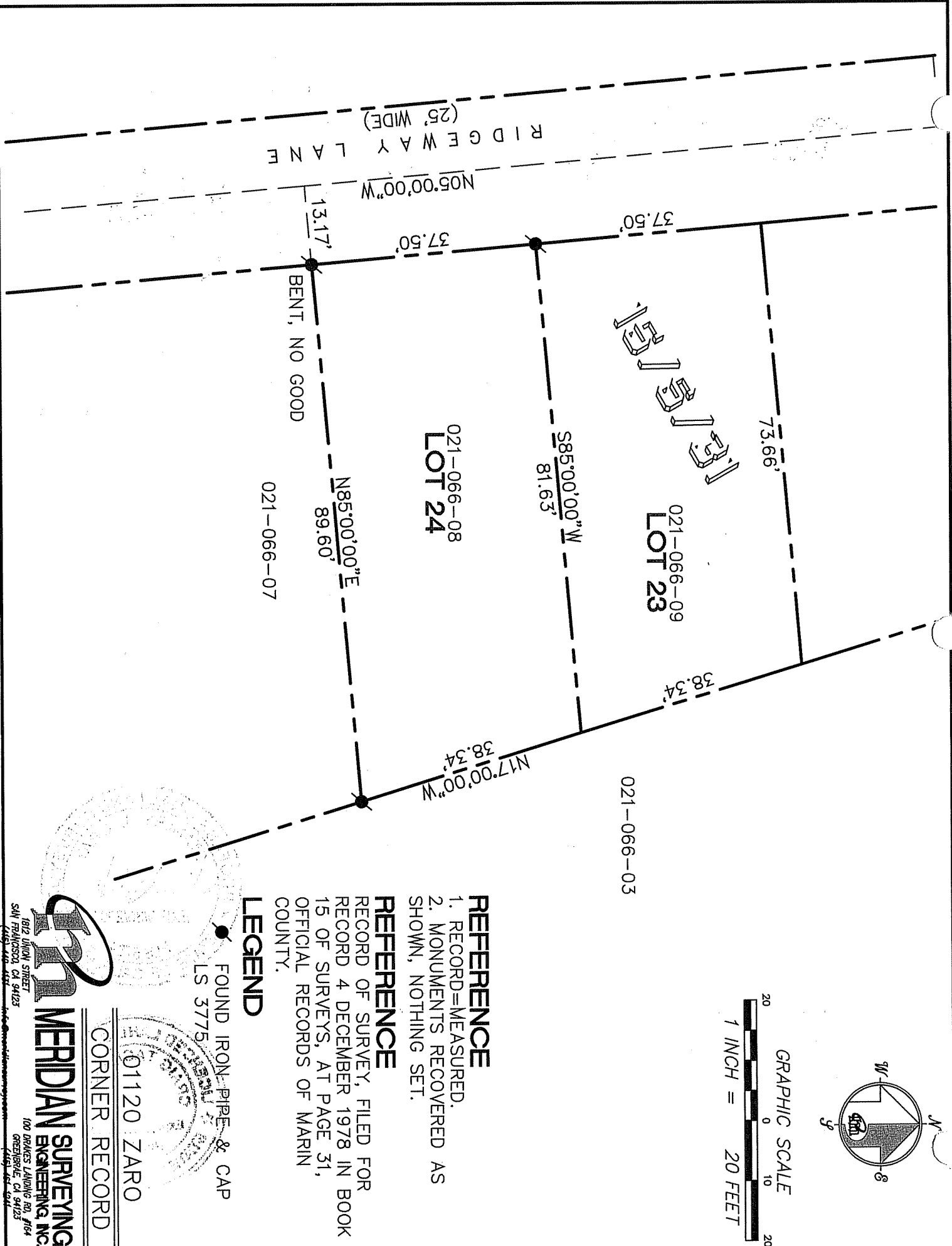
and examined and filed AUGUST 27, 2001

Signed [Signature] P.L.S or R.C.E. No. 7128

Title DEPUTY

County Surveyor's Comment _____





- REFERENCE**
1. RECORD=MEASURED.
 2. MONUMENTS RECOVERED AS SHOWN, NOTHING SET.

REFERENCE

RECORD OF SURVEY, FILED FOR RECORD 4 DECEMBER 1978 IN BOOK 15 OF SURVEYS, AT PAGE 31, OFFICIAL RECORDS OF MARIN COUNTY.

LEGEND

● FOUND IRON PIPE & CAP
 LS 3775

01120 ZARO
 CORNER RECORD

MERIDIAN SURVEYING
 ENGINEERING, INC.
 1812 UNION STREET
 SAN FRANCISCO, CA 94123
 (415) 431-4111
 100 DRAKES LANDING RD, #104
 GREENSBORO, CA 94231
 (415) 431-9411