

CORNER RECORD

Agency Index

CR23-019

Document Number

021-063-24b

City of LARKSPUR

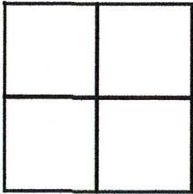
County of

MARIN

, California

Brief Legal Description

PTN. LOT 6, BLOCK 2, RACK 1, PULL 10, AS PER 2001 RS 210.



CORNER TYPE

Government Corner Control
 Meander Property
 Rancho Other

Date of Survey 11/10/22 & 12/22/22

COORDINATES (Optional)

N. _____ E. _____
 Elevation _____
 Units Metric U.S. Survey Foot
 Horizontal Datum _____
 Zone _____ Epoch Date _____
 Vertical Datum _____

Complies with Public Resources Code §§8801-8819
 Complies with Public Resources Code §§8890-8902

PLS Act Ref: 8765(d) 8771 8773 Other:

Corner/Monument: Left as found Established Rebuilt Pre-Construction
 Found and tagged Reestablished Referenced Post-Construction

Narrative of corner identified and monument as found, set, reset, replaced, or removed:

See sheet #2 for description (s):

SURVEYOR'S STATEMENT

This Corner Record was prepared by me or under my direction in conformance with the Professional Land Surveyors' Act on 2/27/2023

Signed [Signature] P.L.S. or R.C.E. No. 6649



COUNTY SURVEYOR'S STATEMENT

This Corner Record was received February 28, 2023

and examined and filed March 03, 2023

Signed T.W. Park P.L.S. [Redacted] No. 8176

Title County Surveyor

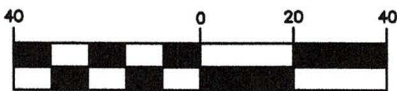


County Surveyor's Comment _____

All distances shown are in feet and decimals thereof.



GRAPHIC SCALE



(IN FEET)

MILLARD ROAD

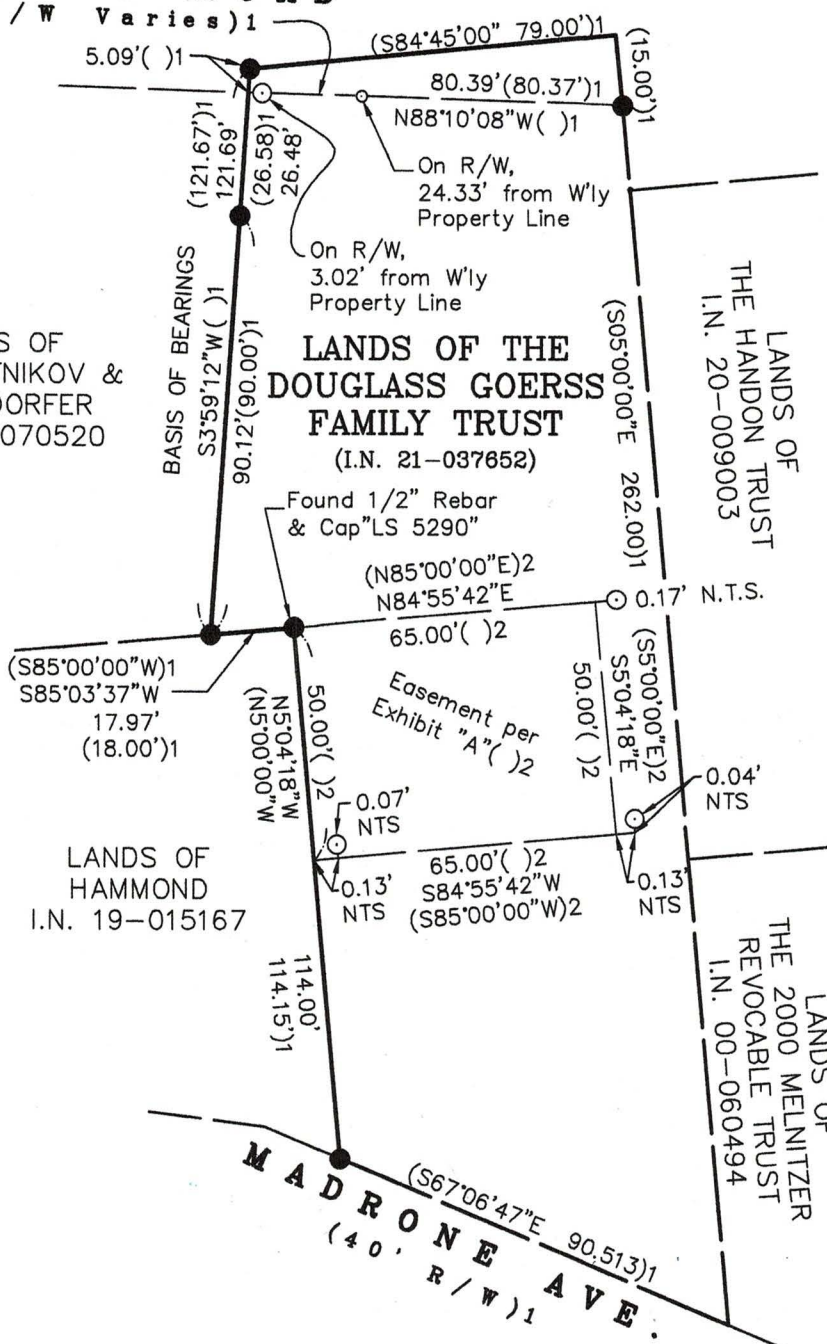
(R / W Varies) 1

LANDS OF
GOLUBJATNIKOV &
LIEBENDORFER
I.N. 09-070520

LANDS OF THE
DOUGLASS GOERSS
FAMILY TRUST
(I.N. 21-037652)

LANDS OF
THE HANSON TRUST
I.N. 20-009003

LANDS OF
THE 2000 MELNITZER
REVOCABLE TRUST
I.N. 00-060494



NOTE: This corner record supersedes and corrects the corner record filed as document number 021-063-24 on February 2, 2023.

LEGEND

- Found 3/4" Iron Pipe & Plastic Plug, Stamped "LS 6649"()1, (U.N.O.)
- Set 8" MagHub Spike & 1 1/2" Brass Washer, Stamped "LA STEVENS PLS 6649"
- ⊙ Set 5/8" Rebar & 1 1/2" Punched Aluminum Cap, Stamped "LA STEVENS PLS 6649"

NTS Not to Scale

UNO Unless Noted Otherwise

()1 2001 RS 210

()2 I.N. 00-035942



**CORNER RECORD
LANDS OF
THE DOUGLASS GOERSS
FAMILY TRUST**

(N'y & W'y Lines of I.N. 21-037652)
CITY OF LARKSPUR

MARIN COUNTY CALIFORNIA
SCALE: 1" = 40' FEBRUARY 27, 2023

L.A. Stevens & Associates, Inc.

Professional Land Surveyors * (415) 382-7713
7 Commercial Blvd., Suite 1 * Novato, CA 94949

Job # 222249

Lawrence A. Stevens, PLS 6649

Copyright © Lawrence A. Stevens 2023