

**CORNER RECORD**

City of LARKSPUR

Brief Legal Description AP# 021-043-29

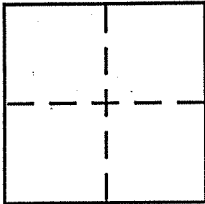
Document Number

AP # 021-043-29  
3546 OR 346

County of

MARIN, California

R.O.W. 16-PM-55



**CORNER TYPE**

Government Corner  Control   
Meander  Property   
Rancho  Other   
Date of Survey 11-13-03

**COORDINATES (Optional)**

N. \_\_\_\_\_  
E. \_\_\_\_\_  
Zone \_\_\_\_\_ NAD27  NAD83   
NAD83 Epoch \_\_\_\_\_  
Elev. \_\_\_\_\_  
Vert. Datum: NGVD29  NAVD88   
Meas. Units: Metric  Imperial

Corner - Left as found  Found and tagged  Established  Reestablished  Rebuilt

Identification and type of corner found: Evidence used to identify or procedure used to establish or reestablish the corner:

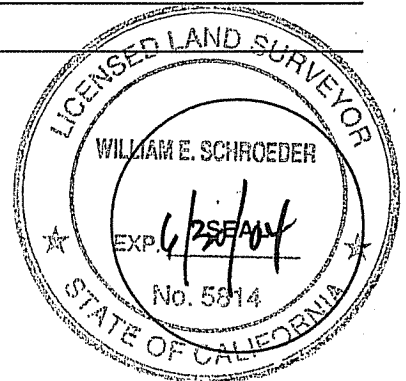
AS SHOWN ON REVERSE

A description of the physical condition of the monument as found and as set or reset:

**SURVEYOR'S STATEMENT**

This Corner Record was prepared by me or under my direction in conformance with the Land Surveyor's Act on 11-27-03

Signed William Schroeder P.L.S or R.C.E. No. 5814



**COUNTY SURVEYOR'S STATEMENT**

This Corner Record was received DECEMBER 8, 2003

and examined and filed JANUARY 13, 2004

Signed \_\_\_\_\_ P.L.S or R.C.E. No. 7128

Title COUNTY SURVEYOR

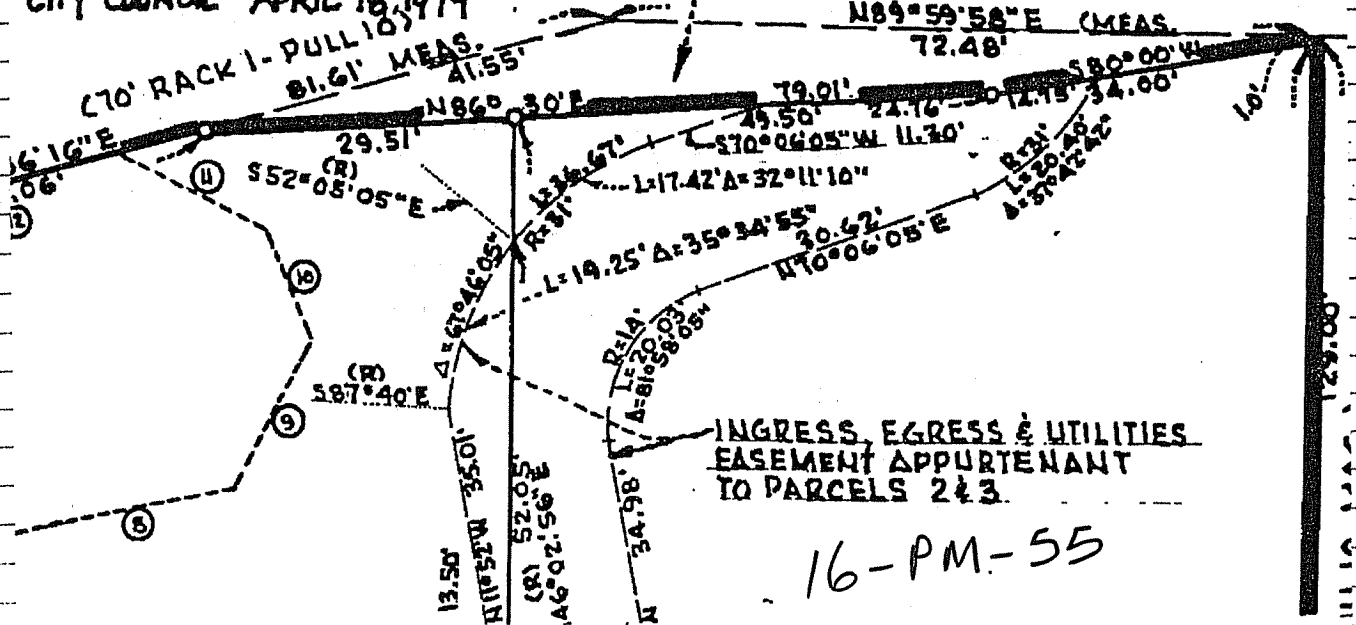


County Surveyor's Comment \_\_\_\_\_

OFFER OF DEDICATION TO THE  
CITY OF LARKSPUR  
3546 O.R. 346  
OFFER REJECTED BY MOTION OF  
CITY COUNCIL APRIL 18, 1979

**AVE.**

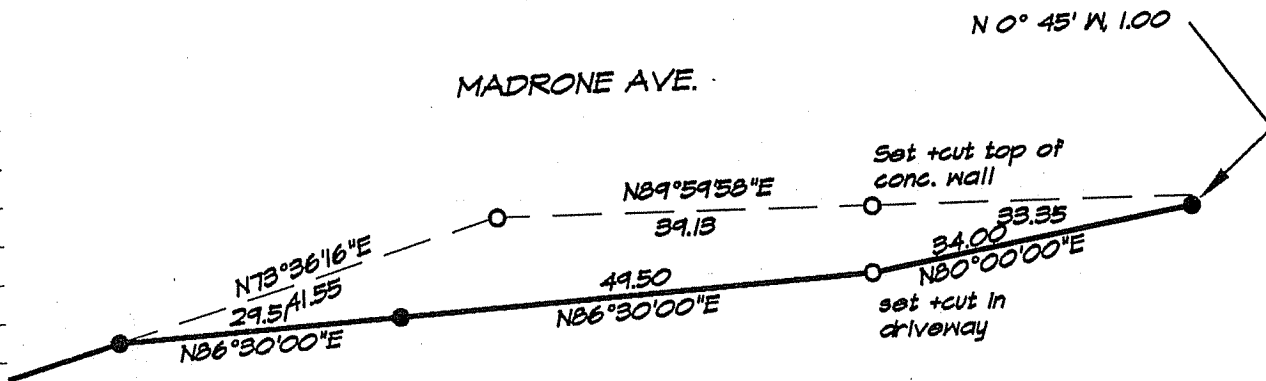
(75' RACK 1 - PULL 10)



INGRESS, EGRESS & UTILITIES  
EASEMENT APPURTENANT  
TO PARCELS 2 & 3.

16-PM-55

MADRONE AVE.



- = set 3/4" Iron Pipe w/ cap "LS 5814"
- = found 3/4" Iron Pipe w/cap "LS 3775" per 16 PM 55