

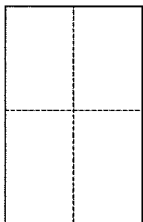
CORNER RECORD

Document Number 021-032-07

City of Larkspur

County of Marin, California

Brief Legal Description APN 021-032-07, Being a Portion of lot 14, Block 3, "Glen Addition", Rack 1, Pull 10, M.C.R.



CORNER TYPE

Government Corner Control
Meaneder Property
Rancho Other
Date of Survey _____

COORDINATES (Optional)

N. _____
E. _____
Zone _____ NAD27 NAD83
NAD83 Epoch _____
Elev. _____
Vert. Datum: NGVD29 NAVD88
Meas. Units: Metric Imperial

Corner - Left as found Found and tagged Established Reestablished Rebuilt

Identification and type of corner found: Evidence used to identify or procedure used to establish or reestablish the corner:
Found Lead Plug and Brass Tag to be in record position per Record of Survey
filed in Book 23 of Surveys, at page 66, Marin County Records.

A description of the physical condition of the monument as found and as set or reset:
Set (1) Brass Tag (LS7237) and (4) 1/2" Iron Pipes tagged (LS7237)

SURVEYOR'S STATEMENT

This Corner Record was prepared by me or under my direction in conformance with
the Land Surveyor's Act on JAN 5, 2014

Signed Michael E. Ford (P.L.S) or R.C.E. No. 7237



COUNTY SURVEYOR'S STATEMENT

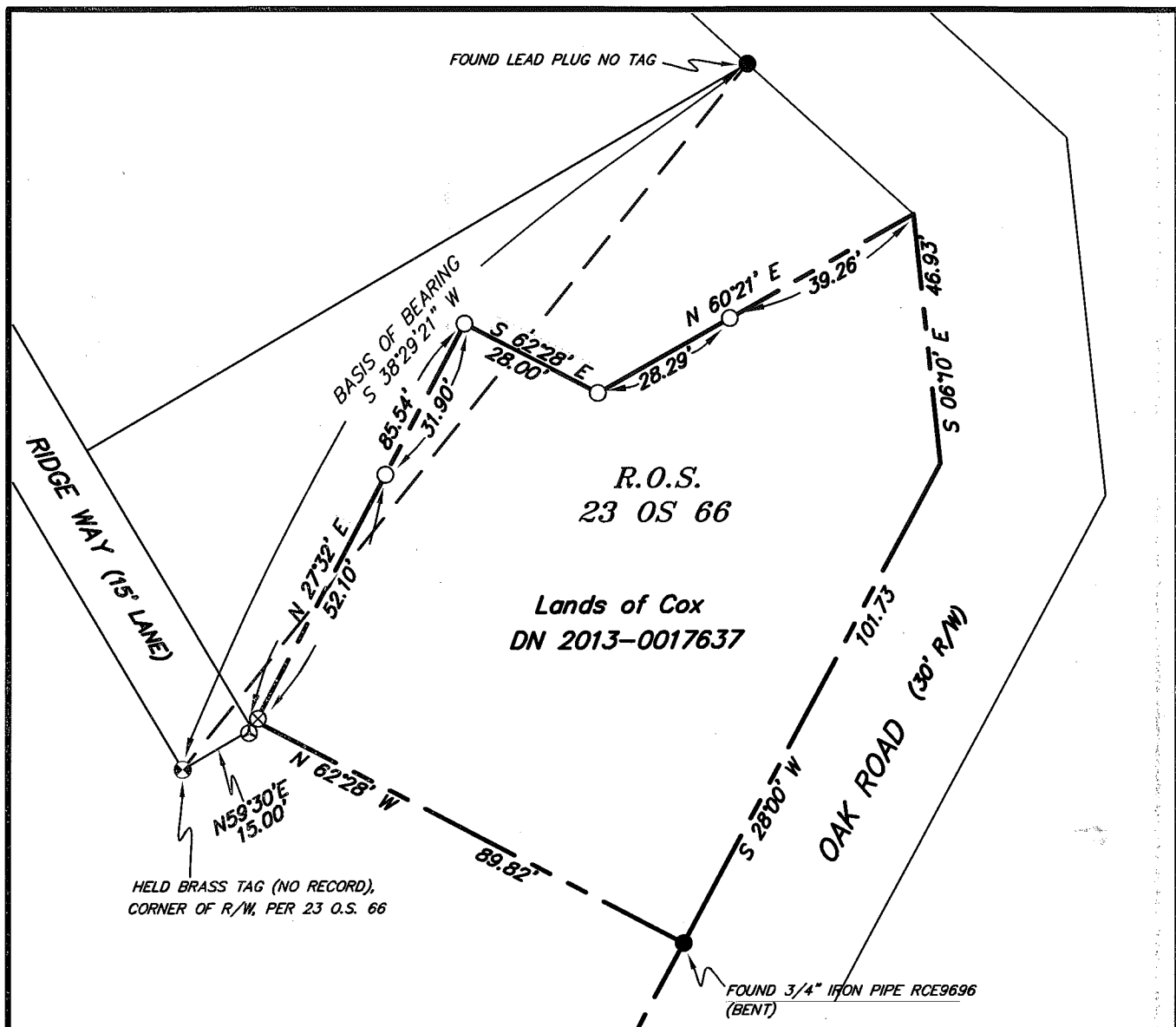
This Corner Record was received JANUARY 16, 2015
and examined and filed MARCH 19, 2015

Signed Richard G. Simonitch P.L.S. or R.C.E. No. 7821

Title Deputy



County Surveyor's Comment



HELD BRASS TAG (NO RECORD),
CORNER OF R/W, PER 23 O.S. 66

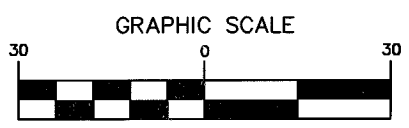
FOUND 3/4" IRON PIPE RCE9696
(BENT)

LEGEND

- SET 1/2" IRON PIPE LS7237
- ⊗ SET BRASS TAG & RIVET LS7237
- FOUND AS NOTED
- ⊕ FND BRASS TAG RCE 12094 (NO RECORD)
- ⊙ FND 90D NAIL

BASIS OF BEARINGS

S 38°29'21"W BETWEEN FOUND BRASS TAG RCE12094
IN DRIVEWAY AND LEAD PLUG NT PER RECORD OF
SURVEY FILED IN BOOK 23 OF SURVEYS, AT PAGE 66,
M.C.R.



(IN FEET)
1 inch = 30 ft.



2300 bethards drive, suite J
santa rosa, california 95405
p 707.542.8513 - f 707.542.1825
www.michaelfordinc.com